

1947-1967

TWENTIETH ANNIVERSARY
YEARBOOK
and **ROSTER**



The Eagle Scout Association

ST. LOUIS AREA COUNCIL • BOY SCOUTS OF AMERICA

EAGLE SCOUT

A fond mother watches her boy where he stands
 Apart from his comrades tonight;
As they place on his camp-battered tunic a badge,
 An Eagle, the emblem of right.
It seems just a few short months have passed
 Since he joined with the youngster next door;
How proud he was then of his Tenderfoot pin
 As he told her the message it bore.
But the years have gone as he struggled along
 To learn what the Scout Law's about;
He practiced them daily, the Oath and the Law
 Until now, He's an Eagle Scout.
You may smile in your worldly old wisdom at this
 And say, "Why, it's only a pin";
But I tell you no honors he'll gain as a man
 Will mean just as much to him.
The Red, White and Blue of the ribbon you see
 Are the symbols of honor and truth;
He has learned how to value these fine attributes
 In the glorious days of youth.
And the outflinging wings of the Eagle that rests
 On the breast of this knight of Today
Are the things which will lift him above petty deeds
 And guide him along the right way.
Yes, it's only a pin – just an Eagle Scout Badge,
 But the heart that's beneath it beats true
And will throb to the last for the things which are good,
 A lesson for me – and for you.

– *Author Unknown*

TWENTIETH ANNIVERSARY ROSTER

1947 - 1967

EAGLE SCOUT ASSOCIATION

OF ST. LOUIS

THE EAGLE SCOUT ASSOCIATION EXTENDS
ITS APPRECIATION TO

Robert Siegel
St. Louis Area Council
Boy Scouts of America

Robert Drummond
Reprotype Company

Irving Rader
Rader Studio

Aaron Lander
Lander Bookbinding Company

WHO GAVE GENEROUSLY OF THEIR
TIME IN PUBLISHING THIS BOOK

APRIL, 1967

C O N T E N T S

	<u>Page</u>
Scope of Scouting	2
Eagle Award	2
The Eagle Scout Association	3
Purpose	4
History - The First 20 Years.	4
Candid View of E.S.A.	19
Articles of Agreement	24
By-laws of the Eagle Scout Association.	25
Handbook for Directors, Officers and Committeemen . .	29
E.S.A. Officers and Directors - 1967	35
E.S.A. Past Presidents.	35
E.S.A. Roster for 1967.	36
E.S.A. Roster Supplement.	52

THE SCOPE OF SCOUTING

Scouting in St. Louis is big, but few, even those in Scouting, truly realize its scope. The St. Louis Area Council now serves over 48,000 Scouts -- 30% of the entire eligible boy population.

A staff of 38 professional Scout Leaders administrate this tremendous Scouting operation. They manage over \$3,500,000 worth of camping properties in addition to helping raise and administer an annual Council operating budget of over \$900,000.

Over 18,000 busy adults unselfishly devote their personal time and energy to serve St. Louis Area Scouting as volunteer Leaders. Included are over 1,650 unit leaders . . . Cubmasters, Scoutmasters, and Explorer Advisors. There are over 5,000 Den Mothers alone, plus thousands of Unit Committeemen, Commissioners, Merit Badge Counselors, Members-at-Large and others. Among the Members-at-Large are the former Eagle Scouts joined together into the Eagle Scout Association of St. Louis.

By 1970, the Council expects an increase to 57,000 Scouts and an ever expanding program of meaningful activities. The ESA, therefore, has a rapidly growing opportunity for service to Scouting and to the St. Louis Area Council.

THE EAGLE AWARD Scouting's Highest Honor

Although it is the goal of every Tenderfoot, fewer than two of each hundred boys who enter Scouting attain Eagle rank.

Winning the Eagle badge takes years of intensive effort - acquiring many new skills, broader knowledge, actually living the precepts for which Scouting stands.

The Eagle award is not had for the asking.

The requirements are high. As with all awards, the badge itself is just a symbol. Behind the badge are the priceless lessons learned on the way up. It's wearer, by his achievement, has uncovered the real meaning of Scouting. It follows him the rest of his life. HE IS A LEADER.

Each candidate for Eagle rank must successfully have advanced through the lower ranks of Scouting - first as a Tenderfoot, then Second Class, First Class, Star and Life Scout.

Each step up the ladder carries its own requirements which grow more difficult and advanced as the boy's knowledge of Scouting develops.

To attain Scouting's three top ranks, a Scout must qualify for certain Merit Badges, symbols of proficiency in specialized fields. Selected counselors, specialists in each subject, examine each candidate for Merit Badges. These examinations aim beyond mere technical compliance with the requirements, to test the Scout's knowledge of each subject, gained from his own application and study. Practical knowledge, not just book learning, is stressed. Special care is exercised to guard against too rapid advancement by the Scout, insuring thoroughness in his work.

An applicant for the rank of Eagle Scout must appear in person before a Board of Review and satisfy this Board that he has successfully met these requirements:

1. He has put into practice in his daily life the spirit of the Scout Oath and Law, the Motto "Be Prepared", and the Daily Good Turn.
2. He has demonstrate leadership in Scouting as a Life Scout during a period of at least six months; served his home, school, church and community; taken care of things that belonged to him and respected the property of others.
3. He has qualified for a total of at least twenty-one Merit Badges to include six Badges selected from required groups plus Camping, Cooking, Swimming, Life Saving, Nature, Personal Fitness, Public Health, Safety, Firemanship, First Aid Merit Badges, and five other Badges of his own selection.

Difficult as the Eagle goal may seem to the beginner, it is a challenge well worth a boy's best efforts.

Receiving the Eagle Award is one of boyhood's greatest thrills.

THE EAGLE SCOUT ASSOCIATION

ESA is an alumni group, but not in the usual sense of college, fraternity or veteran types. It is also a community activity, but not the usual kind devoted to raising funds for a cause. ESAers are "grown up Eagles" that still maintain a lively interest in Scouting and who have pleasantly discovered each other to be usually interesting and worthwhile social friends -- a unique cross section.

Perhaps because ESAers shared a common moving boyhood experience they have a feeling of duty which they demonstrate in their voluntary participation in Council activities. Each of the top six Council committees are chaired by or contain an ESA member. And the inspection of the ESA roster indicates the impressive amount of leadership and participation ESAers provide local Scouting at all levels.

But direct activity in Scouting is not a purpose of the ESA. New members are not "called upon" to serve. ESA adult Scouting activity is on a voluntary individual basis just as the achievement of the Eagle rank was a voluntary and individual thing. To the ESAer adult Scouting is an "affair of the heart" and not a professionally organized and planned group activity. Possibly because of this individual appeal the ESAer finds it a pleasure to work toward the ESA purpose.

ESAers are predominantly middle aged (hence the title "Bald Eagles") who are active and busy men. Mostly family men, their vocations run the gamut from advertising men, architects, artists, and attorneys, through carpenters, electricians, policemen, professors, professional Scouters and professional men, to researchers and writers...including almost every type of gainful activity in the area.

PURPOSE

The Eagle Scout Association, a group of Eagle Scout Alumni, is organized to 'Give back to Scouting something we got out of it' by assisting the Boy Scouts of America in the promotion and extension of Scouting in the St. Louis Area Council.

THE FIRST TWENTY YEARS OF ESA by G. Ben Ross

A prominent fashion expert observed that the new longer dresses make "women look long, lean and restricted." People were paying dealers as much as \$800 over list for new cars made secondhand by being driven around the block. Big Steel boosted prices from \$5 to \$8 per ton. But the big topic of conversation was the excessive heat. The Brooklyn Dodgers had just swept a 3-game series with the Cards to jump out in front by 7 games over St. Louis. Our Brownies, meanwhile, reposed deep in the American League celler.

Also in the day's news: the refugees aboard the good ship EXODUS and word of the first steps taken to outlaw cow slaughter in India. The MARCH OF TIME was still going strong in the flickers and the hottest radio programs were Raleigh's "People Are Funny" and the quiz show called "Break the Bank". (T.V.? -- What's that?). Greece was invaded. The war began between the Dutch and the Javanese in Indonesia. President Truman vetoed a tax reduction bill, and -- wouldn't you know it! -- people were complaining about the high price of things.

Thusly is the world and local scene set, back in the summer of 1947, for the first visible fulfillment of a grand idea in Scouting. Of this genesis, long-time professional Scouter, Carl Laemmli, writes: "The Eagle Scout Association idea had been discussed off and on and plans were finally made to effect some type of organization. Our Council President at the time, Col. Joseph E. Vollmar, was keenly interested and gave vigorous leadership to the organizational plans."

A careful search of the records dating back to the early 1920s revealed the names of over 2000 Eagle Scouts who had received their awards in the St. Louis Area Council. Three score and ten of these mature Eagles still living in the metropolitan area were invited to a dinner meeting at the Racquet Club. And so it came to pass, on that momentous evening of July 25, 1947, that Col. Vollmar, C. H. Poindexter, Council Treasurer, Jack Keith, Scout Executive, Leroy Lane, Assistant, and some 29 interested adult Eagles laid the preliminary plans for the formation of the Eagle Scout Association. A steering committee of ten was selected to meet and formulate plans for the bringing together of all the available adult Eagle Scouts living in the St. Louis area.

Subsequently, on August 11, the steering committee met at a luncheon meeting held at the Missouri Athletic Club. Under the chairmanship of Albert E. "Mike" Cunliff, further plans and arrangements were made. Another important meeting of the "Eagle Scout Club" (as it was first designated), took place at Garavelli's Restaurant the evening of September 23. Our steering committee has now grown to encompass the 19 Eagles present.

Several smaller meetings followed of the various sub-committees. Then the big date of official organization arrived: April 28, 1948, in the auditorium of the Law School at Washington University. The assembled Eagles -- charter members all -- elected Chairman Mike Cunliff as the first president of their fledgling group, henceforth to be known as the Eagle Scout Association. We were off and running!

It is interesting to note some of the early aspects. Attorney (but not yet a Congressman) Thomas B. Curtis, had made the first draft of the constitution and bylaws of the Association. Direction was still provided by the steering committee. It was determined that the number of persons on this committee would be equal to $1\frac{1}{2}$ times the number of districts within the Council. One member represented each district and the remainder of the Committee was elected to serve at large. At that time there were 17 districts in the St. Louis Council.

Now as the twentieth anniversary draws near, ESA may be excused for indulging in a bit of prideful reminiscing. From the very beginning the Association activities have been directed to two major channels of service: group participation and individual actions.

Through the years there have been special ESA projects as well as regular adult Scouter activities. As might be expected, much attention has been devoted toward encouraging boys to join the movement and then strive mightily toward the attainment of Scouting's highest rank. This endeavor of the Association has included well-established programs, such as Eagle Recognition Day, and a continuous schedule of advancement encouragement, with special emphasis on swimming skills, the merit badge program and eventual Eagle examinations. And of course, since its inception, ESA has regularly participated in Council functions such as the Scout Circus, the Scout Exposition, camp promotion and Friends of Scouting campaigns.

For the individual member the facets of Scouting service have been many and varied. In a sincere attempt to "give back to Scouting something we got out

of it," the Eagle Scout alumnus has served and is serving unselfishly and unstintingly in numerous and varied capacities. Within the Association membership there are Scoutmasters, Cubmasters, Explorer Advisors, Commissioners, District Executives. There are Unit Committeemen, Merit Badge Counselors, members of the Council's Executive Board as well as members of other Council and District Committees and members-at-large. Many otherwise busy businessmen ESAers apparently find the time and the inclination to serve in several capacities. Such is the hold that Scouting exerts! In 1967, questionnaires completed by ESA members indicated their present day participation in Scouting activities is as follows:

Total members surveyed.	191
Total members active in Scouting.	115 (60%)
Number of members active in more than one Scouting activity.	33
Members of either Eagle Board of Review, St. Louis Council, Special Council Committees.	29
Troop, Pack or Post Committeemen.	40
Merit Badge Counselors.	33
District Workers.	22
Unit or Asst. Unit Leaders.	29

From whence comes all this motivation? Is it entirely altruistic? The typical active ESAer would be less than honest if he didn't own up to a genuine warm feeling of camaraderie. In addition to an understandable pride in being able to render useful and necessary service to boyhood, the ESAer has discovered that fraternization with other Eagle alums of kindred backgrounds and experiences has, quite frankly, been fun!

Returning to our chronological discourse, an event of great and historical importance to ESA was the organization's first family outing at Camp Irondale in September of 1948. By the attendance standards of later years, this initial camping togetherness was numerically on the skimpy side. But the enthusiasm was certainly there and fun and fellowship ran rampant. True it was only a two-day affair and Labor Day itself wasn't even involved in this earliest outing. But there was no doubt, however, in the minds of those present that Irondale 1948 marked the beginning of a long and joyous tradition.

1949 was notable as the first really full year of ESA activity. In fact, there was quite an array of firsts. Making its appearance with minor fanfare was the first of the annual Rosters -- this one carrying 209 names. The late Art Werder had become new President of the group. The first of several successful "Bald Eagle Balls" took place. This opening affair occurred in March at Valley Mount Ranch. 75 celebrants were present. In April of '49 the Eagle Scout Association participated for the first time in the Boy Scout Circus. Officially we were designated as the Reception Committee, but unofficially we mostly searched for lost kids! We did, however, hold a brief but impressive Eagle investiture ceremony at each performance. Later in the same month the first of a number of general meetings was held at Joe Belvedere's eatery. An interesting note was the \$1.75 price tag on the complete charcoal

steak dinner offered. Still another first was the picnic held in June at O'Connell's Shack.

One of the first official projects to aid the St. Louis Council was the adoption by ESA members of a plan to serve as advisors to individual Life Scouts in an effort to guide and inspire them over the hurdles toward their Eagle awards.

The second annual Irondale Weekend, September 17 and 18, 1949 rolled around and was embraced with considerable enthusiasm, particularly by the spouses, who had begun to realize that here was a brief respite from KP duty.

By now it was 1950 and Tom Connelly was reigning as President. The question of the moment was: "What's in store for the Eagle Scout Association?" Serious efforts were being made to take stock of our short existence and make plans for the future. Social programs had been immediately popular. Ours had certainly become a compatible group who looked forward toward getting together, rehashing Scouting experiences and otherwise enjoying ourselves.

Among our varied efforts to aid Scouting, the advancement programs we had undertaken, though thoroughly organized, appeared to bog down a bit. Probably it was too ambitious an undertaking in view of the newness of the organization. Strangely enough, nevertheless, Eagle awards in St. Louis during 1949 had jumped 100%! Eventually the consensus seemed to point toward a continuation of the social gatherings, with emphasis on keeping them varied. In our programs for Scouting, aside from Council-wide events like the Circus and the Exposition, we were determined to keep our projects practical and workable: Act as the Council's flying squadron to handle projects that none of its existing volunteer groups had the time or the qualifications to take on. And thus a pattern was set for the early years of ESA.

An interesting note about the 3rd Irondale Weekend was the fact that 1950 marked the first inclusion of Labor Day in the scheduling. Another pattern commencement was the idea utilizing Irondale and the large turn-out of Bald Eagles for the annual meeting and the election of officers. Precedents such as these were destined for considerable longevity. Stuart Senniger became the new prexy.

The ESA Roster for 1950-1951, with an accompanying booklet of explanation, had a wide and ambitious distribution. Copies were mailed to all readers of the Council's DUFFEL BAG, as well as to Friends of Scouting. The dance (with buffet supper) at Candlelight House in November of 1950 was probably one of the most successful social events, and served to set a number of precedents. Unfortunately, the cost of \$1.00 per person was not one of them!

An innovation was tried in March, 1951, in connection with the 21st Boy Scout Circus. Keeping several thousand Cubs, Scouts and Leaders entertained, except for the few moments they were actually on the Arena floor, was no small order. But ESA tackled the job with the promotion, planning and direction of a variety show each of the three nights. The show featured some of the Circus acts and headliners from the entertainment world. So successful was this pioneering in a new field, that ESA has been called upon each succeeding Circus to take charge of the variety show.

Another "first" was the establishment in July of '51 of the first adult Eagle Scout organization patterned after our own group. The new ESA was formed in the Golden Empire Council in Sacramento, California.

At the 4th annual Irondale Weekend, in 1951, ESA drew up a resolution recommending that the St. Louis Council adopt certain minimum standards relative to age and leadership qualifications of aspiring Eagles-to-be. This resolution subsequently was adopted without modification by the Council and has been in effect in this area ever since. Bob Phemister became the fifth President of ESA. The first mutterings were heard about a possible tower, but it was generally conceded that the cost would be prohibitive. It was noted in a questionnaire sent out to the membership that the principal reason some of the Baldies failed to attend the 1951 Weekend was babies -- new or on the way. The activity most appreciated was swimming. (It was a torrid weekend that year!)

Early in 1952 the ESA governing board decided that a tower would be too great an undertaking. An alternate decision was made to carve a totem pole which would be erected at the entrance to the Beaumont Reservation. A call was sent out for all chiselers.

The Swimming Committee, formed the preceeding year, was beginning to come into prominence. Its mission had been to assist the Council in providing opportunity for Scouts to pass tests and merit badges in swimming and life-saving. Weekly classes were held at the Armory. Qualified Red Cross instructors from the Meramec River Patrol provided the professional know-how, whil ESA members were being used as much-needed assistants. The Council felt that these Armory water sessions were important in relieving an impediment to Scouting Advancement.

At the annual meeting during the 5th Irondale Weekend, Bill Guthrie was elected new President.

The Boy Scout Exposition of November, 1952, was another large success. ESA was justifiably proud of its booth, the theme of which was a scale model depicting parts of the new Beaumont Reservation. Both the booth and the Baldies who manned it did an effective job in selling the general public on the Beaumont project and in gaining wide-spread public sympathy for the fund drive to take place after the first of the year. In addition to the primary objective, we devoted headquarters space for distinguished guests and also were able to add a number of additional adult Eagles to our membership.

Well, the big drive for capital funds (almost \$700,000 worth) for the new Beaumont Reservation was kicked off in spectacular style in April of 1953. There was a glittering parade (to which ESA contributed an appropriate float) climaxed by a gigantic rally at Kiel Auditorium to start the campaign. It is to be noted, with considerable pride, that our own Eric Smith was the architect for the Beaumont development.

Another "kickoff" meeting had occurred only a month previous. It signaled the beginning of the ESA Fire Tower Project. A little later Carl Laemmler wrote: "The Eagle Scout Association is beginning to be recognized throughout

the nation and in Scouting circles. I have just returned from a regional meeting in Kansas City where I explained the ESA to interested folks from some 36 Councils. This should be ample proof that the organization is coming of age and that the completion of the Tower project will be real proof of that growth."

By May the necessary \$3000 goal had been over-subscribed. 103 Eagles had contributed \$3691, and plans were laid to erect the Tower, to be known as the "Eagles' Nest", as soon as possible.

Meanwhile, back at the ranch -- Irondale, that is -- the 6th Annual Weekend was the scene of another enthusiastic gathering. An updated set of By-Laws modified by the Board of Directors was approved by the membership and officially adopted. The object of this move was to strengthen and provide a more efficient and responsible governing action. Among other things, the new By-Laws provided for a Board consisting of 18 persons, with 6 retiring each year and 6 new members elected to fill their vacancies. Al Gruer became the 7th President of ESA. That year also marked the inauguration of a new policy; the election of three vice-presidents of equal rank and status. Each coordinates the activities of various important committees assigned by the President.

This is the chronicle on the birth of the Tower: materials delivered October 3, 1953; erected on October 10 by Ben Hur Construction Co. iron workers, who donated their services, with assistance from volunteer ESA members. The 60-foot steel fire observation tower was strategically located at the highest point on Beaumont Reservation. It was planned to have the structure manned -- day and night -- during the fire season by Eagle Scouts (mostly of the boy variety) only. Equipped with high-powered binoculars, direction-finders, and two-way radio, the "Eagles' Nest" would scan the area for miles around -- a vigilant guardian.

To avoid possible liabilities and to stabilize the Association, the incorporation of ESA was consummated on November 2, 1953, with the Great Seal of the State of Missouri.

A month later another Boy Scout Circus rolled around and again ESA undertook the popular Variety Show. This time the entertainment was staged in a tent erected outside the Arena main building.

Never in the history of the St. Louis Council had there been so many new Eagles appearing on the scene. Thus, by 1954, we find our ESA advancement committee doing a lot of talking about Eagle Scouting at various Courts of Honor.

In the Spring the Council officially called upon ESA for the first time to lend assistance in the solicitation for the "Friends of Scouting" campaign. The targets assigned to ESA consisted of a number of business people who had evidenced unusual interest in the Boy Scout program by giving generously to the Beaumont development. Enough Baldies responded to the call, gave their time unselfishly, and the job was done.

The long-awaited dedication of the "Eagles' Nest" finally became a reality on a Saturday afternoon in August, 1954. The actual date was the 14th and more than 300 people attended the impressive ceremonies. Many of the Baldies present sported for the first time the smart, new ESA emblems on overseas caps. This constituted the Association's "official uniform". Unofficially, the caps offered much needed covering for the "skinheads"! Our 60-foot Tower became an official fire control point for the Meramec District of the Missouri Conservation Commission. From the lofty "Nest" the field of vision extended 16 miles in all directions.

At the annual meeting held during Irondale Weekend, the first suggestions were offered about the advisability of having some sort of a yearly Recognition Day at the Eagles' Nest for the current crop of new Eagles. Records of the meeting indicate that Jerry Steiner, Jr., is the first son of an ESA member to become an Eagle Scout. The new President of ESA -- 8th in the succession -- was Jack Grossman. This was the largest Weekend yet -- about 180 persons -- and all the buildings were filled to overflowing. It was decided to utilize tents extensively the following year to take care of the surplus humanity, and also to try to encourage more families to come down on Friday afternoon or evening. More and more dogs had been accompanying their masters to Irondale, with attending problems. For the future safety and convenience of all concerned, it was proclaimed: No more canines!

Later in the month the ESA Board of Directors changed the By-Laws to include on the Board the retired Presidents for the previous six years. Such a situation resulted in the organization retaining the valuable experience of the retiring President.

In November of 1955 the first of several very successful dinner dances was held at the Officers Club of the Naval Air Station, Lambert Field. Some 53 couples "had a ball". If you appreciate statistics and like to reminisce, the cost (steak or lobster) was \$5.95 per couple.

Early in 1955 the Advancement Committee of the St. Louis Council took special pains to offer kudos to the ESA Swimming Program. As of that date, as a direct result of the program, nearly 1000 boys had passed their 1st Class swimming requirements, as well as a good many others who had managed to earn Swimming and Life-Saving merit badges.

The 1955 Friends of Scouting campaign was the first in which the ESA membership participated as a group to aid the Council in its annual solicitation. The Association's goal was finally reached, but the overall results were something less than spectacular.

One of the more novel of our long string of social events occurred in April when ESAers and their ladies trooped down to the Showboat on the Mississippi for an exciting evening performance and followed that up with a buffet supper at the Chariton Restaurant.

At mid-year 1955 the local Council was honored with the opportunity of playing host to the Annual Meeting of the National Council, BSA, which was

held at Kiel Auditorium on May 20 and 21. A number of Baldies attended and participated in the various meetings and exhibits.

Probably the most important event of the entire year was the birth of Eagles' Recognition Day. This initial gathering was the first in what was destined to be a long series of annual ceremonies sponsored by ESA. Honored were those Scouts and Explorers who had earned the Eagle rank during the past year. Festivities were set for Sunday, June 12, 1955, at Beaumont Reservation. The program of the afternoon featured open house in which such attractions as the new swimming pool, the Ranger Camp and, of course, our stately "Eagles' Nest" Fire Tower were inspected and admired by about 360 people. After dinner in the new John D. Wright Memorial Lodge, the actual recognition program took place. Featured speaker was Edwin Kalbfleish, Jr., ESA member and a survivor of the Bataan Death March. Then certificates were given to the 65 new Eagles present. This number represented about 40% of all the Eagle Scouts invited.

It was during our Board meeting of July 14th that the first murmurings were heard about the advisability of moving the two-year old Eagles' Nest to a more favorable location. Some of the members pointed out that the Tower undoubtedly was in the right place for fire protection, but in the wrong place for Eagle recognition purposes. The fact that the Tower couldn't be seen from the general camp area appeared to render its location unsatisfactory.

Each succeeding September the annual Weekends at Irondale have been growing bigger and better. To provide for the "bigger" category, 1955 marked the first year in which tents were pressed into service in order to supplement the cabin facilities. Also appearing was the "Handbook For Directors, Officers and Committeemen" -- a comprehensive summary of personnel duties, procedures and programs. Charlie Bland became the 9th President of the organization.

We were well into 1956 and in the written record of the 2nd Annual Eagles' Recognition Day it is noted that "the entire program was carried off with neat precision." Again Beaumont was the site and the weather favored by producing an ideal May day. It was pointed out, however, that attendance of ESA members was rather poor.

A report by the St. Louis Council was presented during our annual Irondale meeting. It brought a considerable swelling of pride among the membership to learn that Eagle Scout Associations patterned after ours are being considered all over the country. In fact, the National Council was using our Constitution and By-Laws as a basis for consideration.

Adopted as a project for the year was the providing of a completely equipped chuck wagon for St. Louis Council use in its rapidly expanding Explorer program. Adolph Peschke, fresh from a recent Ranger Ride, had emphasized the need for such a vehicle and was destined to guide its development in the months ahead. The annual election of officers produced a new President: Jerry Steiner.

As we arrived at the 3rd Annual Eagles' Recognition Day, again held at Beaumont in May of '56, information was made public that Associations fashioned after ours were now thriving in such major Councils as Los Angeles, New York, Chicago and Houston. As an added feature, ESA's chuck wagon, complete and equipped, was formally presented to the St. Louis Council.

A record turnout of Baldies and members of their families greeted the 10th Irondale Weekend. More than 200 persons made a genuine effort to enjoy themselves over the Labor Day period, and apparently all succeeded. Elected new President of ESA for '57-'58, and the 11th in the succession, was G. Ben Ross.

In the last meeting of that year, the Policy Committee recommended that ESA dues be increased to \$3.00 annually. Inflation seems to be everywhere!

Eagles' Recognition Day No. 4, of May, 1958, was destined to be the last of its kind. Our problem seemed to have been simply too much success. That year's affair at Beaumont Reservation, for example, drew a capacity crowd of nearly 400 people and was outstanding in every way. Future growth in size and importance was certainly anticipated. Therefore, plans were laid for the 1959 version to be held at a downtown hotel, with proper ceremonies taking place at a huge luncheon.

At the Irondale Weekend meeting in September, Gene Cole became the new President. There were a few more disheartening reports on vandalism at the Fire Tower. An innovation that year was the first Steak Fry for ESAers only. Saturday afternoon, November 1, marked the day when a bunch of the boys, 28 strong, assembled at the Ranger Camp, Beaumont Reservation, to whoop it up. On the agenda were long horseback rides for tough rumps and shorter rides for tender bottoms. Never before had anyone ever seen so many bowlegged Eagles! Mo-skeet, archery, horseshoes -- and of course, the tasty chow -- completed the program.

Meanwhile, ESA continued to fill its role late in each year with generous help and participation in either the Boy Scout Circus or the Exposition.

Carrying on a tradition of memorabilia, churned into noticeable motion previously by Al Gruer, the dinner-dance at the Lambert Field Naval Officers Club late in November marked the first public appearance of a fine set of scrap books depicting the history of ESA. It was whispered around that most of the credit should actually fall to the energetic spouse of Historian Jack Grossman.

The kickoff event for activities in 1959 was the big bowling party -- the first of this type of social affair for ESA -- in January at Crestwood Lanes. In many cases, lack of skill was conveniently covered up with extra bursts of enthusiasm.

Then the stage was set for the Association's ambitious undertaking in February. The subsequent festivities at luncheon in the Hotel Statler's spacious ballroom constituted a proper successor to the Eagles' Recognition Days formerly held at Beaumont, as the ESA combined with the Council in a

joint effort to honor new Eagles. This was truly a red letter day in the annals of ESA, properly keynoted by the Honorable James T. Blair, Governor of Missouri. This event highlighted Boy Scout Week, and it probably did more than anything in the history of ESA to underscore the importance of the organization. Nearly 600 Eagle Scouts, ESA members and prominent civic, business and professional leaders gathered to pay tribute to 154 Eagles who attained Scouting's highest advancement during 1958. In his address, Gov. Blair urged the Scouts to continue to work "at forming the habit of excellence in everything you undertake."

Plans for a brand new project were announced in March. It concerned the construction of a new Observation Tower at Irondale Reservation. Several reasons were advanced for the proposal. As many of us recall, the Irondale Tower had always been a source of great pleasure to the thousands of Scouts attending camp. Located as it was on the parade grounds, it was easily accessible and constantly in use. In the long history of Irondale there had actually been two timbered towers, the last one having been razed many years ago and never replaced. The new Tower, as the one at Beaumont, was to be known as the "Eagles' Nest", and so identified. This was a project which the Council's Camping Committee had long been anxious to undertake. Several organizations had indicated an interest in the project, but it was felt that the opportunity was a "natural" for ESA.

In the Spring of 1959 the most complete Roster and Handbook ever compiled for ESA made its appearance, and with justifiable acclaim.

Something different in the way of social events was tried on May 16. Beautiful weather cooperated in every respect as a few Baldies made a day of it sailing and picnicking at the BSA Sea Scout Base at Alton Lake.

Later in the year Orlie Wilkening was elected new President at the 12th Annual Irondale Weekend encampment. Along about the same time the new Scout Executive of the St. Louis Area Council turned out to be none other than our own Russ Hart, long-time Eagle Scout and a member of ESA from the beginning. He assumed his new duties on October 1, succeeding Jack Keith, who retired.

The Council's Advancement Committee requested ESA to provide Court of Honor demonstrators for future District Roundtable meetings, training sessions and the like. In view of the fact that one of the original purposes of ESA was to help Scouts advance, it was generally conceded that this could be a most worthy project for the group. The Secretary of ESA was to prepare Court of Honor Demonstrator Kits for use in this program, and participants were to swing into operation after January 1, 1960.

The ESA stag outing at the Ranger Camp on October 24 was enthusiastically attended again. That year the membership was able to take full advantage of the new rifle range.

The 1960 edition of the process of recognizing new Eagles took place at a luncheon February 8 in the Gold Room of the Hotel Sheraton-Jefferson. This project, officially termed "Eagle Scout Citizenship Day", was ESA's joint venture with the

Chamber of Commerce of Metropolitan St. Louis. James G. Conzelmann, the man of many talents and professions, was the principal speaker. The ceremony that year differed in that only one placque was presented to a new Eagle, instead of 200 individually, in the interests of time saving.

In regard to the worsening situation with our Eagles' Nest Tower, a request had been made for ESA either to move the Fire Tower to a more suitable location on Beaumont Reservation, or to give the Tower to the Missouri Conservation authorities. And so it was decided to inform the St. Louis Council that our Tower would be turned over to the Council to do with what they would. Goodbye!

Scout Executive Russ Hart appeared before our Board of Directors and made a personal appeal for ESA to become an official participant again in the annual Friends of Scouting drive for funds. Many valid reasons were presented. The Eagle Scout Association found itself in a most crucial position in the entire campaign because ESAers are "all products...the best products of Scouting". In the preceeding few years much doubt had been expressed that "if former Eagles aren't willing to help -- and they know better what Scouting is and does than anyone -- why should I (or we, or our group) help?" Significant of the true Scouting spirit of our Board, it was their unanimous decision to participate with a 100% understanding and support of the Friends of Scouting campaign. In this light ESA can be cast as a very important symbol for the campaign. Later it was reported that ESA had oversubscribed its \$1000 quota by more than \$200.

As the 1960 Irondale Weekend rolled around, and once again dimming ESA athletes strove mightily to match muscles and skills with a rising younger generation, it appeared that perhaps ground was being lost. First the Teenagers managed to shade the Baldies in a swimming race or two. Then the Teens' growing superiority in the hotly contested softball games was becoming more evident. But where there's life, there's hope! And ESA athletic fortunes in future years will probably fluctuate as younger Baldies join our forces and the old timers fade away. The business meeting uncovered some new discussions and planning. In one instance, a mail survey of Association members was authorized for the purpose of ascertaining if people would be willing to make provisions in their wills for the ESA Endowment Fund. Also, an amendment to the By-Laws was added to create the new office of Executive Vice-President. The value in having the new officer would be to improve the continuity of leadership in the organization and to undertake special assignments. Ed Bilhorn became the 14th President of ESA.

The launching of the S.O.L.E. (Searchers of Lost Eagles) campaign was the most important business discussed at the October, 1960, Ranger Camp meeting. An extensive list had been compiled of all Scouts and Explorers in the St. Louis Area Council who had received their Eagle badges since 1922. These 3000 names were eventually placed on I.B.M. cards and the "search" was begun. The theme of the ESA booth in the November Scout Exposition was the S.O.L.E. campaign. By the third night of the Exposition a goodly number of "lost Eagles" had been "found", and so indicated on the posted S.O.L.E. cards in the booth.

As the last of 1960 ebbed away, Eagle Scout Tom Curtis (also known far and wide as Congressman Curtis) received another honor in a long and distinguished public career when the GLOBE-DEMOCRAT presented him with the Man Of The Year Award.

A new policy affecting Eagle Scout Recognition Day (as it is now called) was instituted on February 19, 1961, when the site was moved to the spacious Scottish Rite Cathedral. The Golden Jubilee Class of Eagle Scouts, some 339 strong, received plaques before an audience of 1500. The principal speaker was Judson Jusell of Minneapolis, Executive for Region 8, which has headquarters in Kansas City, Mo. He replaced Joseph A. Brunton, Jr., of New Brunswick, N.J., on the program. Chief Scout Executive Brunton had to cancel his appearance at the last moment because of an airline strike and a snow storm. The outstanding success of this "Day" was to set the pattern for future Eagle Recognitions for years to come.

It was during an April, 1961, Board meeting that the welcome news was reported about the Irondale Tower finally having been erected. The untiring efforts of Ed Spinks in supervising the entire project were duly recognized and applauded.

In June, the first word came that the St. Louis Area Council had purchased additional acreage adjacent to Beaumont Reservation and that approval had been granted to acquire a huge tract of about 4000 acres for an entirely new and major camp development a few miles south of Farmington, Mo.

The highlight of the 14th Annual Irondale Weekend was the dedication of the Eagles' Nest (Irondale version). Amid appropriate ceremonies, the timbered, 3-tiered Fire Tower was formally presented to the Council. It was a great day! And not to be minimized was the election of a new President, Rom Smillie, the 15th in a distinguished lineage.

The principal ESA project for the coming year was to be our participation in the National Scouting's "Together" program. ESA was to be called on to provide fifty or more volunteers to work in teams. The purpose of the program was to encourage churches, schools and other institutions to sponsor Scouting units.

The advent of a new year brought with it Eagle Scout Recognition Day of 1962. Held again in February at the Scottish Rite Cathedral, it gave strong testimony to the appropriateness of the site and to the spirit behind the whole program. The new partnership of the Eagle Scout Association with the Council's Advancement Committee appeared to be an ideal arrangement. Zen Hansen, President of the Diamond T Motor Truck Co., and a member of the National BSA Council, delivered a stirring address. 344 new Eagle Scouts were accorded "recognition".

Along in May the first requests were made by the Council seeking the help of ESA in publicizing the new camp, S-F Ranch. It was recalled that ten years before the Association promoted similar publicity for Camp May at Beaumont Reservation. Plans were proposed to set up an extensive topographical display in the Scout Exposition, later on in the year, which would depict the entire camp layout.

It was also during 1962 that the Eagles' Nest at Beaumont came to an inglorious end. A stalwart team of "tower dismantlers" from ESA spent one Saturday in carefully (and almost lovingly) separating and otherwise disconnecting the Tower, piece by piece, and finally laying it to rest in a storage area. It is hoped that on some bright future day our Eagles' Nest will be re-erected in the main headquarters area of the new S-F Ranch. Here, certainly, it can be much more easily

supervised and maintained and will serve as an observation tower.

At the 15th Annual Irondale Weekend, in September, the Board elected Lou Heyman new President of the Association.

The Scout Exposition in November at the Arena featured a booth that was clearly ESA's most ambitious undertaking to date in an exhibit of this type. Numerous volunteers from the ranks of the Baldies brought forth the skill and manpower to erect a geodesic dome sheltering a model presentation of the new S-F Ranch. It "played" to rave audiences!

The year 1963 was only six days old when another contingent of new Eagles -- 410 strong -- received official recognition of Eagle Scout Day at the Scottish Rite Cathedral. Business and civic leader George H. Capps, himself an Eagle, delivered the main address and issued the challenge to the new class.

In the May Board meeting it was announced that 125 ESAers had pledged a total of \$16,719 to the S-F Camp Development Fund. The St. Louis Area Council was hopeful of raising \$1,250,000 in all.

At the Irondale Labor Day Weekend Doug Day was elevated into the Presidency. Membership gains during the past year of an even 100 new Bald Eagles had increased the total ESA complement to 318. Also reported was the gratifying news that the S-F Camp Development Fund had gone over the top.

The 1964 edition of Eagle Scout Recognition Day was observed, with the usual appropriate ceremonies, at Scottish Rite Cathedral again. This ideal site appears to be the gathering place for many such "Days" in the future. M. R. Chambers, President of International Shoe Co., spoke as the sponsor of the new class.

And later in the year the annual ESA family get-together over the Labor Day holiday was probably the "best yet". One new wrinkle was the snapping of separate color pictures of each family group in attendance, and making the photos a part of the Historian's permanent records. In a report of progress regarding S-F Ranch, Bald Eagle Eric Smith, who is the chief architect for the whole development, reported that the dam was finished, the lake was filling and that some of the buildings were already under construction. Harry Davis became the 18th President of ESA.

The Dean of the Washington University School of Law, Hiram H. Lesar, issued the challenge to the new class of Eagles on their Recognition Day, January 10, 1965.

In September, the Association, sojourning at Irondale during the proverbial Weekend, reached an "end of the trail" situation -- or at least a "crossroad". As the pace quickened in the development of S-F, preparations were made to observe a coup de grace, "for Camp Irondale which we all love so well" was to be discarded by the Council. Last chance, Baldies, to bask in those nostalgic memories of carefree boyhood! Therefore, gentle reader, it's not at all surprising to learn that there was perhaps a bit more verve and spirit displayed during the usual festivities of the long Weekend. Appetites appeared to be more ravenous, softball more daring, swimming more bold, campfire more hilarious (despite a wet Saturday night!), square dancing more energetic, bull sessions

more lingering ... we'll miss you, Irondale! Actually 67 families were represented in this swan song Weekend at the Council's oldest (and certainly the most nostalgic) camping ground. In this, the 18th consecutive annual Irondale encampment -- and the last -- Dickson Stauffer was elected President for the ensuing year, and the membership solemnly turned their thoughts toward 1966 and what may lie ahead.

There was certainly no question about the 1966 version of Eagle Scout Recognition Day. The usual impressive ceremonies in January at Scottish Rite Cathedral honored 408 Scouts and Explorers. Harry Shuford, President of the Federal Reserve Bank, hurled the "challenge" to the class of new Eagles.

In these more mature years of ESA, the trend in social affairs appeared to have shifted toward a scheduled dinner-dance in the Spring season. Some featured a Valentine motif, such as the successful celebration occurring February 19th at Dana's Inn America.

The advance publicity for the "Labor Day Weekend at Beaumont" emphatically promised a full schedule of fun-oriented activities. On the crowded agenda were found horseback riding, swimming, archery, mo-skeet, softball, volleyball, and horseshoes. Also scheduled: handicraft especially for the kids, guided nature tours, campfire programs, square dancing "outdoors under a full moon" -- and all this "only 30 minutes from the middle of the city"! And so it came to pass -- and even better and more pleasurable than anyone expected -- that the annual gathering of the Bald Eagles and their mates and assorted offspring took place at the huge Reservation's Camp May. This particular area nestles in a picturesque valley which had been a chosen camp ground even before "pale-faces" saw the West! Made available for the ESA families were plenty of accommodations afforded by permanent buildings and strategically placed "tent cities". The chief focal point of activities was, as expected, the spacious Wright Lodge, where ample and tasty meals were set before the rapaciously hungry Weekenders.

The Ranger Camp's 15 saddle horses (and 1 mule) were certainly kept busy as Baldy, Mrs. Baldy and little Baldies tried out their equestrian skills. No doubt the noble steeds probably had the last laugh as some of us later favored our "tender areas". Another popular attraction was the swimming pool. While not as large as that "grand-daddy of all" at Irondale, the Beaumont edition, nevertheless, proved to be most adequate in size and surely very superior in other points such as overall lighting for night swimming, and shower facilities. And in the spectacular water carnival on Sunday afternoon never had there been so many different events, entrants of all ages, officials, trophies and prizes. There was a goodly amount of spirited softball action, too. Unfortunately for the Teenagers, a few of their key stalwarts from previous years were off to college, or otherwise absent, and as a result the Baldies were able to take advantage of the situation and chalk up a couple of wins -- or could it be that some of our "ancients" are improving with age? Be that as it may, time will tell! At any rate, elected as the 20th President was Mort Werner.

October brought the first stag outing at S-F Ranch. A chartered bus load of Baldies took full advantage of a Saturday which featured perfect weather by

rolling down to the Council's newest and largest camping area. The carefully planned itinerary took the ESA pioneers to all of the major parts in the huge complex. Equally as enjoyable, of course, was the savory sustenance. Most assuredly, S-F is by far the finest and most advanced Scout camp in the nation. It was readily apparent that a much wider range of activities will be offered here. A considerable amount of the credit for setting up and operating this camp must be accorded ESAer Mel Lcewenstein of the Professional Staff.

In November another successful Boy Scout Circus made its appearance, during which, ESA again presented the Variety Show. And many individual Baldies were pressed into service in various other phases of the giant extravaganza. (Would you believe "organized confusion"?)

Shortly after the beginning of the new year of 1967, another noteworthy Eagle Scout Recognition Day crossed the horizon. The challenge to the class of new Eagles was presented by Howard Lee Young, President of American Zinc Co., and himself an Eagle Scout. A well-received innovation this year was a reception for all after the impressive ceremonies had taken place. This was the 7th annual "Day" held at the Scottish Rite Cathedral.

And now, as ESA marks its 20th year of existence, we approach the highlight of our social activities for the past two decades: the Twentieth Anniversary Dinner-Dance. Plans are under way to honor the founders of ESA, the Past-presidents and all the Baldies in general. Taking full advantage of some of our more influential members, we've been fortunate to secure the St. Louis Club, one of the newest and most fashionable in this area. Chairman Bert Tremayne and his committee have been hard at work for several months pointing toward the April 1 date. Definitely predicted is a gala and memorable evening.

And as ESA contemplates the past twenty years, it also looks ahead...and to the many challenges it faces in the continual support of the Boy Scout movement. Let us be steadfast in spirit, set our standards high and be ever mindful of our stake in the future.

THE EARLY YEARS



In the beginning ESA Incorporation



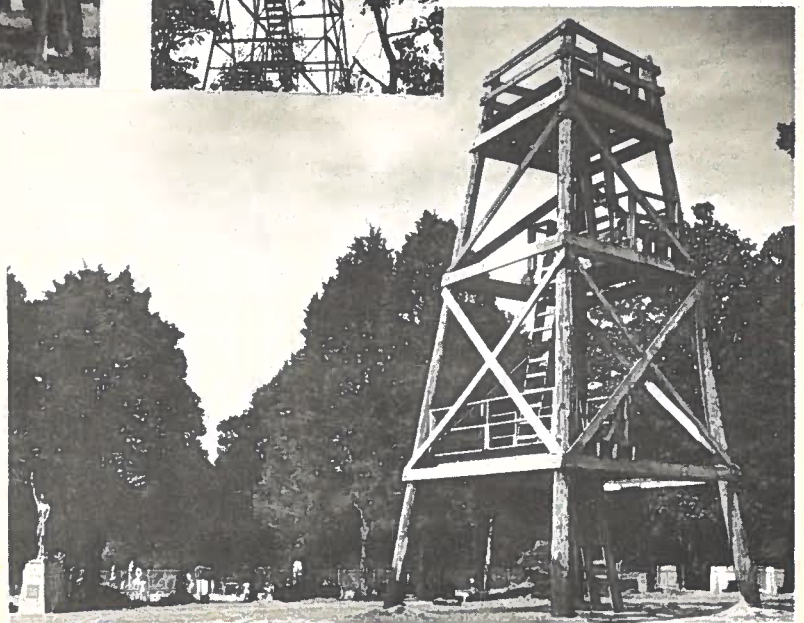
Chuck Wagon 1957



Eagles' Nest



Tower Dedication



Eagles' Nest No. 2

SPOTTING EAGLES



ESA Booth
Scout Exposition 1954



Eagles' Recognition Day 1958



S.O.L.E. Campaign at Scout Exposition 1960



Family of Eagles 1965



Eagles' Recognition Day 1957



Eagles' Recognition Day 1959

LABOR DAY WEEKENDS AT IRONDALE



Square Dance 1956



Change of Presidents 1963



Kids' Campfire 1964



Mess Hall 1956



Swim Carnival 1956



1957 Oops -- Not Irondale

MODERN ERA



1.



2.



4.



3.



5.

1. Beaumont 1966

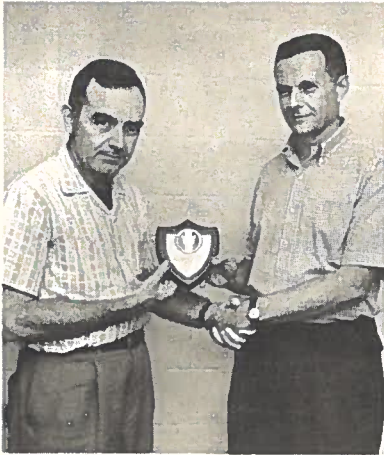
2. At Swim Pool, Beaumont 1966

3. Swim Carnival, Beaumont 1966

4. S-F 1966

5. Atop Castle Rock at S-F 1966

1966 - 1967



In Appreciation 1966



Board Meeting 1967



Eagles' Recognition Day 1967



Eagles' Recognition Day 1967

Tour of New
St. Louis Council
Service Center
1967



ARTICLES OF AGREEMENT
OF
EAGLE SCOUT ASSOCIATION
OF ST. LOUIS AREA COUNCIL,
BOY SCOUTS OF AMERICA

KNOW ALL MEN BY THESE PRESENTS: That we, the undersigned, desirous of forming a corporation under the Laws of Missouri, and more particularly, under the provisions of Chapter 352 of the Revised Statutes of Missouri, 1949, and the amendments thereto, relating to a governing benevolent, religious, scientific, fraternal, fraternal-beneficial, educational and miscellaneous associations, have entered into the following agreement:

FIRST: The name of this organization shall be

EAGLE SCOUT ASSOCIATION OF ST. LOUIS AREA COUNCIL
BOY SCOUTS OF AMERICA

SECOND: This organization shall be located in the County and City of St. Louis and shall be active within the geographical limits of the St. Louis Area Council of the Boy Scouts of America.

THIRD: This organization shall continue and exist for a perpetual term.

FOURTH: This association is formed and organized for the following purposes, to-wit:

(a) To operate as a non-profit association, civic in its nature and interest; to assist the Boy Scouts of America in the promotion of better and more widespread Scouting in this area subject to the rules of the St. Louis Area Council and to promote the welfare of the community.

(b) To buy, purchase, or otherwise acquire, hold, own, possess, sell, lease, rent, exchange, assign, convey and/or transfer real or personal property of every kind and character, incidental, essential or necessary to or for the purpose herein set forth without profit or gain to the members of the association, and as may be sanctioned by law.

(c) To invest and/or loan money, execute, make, endorse, accept, assign, transfer, sign and deliver notes, drafts, bills of exchange, securities, obligations and evidence of indebtedness of every kind and character incidental or necessary to or for the purposes herein set forth, without gain or profit to the members of the association, and as may be sanctioned by law.

FIFTH: This organization shall have the power to raise money by dues from its members in the manner to be fixed and determined by its By-Laws and the property and funds of this corporation shall be used only for the purpose of the corporation as herein expressed and not for the benefit of its members, nor shall any fund or money of the corporation be paid to any member or members thereof, accept in payment for property received and services rendered; and if at any time this corporation should dissolve for any reason, all funds and property then belonging to this corporation shall be distributed to the St. Louis Area Council of the Boy Scouts of America for the betterment of Scouting.

SIXTH: The officers of this corporation shall be in accordance with the By-Laws of the Eagle Scout Association of the St. Louis Area Council, Boy Scouts of America and they shall hold office during their term as set forth in the By-Laws. The members may adopt and amend its By-Laws for the regulation of its own affairs and not inconsistent with the Constitution of the United States and the State of Missouri.

SEVENTH: Your petitioners expressly declare that this corporation is not organized for manufacturing, agricultural or business purposes of any kind, and for the pecuniary gain or profit of its members and that the corporation has no capital stock or shares thereof.

IN TESTIMONY WHEREOF, we have hereunto set our hands this 10th day of October, 1953.

Albert W. Gruer, Jr.
President

Wm. M. Livingston
Vice-President

Ray Brigham
Vice-President

Charles Bland
Treasurer

Jack Grossman
Vice-President

Jerome W. Steiner
Secretary

BY-LAWS OF THE EAGLE SCOUT ASSOCIATION OF ST. LOUIS

I. MEMBERSHIP

The membership shall be open to all Eagle Scouts who are at least 21 years of age and eligible to be registered with the St. Louis Area Council B. S. A. Maintenance of the membership shall be dependent upon payment of the annual dues.

II. MEETINGS

The Association shall hold a meeting annually for the consideration of reports, for the election and installation of new directors, and the transaction of such other business as may come before the meeting. Special meetings may be held at such times as the Board of Directors of the Association may prescribe. Upon petitions signed by 10% of the members of the Association or by 50 members or more thereof, the President or the Recording Secretary shall call a special meeting of the Association to act upon subject matter specified in such petition. Fifteen members shall constitute a quorum at the annual or at any special meeting of the Association. Notice of any meeting of the Association shall be by mail at least 10 days prior to the date of the meeting.

III. BOARD OF DIRECTORS

Section 1. The government of the Association is vested in the Board of Directors who shall have full and complete control and direction of the affairs of the Association subject to these By-Laws and the action of the Association in annual, regular or special meetings.

Section 2. The Board of Directors shall consist of 24 members of the Association. Six of these members are the previous six presidents. Of the remaining 18 members, six are elected each year and serve for a three year term. A Board member can only serve two consecutive three year terms. After an interval of at least one year a member is eligible for re-election. When a vacancy occurs in the Board, such vacancy shall be filled by appointment of the President until the next annual election at which time the unexpired term shall be filled by election.

Section 3. A Nominating Committee for new Board members, consisting of no less than three nor more than five past presidents, shall be appointed by the President to prepare a list of nominees for election to the Board. The President and Executive Vice-President shall serve as ex-officio members of this committee without vote. The Committee shall submit the names of its nominees to the Recording Secretary at least thirty days prior to the date of the annual election. Should it be necessary to select a nominee to fulfill an unexpired term, the Nominating Committee will designate which nominee is to fill the vacancy. The Recording Secretary, at least 14 days prior to the annual election, shall solicit direct nominations for new members of the Board from the membership. Prior to closing the nominations, the Committee shall consult each nominee personally and obtain his agreement to serve as either, or both, an officer of the Association at any time during his term as a Board member, if so elected; or as chairman, or co-chairman of any standing committee or special committee, if so appointed by the President. The Report of the Nominating Committee shall be mailed to the members of the Association at least fourteen days prior to the date of the annual election.

Section 4. All Additional nominations must be in the hands of the Recording Secretary seven days before the beginning of the annual Labor Day weekend and the annual election shall be held during that weekend.

Section 5. Members may vote for as many new candidates for the Board as there are vacancies to be filled by election.

Section 6. The Board shall meet within ten days after the annual election for the purpose of organization. At this meeting the Board shall elect from its members the President, Executive Vice-President, three Vice-Presidents, Recording Secretary, Membership Secretary, and Treasurer of the Association.

Section 7. The Board shall organize itself, adopt rules, appoint committees, schedule meetings, etc., in whatsoever manner it chooses in order to carry out its responsibilities under these By-Laws.

Section 8. The President, or in the case of his resignation, death, or inability or disability, the Executive Vice-President, may call meetings of the Board of Directors at any time. The Board of Directors will meet at least five times each year following the annual meeting for the purpose of hearing committee reports and conducting business.

Section 9. A quorum of the Board of Directors shall be nine members.

IV. DUTIES OF OFFICERS

Section 1. The President shall be the executive head of the Association, presiding at meetings of the Board and of the Association and performing such other duties as may be assigned by the Board.

Section 2. The Executive Vice-President shall perform such duties as may be assigned by the President or the Board of Directors. In the absence or disability of the President, the Executive Vice-President shall have all the powers and duties of the President.

Section 3. The Vice-Presidents shall direct and coordinate the activities of the standing and special committees as assigned by the President and shall perform such other duties as may be requested by the President or by the Board of Directors.

Section 4. The Recording Secretary shall record and preserve the minutes of all meetings of the Association and of the Board of Directors, and shall do and perform such other duties as may be requested of him by the Board of Directors or as ordinarily and usually pertain to his office.

Section 5. The Membership Secretary shall see that every member is registered with the St. Louis Area Council B. S. A., issue annual membership cards to each member in good standing, maintain the membership list, furnish the necessary information for publishing the bi-annual roster, and shall perform such other duties as may be requested of him by the Board of Directors or as ordinarily and usually pertain to his office.

Section 6. The Treasurer shall receive and disburse the funds of the Association, shall keep proper books of account, shall make an annual report to the Association, and shall perform such other duties as may be requested of him by the Board of Directors or as ordinarily and usually pertain to this office.

Section 7. A Nominating Committee for officers shall be appointed by the President from past presidents of the Association. The committee shall consist of no less than three nor more than five members. The President and Executive Vice-President shall serve as ex-officio members of this committee without vote. The Committee shall submit its nominations to the first meeting of the Board following the annual election of Board members. Before closing its nominations, the Committee shall consult each nominee personally and obtain his agreement to serve in the particular office for which he is being nominated.

Section 8. Election of the officers by the Board of Directors shall take place at the first meeting of the Board following the annual election of Board members. Nominations, in addition to those made by the Committee, may be made from the floor during the election meeting, and it shall be the duty of the presiding officer to call for such nominations.

V. COMMITTEES

Standing and special committees shall be appointed by the President from among the Association membership and shall be responsible to him in his capacity as executive.

VI. DUES

Per capital dues of the Association shall be \$3.00 per year. The approval of two-thirds of the total membership voting shall be required in order to change the dues or to establish an assessment. This provision shall not apply to the establishment of prices for social events.

VII. PARLIMENTARY AUTHORITY

The rules contained in Roberts Rules of Order, Revised, shall govern the Association in all cases where they are applicable and in which they are not inconsistent with these By-Laws or with any rules which the Association may adopt.

VIII. AMENDMENTS

Section 1. The members, by affirmative vote of two-thirds of the members attending, may, at any regular or at any special meeting called upon ten days prior notice for that purpose, alter or amend these By-Laws.

Section 2. The By-Laws may also be amended by a two-thirds majority vote of the Board of Directors.

Section 3. If any member desires to offer an amendment to the By-Laws, he shall file such an amendment with the President, and such an amendment shall not be voted on unless written notice be sent to all members of the Board of Directors giving notice of the proposed amendment at least 10 days before the meeting of the Board of Directors, provided, however, that the By-Laws may be amended at any meeting of the Board of Directors by unanimous consent of those present, but where at least a quorum must be in attendance.

HANDBOOK FOR DIRECTORS, OFFICERS, AND COMMITTEEMEN
(REVISED June 20, 1966)

INTRODUCTION

This handbook is intended to be of use in the direction and administration of ESA activities.

The information contained herein is not intended to change or supersede the By-Laws. In case of conflict, the By-Laws take precedence. Amendments to the information contained herein shall be made by the policy committee and submitted to the Board of Directors for approval. The Policy Committee may originate changes or act on changes requested by the Board of Directors.

BOARD OF DIRECTORS:

The Board of Directors meet at least five times each year for the purpose of hearing committee reports and to conduct business.

The first meeting of the Board is for the purpose of organization and takes place during the Labor Day weekend immediately after the annual meeting. Election of officers for the coming year takes place at this meeting.

PRESIDENT:

The President is the executive head of the ESA. By virtue of his office, he is a member of the Executive Board of the St. Louis Area Council and represents the ESA in Council activities.

The President calls the Board of Directors and general membership meetings.

The President prepares and causes to be mailed to the general membership, a minimum of two newsletters during his term of office.

The President, upon receipt of notice from the Membership Secretary, shall write a letter of welcome to each new member accompanied by an up-to-date copy of the roster, an ESA patch, and a copy of the President's latest newsletter.

The President, with the advice and counsel of the Executive Vice-President and Vice Presidents, selects and appoints all committee chairmen

The President, with the advice and counsel of the Executive Vice-President and Vice-Presidents, selects and appoints all committee chairmen.

The President assigns to each Vice-President the responsibility of certain committees.

EXECUTIVE VICE-PRESIDENT:

The Executive Vice-President is the president-elect of the ESA. He assists the President in the performance of his duties as executive head of the organization. By working with the President, he becomes familiar with the duties of the President.

VICE-PRESIDENTS:

The Vice-Presidents shall direct and coordinate the activities of these committees assigned by the President.

This work shall include the following:

- a. Assist the President in selection of committee chairmen and co-chairmen.
- b. Plan, with each committee, the coming year's program and report on this program to the Board of Directors.
- c. Coordinate the efforts of each of the committees assigned to him and through the appropriate Vice-President the work of these committees with other committees.
- d. Obtain from each committee chairman at the end of the year a detailed review of the committee's activity. This will be filed with the Recording Secretary and will serve as an aid to the succeeding chairman.

TREASURER:

The President shall appoint an Auditing Committee to examine the books before they are transferred from the old Treasurer to the new Treasurer.

The Treasurer shall present to the Board of Directors a budget for the fiscal year at the second Board meeting. The fiscal year will be from one annual meeting to the next. The budget shall contain a breakdown for each committee. He shall report on the financial status at each Board of Directors meeting and general membership meeting. This report shall include a comparison of actual expenditures and income and budgetary expenditures and income.

RECORDING SECRETARY:

The Recording Secretary when notified by the President shall issue notices for Board and general membership meetings.

The Recording Secretary shall record minutes of all Board and general membership meetings. Minutes of Board meeting shall be distributed to all Board members. Minutes of general membership meeting shall be read at the following meeting.

The Recording Secretary, in cooperation with the Nominating Committee for new Board members, shall conduct the annual election procedure for Board members as outlined in the By-Laws under III, Board of Directors, Sections 3 and 4.

The Recording Secretary shall maintain the correct signature card at the bank.

The Recording Secretary shall keep on hand the final detailed reports of each committee. These reports will be made available to correct committee chairman.

MEMBERSHIP SECRETARY:

The Membership Secretary shall prepare a statement of dues to be sent to all members in September. Along with the statement of dues, the Membership

Secretary shall send a roster questionnaire soliciting all the necessary information for the bi-annual ESA roster. An additional statement will be sent to delinquent members in January.

In January, the Membership Secretary shall register every paid ESA member in a "Member at Large" capacity with the St. Louis Area Council, unless the member on his annual registration form signifies he is already registered in some other Scouting capacity.

The Membership Secretary shall maintain an accurate, up-to-date list of all members, including telephone, address, wife's name and other pertinent data.

He shall work with the Council office in maintaining an accurate set of addressograph plates of the mail addresses of the members of the ESA and shall issue as soon as possible an ESA membership card to each member who has paid his dues.

The Membership Secretary shall provide information for publishing bi-annually a new roster to the general membership.

The Membership Secretary shall contact all prospective members. Upon receipt of the completed application and check the Membership Secretary shall:

1. Enter the pertinent information in triplicate on a Scouter Additional Enrollment form and send to the Council office.
2. Dues will be sent to the ESA Treasurer.
3. A "Report of New Member" form will be made out in duplicate with one copy sent to the President and the other to the Council office.

COMMITTEES-GENERAL INFORMATION:

All committees shall endeavor to enlist the services of as many ESA members as possible. Particularly emphasis shall be made to make new members active.

Committees shall meet as often as necessary to carry out their specific duties. The appropriate Vice-President shall be considered an ex-officio member of the committee. Where it is desirable to insure continuity of program from year to year and to provide experienced leadership, a committee may be headed by a chairman and a co-chairman, with the co-chairman succeeding to the chairmanship the following year upon appointment by the President.

Each chairman or co-chairman shall be prepared to report on their programs at each Board and general membership meeting. Whenever possible each committee shall make its plans early in the year and report on its plans at the first opportunity.

When a committee plans activities to which outsiders may be invited as guests or participants, the committee shall establish its own rules as to such participation.

Each committee chairman shall act in liaison with the Publicity Committee, keeping the latter constantly informed.

SOCIAL COMMITTEE:

The Social Committee plans and carries out the social program for the ESA which shall include at least two social events. The number and type of social events shall be limited to the number and kind of activities that a reasonable group of the membership would attend. Two stag affairs are recommended as regular events.

The Social Committee is responsible for refreshments at all general membership meetings.

Name tags shall be used at all social events. Every possible effort shall be made to greet and welcome new members and introduce them to others.

The Social Committee shall give detailed information to the Publicity Committee in sufficient time to allow printing and distribution of notices.

Fees charged for social events shall be sufficient to make the event self-supporting.

The presence and use of alcoholic beverages are strictly forbidden in Scouting Reservations. Therefore, any social event held on Scout Reservations must comply with this regulation.

ROSTER COMMITTEE:

The Roster Committee shall issue a new roster to be published in March of the odd numbered years. The roster will include the names of all paid-up members for the current fiscal year or the one year preceding. The roster shall list the member's name, home telephone number, address, wife's name, occupation, office telephone, the troop number (or city if not St. Louis Area Council) and year the Eagle Badge was awarded.

PUBLICITY COMMITTEE:

The Publicity Committee periodically issues the news bulletin and such additional notices and publications as may be required to announce social and other activities.

The news bulletin should contain as much news as possible about ESA members and activities. The names of new members shall be given as they join. The Committee compiles the news bulletin in typewritten form and forwards it to the Scout headquarters for printing and distribution.

This Committee arranges for press coverage of ESA activities whenever possible.

All announcements of events being held at the Scout Reservations shall clearly state that alcoholic beverages are not permitted.

HISTORIAN COMMITTEE:

The Historian Committee serves as custodian of all historical material pertaining to ESA such as photographs, news articles, letters, and other pertinent documents that have a historical value. A scrap book containing such materials shall be maintained by the Committee and be put on display at all social and other logical events.

LABOR DAY WEEKEND COMMITTEE:

The Labor Day Weekend Committee and necessary sub-committees plan and supervise the two (or three) day outing for ESA members and their families at a St. Louis Area Boy Scout Camp. The program must take into account the needs of all members and their families with special consideration being given to both children and teen-agers. Plans must include such matters as advance publicity, financing, menu planning, meal preparation, cabin and tent assignments, entertainment, swimming and athletic programs, and church services,

Budgeting and financing must take into account all anticipated costs.

Assistance in planning and/or administrating the program can be obtained by calling on other committees, such as publicity, swimming, and social.

A schedule of events and meal time shall be given to each person in attendance.

Members should be cautioned, in advance publicity, to leave dogs and alcoholic beverages at home.

NOMINATION COMMITTEES:

The Nominating Committees for nominations to the Board of Directors and for Officers will take the following into account in making their selections:

1. Activity in ESA affairs in the immediate past.
2. Activity in the ESA affairs during membership in the Association.
3. Indication of a strong sincere desire in becoming more active in the ESA affairs.
4. In the case of officers, a wide knowledge of ESA activities gained in committee work over a period of years.

EAGLES RECOGNITION DAY COMMITTEE:

The Eagle Scout Association and the Advancement Committee of the St. Louis Area Council sponsor a convocation of ESA members and new Eagle Scouts in the St. Louis Area Council, together with their families, for the purpose of honoring the new arrivals to Scouting's highest award.

SCOUT EXPOSITION COMMITTEE:

Every even-numbered year the St. Louis Council holds a Boy Scout Exposition. The Scout Exposition Committee arranges for, builds and mans the ESA sponsored booth at these Expositions.

The purpose of this booth is threefold:

1. To serve as a rallying point for ESA members and Scout Executives as a home base from which we conduct various VIP's about the Exposition.
2. To inform the public of the existence and activities of the ESA.
3. To attract new members to the ESA.

This Committee carries out the above functions by:

- A. Arranging with the Scout Council for the booth and letting them know we will be available for such services the Council may request.
- B. Designing and constructing a booth that will fulfill purposes 2 and 3 above. Volunteer labor and design talent are essential.
- C. Arranging with ESA members to help man the booth and to have brochures, application blanks, etc. available.
- D. Removing exhibit and returning any borrowed equipment.

CIRCUS COMMITTEE:

The Circus Committee is established to assist the Council in putting on the Circus by producing a variety show for entertaining Circus participants. This show is staged in a large assembly area. Acts for the show may be selected from participating groups in the Circus such as the Scout Band and Indian Dances. Additional professional acts that have proven successful are: boxing, wrestling, magician, fencing, hill-billy band, etc.

The Committee should arrange in advance for a budget from the Scout Council for procuring these acts.

The Committee also provides a master of ceremonies for each night's variety show and provides sufficient ushers (four to eight) to maintain order around the stage.

THE POLICY COMMITTEE:

The immediate past president, or in his absence his predecessor, will be chairman of the Policy Committee.

The Policy Committee shall act as an advisor to the President and Board of Directors in steering the ESA toward the accomplishment of its basic objectives.

It will maintain the Handbook for Directors, Officers and Committeemen containing up-to-date procedural and organizational information, including job descriptions, for the guidance of the organization.

Upon the request of the President or Board of Directors the Policy Committee will undertake to study and offer solutions for problems occurring in the policy field.

It will also, on its own initiative, study any facet of the ESA's activities where it feels it may offer helpful guidance.

1966 - 1967
EAGLE SCOUT ASSOCIATION
Twentieth Anniversary

BOARD OF DIRECTORS

<u>Term Expires 1967</u>	<u>Term Expires 1968</u>	<u>Term Expires 1969</u>	<u>Past Presidents Ex-Officio</u>
Dr. Bill Burmeister	Jay Johnston	Philip Hellwege	Dickson Stauffer
Frank Mange	Bill Johnson	Louis Washauer	Harry Davis
Don Lang	Morton Werner	Charles Hartmann	H. Douglas Day
Bert Tremayne	Harold Bamburg	John Mahoney	Louis Heyman
G. Ben Ross	Allan Davis	James Boyd	Edward Bilhorn
Gene Cole			Orlie Wilkening

OFFICERS

President	Morton Werner
Exec. Vice-President	Harold Bamburg
Vice-President	Philip Hellwege
Vice-President	Frank Mange
Vice President	Louis Washauer
Treasurer	Jay Johnston
Recording Secretary	John Mahoney
Membership Secretary	Allan Davis

PAST PRESIDENTS

Albert Cunliff	1947-48
Art Werder*	1948-49
Tom Connelly	1949-50
Stuart Senniger	1950-51
Bob Phemister	1951-52
Bill Guthrie	1952-53
Al Gruer	1953-54
Jack Grossman	1954-55
Charles Bland	1955-56
Jerry Steiner	1956-57
G. Ben Ross	1957-58
Gene Cole	1958-59
Orlie Wilkening	1959-60
Edward Bilhorn	1960-61
Ronald Smillie	1961-62
Lou Heyman	1962-63
H. Douglas Day	1963-64
Harry Davis	1964-65
Dickson Stauffer, Jr.	1965-66

*Deceased

A

Adams, Donald W. Sr. (Bette) 1938 Tr.308
6390 Messick Rd, Memphis, Tenn. 38117
New Departure Div. G.M.
4990 Poplar Ave., Memphis, Tenn.
Home 682-8015

Appel, Louis J. (Florence) 1932 Tr.247
11715 Denny Road, St. Louis 63126
National Lead Co. Titanium Division
Mississippi River & River Des Peres
St. Louis 63111
Home VI3-3513 Business FL3-3980

Aschmeyer, F. Neil (Lois) 1944 Tr.21
39 Enfield Rd., St. Louis 63132
Attorney, Stolar, Kuhlmann,
Heitzmann and Eder
515 Olive Street
Home WY3-4413 Business CE1-2800

Atkins, Paul F. 1952 Wichita Falls, Tx.
4873 Woodstock 63136
USAF Aeronautical Chart & Info Center
2nd and Arsenal
Home CO1-2902 Business TO5-1210
(Ext 406)

Austin, Martin G. (Beverly) 1938 Tr.30
#40 Villa Coublay, St. Louis 63131
Physician, 11745 Olive Street Road
Home HE2-6366 Business HE2-2071

B

Baer, Sidney R., Jr. 1933 Tr.186
21 Fordyce Lane, St. Louis 63124
Investments
Home WY3-4874 Business WY3-4874

Balven, Martin G. (Emma) 1963 Tr.186
630 St. Christina Ln., St. Louis 63031
Emerson Elec.Mfg.Co., 8100 Florissant
Home UN4-4318 Business CO1-1800
(Ext 2833)

Bamburg, Harold B. (Judy) 1939 Kirksville
7012 Kingsbury Blvd., St. Louis 63130
Lawyer, Thompson, Walther and
Shewmaker, 407 N. 8th St.
Home PA5-4516 Business CE1-0838

Barnes, Jack B. (Alice) 1932 Tr.25
9554 Litzinger Rd., St. Louis 63124
Mass.Mut'l.Life Ins.Co., 1015 Locust
Home W01-2895 Business CH1-6585

Barnhart, Verne, Jr. 1958 Tr.17
2 Heartwoods Ct., St. Louis 63132
Midwest Laundries Inc., 6221 Vernon
Home WY1-0802 Business PA1-1126

Barrett, Lester E. (Charlotte) 1923 Tr.46
8052 Venetian Dr., St. Louis 63105
Barrett Elec.SupplyCo., 2936 Locust
Home PA1-1237 Business JE3-8800

Batts, Robert H. (Betty) 1960 Tr.301
348 S.Maple Ave., St. Louis 63119
Ralston Purina, 835 South 8th St.
Home W01-1018 Business CH1-3600

Bauer, Werner K. (Barbara) 1935 Tr.178
3 Algonquin Estates, St. Louis 63122
Midwest Machinery Co.
413 Hanley Industrial Court
Home W02-7849 Business MI7-3250

Bauman, Carl S. (Claranne) 1923 Tr.90
7244 Stanford Ave. University City
63130
Hamilton-Schmidt Surgical Co.
3456 Lindell Blvd.
Home PA7-1617 Business JE1-3222

Beimdiek, Donald U. (Carolyn) 1947 Tr.362
18 Chafford Woods, St. Louis 63144
Attorney, Armstrong, Teasdale,
Kramer & Vaughn, 611 Olive St.
Home W01-2771 Business MA1-3670

Beirne, Dominic J. (Grace) 1929 Tr.44
1551 Giesecking Lane, St. Louis 63147
Adjutant Gen.Publication Center
U.S.Army, 1655 Woodson Road
Home EV2-0608 Business HA7-6100
(Ext 316)

Berger, Joseph II (Elaine) 1941 Tr.90
6 Terryhill Lane, St. Louis 63124
United Lumber Co., 1401 S.Hanley Rd.
Home HE2-8151 Business ST1-0430

Bertsch, Hugh 1931 Tr.7
5560 Pershing Ave., St. Louis 63112
Mallinckrodt Chemical Works,
3600 N.Second Street
Home V03-6847 Business CE1-8980

Bickley, E. Allen (Rosemary) 1934 Tr.303
463 Newport Ave., St. Louis 63119
The Pfeiffer Co. 3965 Laclede
Home W01-6295 Business FR1-3000

Bierman, Lawrence L. (Jeanne) 1945 Tr.90
9645 Mesa Drive, St. Louis 63132
Bee Hat Co., 1021 Washington Ave.
Home WY4-0646 Business CE1-6631

Bilhorn, Edward W. (Beth) 1933 Tr.1
28 Southridge Dr., St. Louis 63122
Edward W. Bilhorn & Assoc.-
Consulting Engineer, 9827 Clayton Rd.
Home W02-5531 Business WY3-6060

Bircher, John L. (Melanie) 1942 Tr.183
3932 Federer Place, St. Louis 63116
Physician, 3654 S. Grand Ave.
Home PL2-2088 Business
PR3-1421

Birckhead, Roy (Lavern) 1932 Tr.92
3704 Manola, St. Louis 63120
Personal Auto Service, 3704 Manola
Home EV2-6942 Business EV2-6942

Bland, Charles H. (Betty) 1936 Tr.41
217 Spencer Road, St. Louis 63119
Bland & Co. Ins., 119 N. 4th Street
Home W02-5161 Business CE1-3550

Bland, John W. (Ruth) 1941 Tr.334
4 Windsor Lane, Kirkwood 63122
Engineer, Ralston-Purina
Checkerboard Square
Home Y05-8676 Business CH1-3600

Boethelt, Roy W. (Dorothea) 1935 Tr.209
2818a Meramec Street, St. Louis 63118
City of St. Louis, 12th & Market Sts
Home FL3-1445 Business MA1-5560
(Sta 325)

Bowen, Eldred W. (Ruth) 1930 Tr.27
9383 W. Pine St., St. Louis 63117
Pet Milk Co., Arcade Bldg, Box 392
Home W01-6297 Business MA1-5400

Bowman, James C. (Sarah) 1937 Tr.7
269 Horseshoe Dr., St. Louis 63122
Conductron-Missouri, St. Charles, Mo.
Home Y04-9861 Business RA3-1515

Boyd, Edward J. (Virginia) 1946 Post 5
42 Webster Acres, St. Louis 63119
Post Dispatch, 1133 Franklin
Business MA1-1111
(Ext. 582)

Boyd, James L. (Charlotte) 1954 Tr.3
803 Lightwood Dr., Hazelwood 63042
ACIC Cartographer, 2nd and Arsenal
Home WA1-0544 Business T05-1212
(Ext 498)

Brennecke, Robert A. (Emerine) 1924 Tr.27
33 Chestnut Hill Ln., St. Louis 63119
Diners Club, 812 Olive
Home W08-2242 Business CH1-9666

Brodeur, Armand E. (Gloria) 1939
141 Horseshoe Dr., St. Louis 63122
St. Louis University Radiologist,
1402 S. Grand Blvd.
Home Y05-4654 Business M04-7222
T05-2288

Burger, J. Davin (June) 1941 FallsView, W.VA.
310 Melville, St. Louis 63130
University Academy, 310 Melville
Home PA7-7349 Business PA7-6018

Burmeister, R. William (Florene) 1944 Tr.360
10834 Forest Circle Dr., St. Louis 63128
Physician, City Hosp., 1515 Lafayette
Home VI3-7843 Business CE1-3700
(Ext.294)

Burneson, J. Harold (Beverly) 1941 Tr.346
1107 Twinbrook Dr., St. Louis 63119
Sverdrup & Parcel
Home W01-5430 Business MA1-5771
(Ext 277)

Burrows, John K. (Mary Dell) 1943 Tr.229
148 RidgeCrest Drive, Rt.4, River Bend
Estates, Chesterfield 63017
McDonnell, P.O. Box 516, St. Louis
Business PE1-2121

Busch, Edgar T. (LaVerda) 1935 Tr. 209
9440 Arban Drive, St. Louis 63126
St. John's Mercy Hospital,
615 South New Ballas Road
Home VI3-2668 Business HE2-6500

C

Cahill, Daniel M. (Carolyn) 1950 Tr.220
6108 Tennessee, St. Louis 63111
A. E. Schmidt Co., 112 Sidney St.
Home PL2-5103 Business PR3-8686

Capps, George H. (Helen) 1931 Tr.102
8 Huntleigh Woods, St. Louis 63124
Capitol Coal & Coke Co., 9550 True
Home Y05-5267 Business PA5-8207

Carter, William C. Tr.374
Box 18, Room C-335, Meridian, Miss.
U. S. Navy

Carter, William R. (Erin) 1927 Tr.7
928 Lebon Drive, St. Louis 63137
Fisher Body Div., 3809 N. Union Blvd.
Home UN7-0489 Business EV3-2250
(Sta 517)

Casey, James H. 1954 Tr.98
6254 Waterman Blvd, St. Louis 63105
T.M.C. U.S.Army, 12th & Spruce Sts.
Home PA7-2224

Cassilly, Edward J. Jr.(Frances)1932
Tr.308
1231 S. Geyer Rd., St. Louis 63122
Builder Real Estate, 129 E Lockwood
Home Y06-8236 Business W01-6715

Cassilly, William S.(Anita Louise)
1935 Tr.308
445 N. Berry Rd., St. Louis 63122
William S. Cassilly, Inc.,
131 E. Lockwood Blvd.
Home W02-5582 Business W01-6715

Chapman, Willie E.(Victoria) 1934 Tr.79
4732 Palm Ave., St. Louis 63115
USA Mobility Equipment Center,
410 North Broadway
Home EV3-4648

Charles, Cecil M.(Sylvia) Paducah, Ky.
16 Litzsinger Lane, St. Louis 63124
Physician, 911 S. Brentwood
Home W02-5018 Business PA1-5511

Chorlins, Ivan (Joy) 1941 Tr.30
700 Mansfield Dr., St. Louis 63132
St.Louis Office SupplyCo., 705 Olive
Home WY3-6355 Business CH1-7350

Christensen, Harold E.(Marylyn) 1950
Tr.509
3945 Fairway, Florissant 63031
McDonnell
Home TE1-4336 Business PE1-2121
(Sta 3641)

Clader, Ralph H.(Jean) 1940 Tr.188
31 Hardith Hill Ct., St. Louis 63119
R.T.French Co., Rochester, N. Y.
Home W01-1245

Cole, Gene A. (June) 1941 Tr.261
329 Dobbin Rd., St. Louis 63119
Continental Assurance Co.,
225 S. Meramec St.
Home W01-3561 Business PA7-8854

Connelly, C. Clayton, Jr.(Betty) 1946
Tr. 308
756 Craig Drive, St. Louis 63122
Dentist, 206 W. Argonne Drive
Home Y05-9212 Business Y05-3837

Connelly, Tom J.(Margaret)1933 Tr.177
54 Daryl Lane, St. Louis 63124
Krupnick & Associates Inc.,
508 North Grand Blvd.
Home WY4-0936 Business JE3-1723

Cook, James F.Jr.(Ruth) 1924 Tr.301
611 Hickory Lane, St. Louis 63131
Isaac T. Cook Co., 1818 Arcade Bldg.
Home Y04-9753 Business MA1-4570

Cox, Harvey B., Jr.(Hazel) 1960 Tr.335
Box 186, 2 Hillside Dr., Fenton 63021
Cox, Cox, Cox & Moffitt, Attorneys
706 Chestnut Street
Home 343-1275 Business CH1-5492

Cunliff, Albert E.(Elizabeth)1923 Tr.60
215 Oakwood Ave., St. Louis 63119
Attorney, Luke, Cunliff, Wilson, Herr
and Chavaux, 706 Chestnut St.
Home W01-3384 Business CE1-7130

Curtis, Allan G. 1961 Tr.304
469 Florence, Webster Groves 63119
Student
Home

Curtis, Edward G.(Mary Ellen) 1928
Tr.14
American Embassy, San Salvador, El
Salvador, Central America

Curtis, Thomas B.(Susan) 1926 Tr.14
426 Florence Ave., St. Louis 63119
Lawyer and Congressman,
Washington, D.C. 20025
Business MA1-5887

D

Danna, Michael Lee 1953 Tr.490
Wild Horse Creek Rd., Chesterfield
Mass. Mut'l. Life Ins. Co.,
7710 Carondelet Avenue
Home KE2-3366 Business PA5-2366

Davis, Allen (Jean) 1942 Tr.5
710 Hawbrook, St. Louis 63122
Monsanto Chemical Company
Home TA2-2272 Business OX4-3771

Davis, Harry E., Jr.(Kathleen)1936 Tr.2
430 Algonquin Place, St. Louis 63119
Southern Comfort Corp., 1220 N. Price
Home W02-7715 Business WY3-6606

Day, H. Douglas (Kay) 1932
270 Blackmer Place, St. Louis 63119
St. Louis Post Dispatch
Home W02-2911 Business MA1-1111

DeGroot, Stanley (Lynn) 1941 Tr.90
7415 Wellington Way, St. Louis 63105
U.S. Army-Dept. of Defense
Mart Bldg., 4300 Goodfellow
Home V03-2163 Business AM3-2818

Deiters, Charles A. (Carol) 1952 Tr.39
3240 Lin-tel Road, Melville 63125
A.B. Dick Products Co., 2121 Hampton
Home IV7-3433 Business MI7-2500

Dill, J. Anthony 1954 Tr.165
8011 Grandvista Ave., Affton 63123
Stamm, Millar & Newhoff, 408 Pine St.
Home HU1-2231 Business MA1-0983

Dilling, Kenneth E. (Frances) 1955 Tr.64
13027 Spanish Pond Rd., St. Louis 63138
Stanley Packing Co., 6376 Claxton Ave.
Home TU6-8801 Business MI7-6022

Doland, Robert J. (Frances) 1935 Tr.1
1418 Pine Valley Rd., Little Rock, Ark.
Olin Mathieson Chemical, P.O. Box 991
Little Rock, Arkansas

Drake, David B. Post 304
468 Florence Ave., St. Louis 63119
U.S. Navy
Home W02-6719

Drummond, Robert (Peggy) 1942 Tr.33
4337 Selwyn Lane, St. Louis 63044
Typographic Sales, 6225 Delmar
Home PE9-0148 Business V02-4800

Duncan, James C. 1942 Troy, Mo.
801 Main St., Troy, Missouri 63379
U.S. Army, Ft. Sill, Okla 73504
Home 528-4631

E

Earle, David F., Jr. (Mary) 1936 Tr.31
127 S. Laclede Sta. Rd., St. Louis 63139
Westinghouse Elec. Co., 411 N. 7th St.
Home W01-7581 Business GA1-6911

Eddelman, Riley R. (Ruby) 1938 Tr.50
7111 Groveland Dr., St. Louis 63120
Hazelwood School District
Home EV3-2564 Business SH1-2720

Edlin, Joseph (Miriam) 1936 Tr.90
1 Glocca Mora Lane, St. Louis 63124
Attorney, Real Estate, 3338 Olive
Home WY3-0520 Business PA5-7150

F

Feightner, Hal M. (Elizabeth) 1943
Cleveland, Ohio
10960 Warwickhall Dr., Hazelwood
Monsanto Co.
Home AX1-2143 Business WY3-1000

Feinstein, Echeal T. (Sally) 1922 Tr.90
3 Arundel Place, St. Louis 63105
Attorney, 705 Olive St.
Home PA5-6678 Business GA1-2895

Ferguson, Stephen T. (Mary Jane) 1935
Tr.93
4433 N. Haven Ave., Toledo, Ohio
Owens Illinois Glass Co.,
405 Madison Ave., Toledo, Ohio
Home 475-4989 Business 248-6741

Finklang, Frank J. (Alpha) 1942 Tr.33
9230 Macon Ave., St. Louis 63134
Aero Chart & Info. Center, 2nd & Arsenal
Home HA7-5433 Business T05-1210
(Ext 630)

Francis, Charles Jr. 1948 Tr.102
612 S. Hanley Rd., St. Louis 63105
Francis Realty Co., 5003 Gravois Ave.
Home PA7-9339 Business HU1-2100

Friedman, Nathan (Jean) 1962 Tr.11
7293 Delmar Blvd., St. Louis 63130
Broadway Jobbers, 2007 Delmar Blvd.
Home PA5-6433 Business GA1-0753

Friedman, Robert H. (Lois) 1938 Tr.90
2828 Stonington Pl., St. Louis 63131
Physician, 141 N. Meramec
Home HE2-2632 Business PA5-9555

Friedrich, E. William 1956 Tr.56
4305A So. 38th St., St. Louis 63116
Medical Student, Washington Univ.
Home FL3-6542 Business F07-6400

Fritschle, Parker W. (MaryAnn) 1955 Post 41
10146 Springwood Dr., St. Louis 63124
Standard Underwriters, Inc.,
7730 Carondelet Ave
Home WY4-1589 Business V03-0750

G

Gaddy, Robert J. (Martha) 1939 Tr.6
500 Oak Valley, St. Louis 63131
Tower Grove Bank & Trust Co.,
Home Y05-6284 Business MO4-6222

Gallagher, Pat (Charlotte) 1941 Tr.32
11631 Tescord Dr., St. Louis 63128
Builder, 11631 Tescord Dr.
Home VI3-6293 Business VI3-6293

Gamble, Theodore R. (Risph) 1938
33 Upper Ladue Rd., St. Louis 63124
Pet, Inc. 1401 Arcade Building
Home WY3-5909 Business MA1-5400

Gannon, Kenrick I. (Marion) 1932 Tr.115
7162 Wise Ave., St. Louis 63117
Southwestern Bell Tel.Co., 14 S.4th
Home MI5-5501 Business CH7-3810

Garthoeffner, Rev. George F. 1954 Tr.51
4980 Heege Road, Affton, Mo.
St. George Catholic Church
Home FL2-3544

Garrison, Nelson P. (Marjorie) 1930 Tr.22
2563 Nathan Dr., St. Louis 63136
Terminal R.R., Union Station
Home SH1-8598 Business GA1-6600
(Ext 263)

Garvey, Robert (Mary) 1941 Tr.35
9752 Margo Ann, St. Louis 63134
McDonnell Co.
Home HA9-2040 Business PE1-2121
(Ext 3603)

Gatchell, John W. (Alice) 1938 Tr.333
809 Crofton Ave., St. Louis 63119
Aero Chart & Information Center,
8900 S. Broadway
Home W01-2753 Business ME1-4800
(ext 712)

Glass, Ely (Doris) 1937 Tr.11
700 Engelton Dr., Olivette, Mo.
Corley Enterprises, 700 Engelton Dr.
Home WY4-0054 Business VI3-0515

Glazier, Howard 1959 Tr.87
7233 Chamberlain, St. Louis 63130
Student
Home V03-6844

Glazier, Samuel J. (Betty) 1959 Tr.87
7233 Chamberlain Ave., St. Louis 63130
Sales, 2801 N. Broadway
Home V03-6844 Business CE1-1313

Godfrey, P. Whit (Jane) 1939
7100 Washington, Univ. City 63130
McDonnell Aircraft, Box 516
Home PA5-1885 Business PE1-2121

Gold, Thomas R., Sr. (Odelia) 1928
1326 Aloha Drive, St. Louis 63126
Brinkley Mfg. Co., Warrenton, Mo.
Home TA1-7161 Business GL6-3455

Goldsticker, Ralph, Jr. (Helen) 1937 Tr.90
8011 Rosiling Dr., St. Louis 63105
Simon-Mogilner, Birmingham, Ala.
Home V03-3239 Business V03-3239

Goode, James S (Frances) 1932 Winchester, Va.
7398 Norwood Drive, St. Louis 63130
Missouri Pacific R.R., Mo. Pac. Bldg.
Home V02-3246 Business MA1-1000
(Sta 454)

Goodin, Robert E. (Mary) 1948 Tr.92
242 E. Skyline Dr., Ballwin, Mo.
Crum & Forster Co., Pierce Bldg.
Home LA7-4569 Business MA1-7490

Gould, Richard D. (Bib) 1932 Syracuse, N.Y.
9400 Harden Drive, St. Louis 63137
Johns Manville, 7912 Bonhomme
Home UN7-9169 Business PA1-4000

Graba, Roy R. (Gladys) 1940
2508 St. Giles Rd., St. Louis 63122
Southwestern Bell Telephone Co.
Home Y06-8622 Business CH7-3220

Gray, Everett B. (Jane) 1934 Tr.186
6 Treebrook Lane, St. Louis 63124
International Shoe Co., 1509 Washington
Home WY1-1205 Business CH1-4000
(Ext 597)

Gray, Richard W., Sr. (Helen) 1946 Tr.180
10140 Stonell Dr., St. Louis 63123
Gray's Service Station, 3360 Roger Pl.
Home ME1-5364 Business PR3-9990

Grossman, Jack (Betty) 1938 Tr.90
422 E. Claymont Dr., Ballwin 63011
Emerson Elec. Co., 8100 Florissant
Home CA7-5427 Business C01-1800

Gruenwald, Herman F. (Alice) 1932 Tr.51
16 Northridge Hills Ct., Florissant 63033
Hussman Refrigeration Co.
Home TU6-3009 Business JE1-0800
(Ext 272)

Gruer, Albert W., Jr. (Gloria) 1938 Tr. 308
342 E. Bodley Ave., St. Louis 63122
Carondelet Foundry Co.,
2101 S. Kingshighway
Home TA2-1295 Business PR1-0906

Guthrie, David B. (Betty) 1938 Tr. 308
1148 Ridgelynn Dr., St. Louis 63124
Petrolite Corp., 369 Marshall Ave.
Home WY4-1368 Business W01-3500

Guthrie, William M. (Kay) 1932 Tr. 7
426 Parkwood Ave., St. Louis 63122
Aro-Dressel Foods Inc.,
Niedringhaus and Benton Streets
Home TA1-4936 Business GL1-7660

H

Haefner, Lonnie E. (Jean) 1957 Ship 352
1801c Valley Rd., Champaign, Ill.
University of Illinois, Civil Eng.
Dept., Urbana, Illinois
Home 356-0601

Hagan, Hubert D. (Corky) 1938
136 Frontenac Forest, St. Louis 63122
Peabody Coal Co., 301 Olive St.
Home HE2-4894 Business GE6-3400

Hagan, Robert C. (Ruth) 1937 Tr. 5
9800 Southwick Dr., St. Louis 63128
Haco Business Serv., P.O. Box 8542
Home VI2-2912 Business W01-2233

Hall, Lee A. (Kathryn) 1931 Tr. 189
6 Winding Brook Lane, Ladue 63124
Physician, 35 N. Central Ave.
Home WY1-5958 Business PA7-3439

Haller, Albert J. (Karen) 1946 Tr. 192
22 Stratford Lane, St. Louis 63144
Attorney, Cupples, Cooper & Haller
7751 Carondelet Avenue
Home W01-3121 Business PA5-3070

Hampton, Robert L. (Maryle) 1945 Tr. 380
100 N. Dade, St. Louis 63135
Busy Bee Material & Const. Co.,
6401 Graham Road
Home JA1-5857 Business JA2-0601

Hanke, Harold (Jane) 1924 Tr. 35
10078 Springwood Dr., St. Louis 63124
Attorney, Smith Harris & Hanke
Home WY3-1173 Business GA1-0882

Harris, Hubert Jr. (Joan) 1957 Tr. 31
921 N. McKnight Rd., Univ. City 63132
Monsanto Co., 800 N. Lindbergh Blvd.
Home WY7-0173 Business OX4-3777

Hart, Russell J. (Marge) 1940 Tr. 189
1077 Glenway Drive, Glendale 63122
St. Louis Area Council, B.S.A.
505 Arcade Building
Home TA1-0230 Business CH1-7856

Hartmann, Charles I. (Hanne) 1940 Tr. 90
950 Times Circle, St. Louis 63141
Chenoweth-Chapman Cleaners,
4731 Delmar Boulevard
Home HE4-3621 Business F07-6250

Hartmann, Ralph W. (Toby) 1944 Tr. 90
11147 Glacier Dr., St. Louis 63141
Army Audit Agcy., 12th & Spruce Sts.
Home HE2-4610 Business MA2-2909

Harwood, John H. (Betty) 1958 Tr. 301
139 Valley Road, St. Louis 63119
Metal Goods Corp.
Home W01-4019 Business HA7-1234

Hayden, Melvin, Jr. (Carolyn) 1956 Post 114
1550 Harkee Dr., Florissant 63031
U. S. Post Office, 18th & Market
Home TE1-2819 Business CE1-7920

Hayden, Sterling 1957 Tr. 114
8747 N. Broadway, St. Louis 63147
Roosevelt High School - St. Louis
Board of Education, 3230 Hartford
Home UN7-0498 Business PR1-6020

Heard, John T. Jr. (Edith) 1936 Tr. 77
137 Plant Ave., St. Louis 63119
McDonnell Aircraft Corp.
Home W02-9042 Business PE1-2121
(Ext 6611)

Heaton, Charles T. (Mary Louise) 1932 Tr. 2
1256 Oakshire Lane, St. Louis 63122
Union Electric Company
Home TA1-1079 Business MA1-3222
(Ext 2035)

Heibel, Merlin F. (Helen) 1936 Tr. 197
24 Jameston Acres, Florissant 63033
Ford Motor Co., Hazelwood, Missouri
Home TU6-2807 Business PE1-1300
(Ext 377)

Heifetz, Gary S. 1951 Tr. 113
8120 Balson Avenue, St. Louis 63130
Attorney, Shifrin, Treiman,
Schermer and Susman
Home PA7-6138 Business CH1-2140

Hellwege, Allen W. 1958 Tr. 34
5733 Delor St., St. Louis 63109
Student at Washington University
Home HU1-0264

Hellwege, J. Philip (Shirley) 1949 Tr. 34
9434 Plainfield Dr., St. Louis 63119
McDonnell Aircraft Corp.
Home W01-2293 Business PE1-2121
(Ext 4984)

Henry, Charles T. (Helen) 1935 Tr. 8
7114 Kingsbury Ave., St. Louis 63130
City Manager, City of University City
Home PA1-4713 Business V03-8484

Hertzman, Melvin L. (Zelda) 1927 Tr. 30
52 Sun Valley Dr., Creve Coeur 63141
Attorney, Judge Advocates Office,
12th & Spruce Streets
Home HE2-4921 Business MA2-2214

Heyman, Louis H. (Maxine) 1943 Tr. 21
16 Crosswinds Dr., St. Louis 63132
Bertha Hat Co., 410 N. Jefferson Ave.
Home WY3-5548 Business CE1-7072

Hilgendorf, Walter A. Jr. 1958 Tr. 34
6455 Devonshire Ave., St. Louis 63109
Law Student, Washington University
Home PL2-8648

Hoech, John H. (Elizabeth) 1939 Tr. 348
2660 Chaucer, St. Louis 63114
McDonnell Aircraft Corp.
Home HA7-1274 Business PE1-2121
(Ext 4332)

Hofman, Edward H. (Jane) 1941 Tr. 261
11555 Francetta, St. Louis 63138
Jules Pierlow, Inc., 154 N. Meramec
Home SH1-4368 Business PA7-7188

Hopper, Edward (Sylvia) 1927 Tr. 30
7536 Byron Place, St. Louis 63105
Hopper Fur Co., 425 N. 7th Street
Home PA7-5393 Business CE1-1631

Horowitz, Ted (Joan) 1935 Tr. 30
9742 Mansfield Court, St. Louis 63124
Atlas Realty Co., 6318 Delmar Blvd.
Home WY4-7297 Business PA7-3819

Housman, Gerald F. (Mary Lou) 1953 Tr. 127
1560 Flamingo Dr., Florissant 63123
U.S. Post Office, 9621 Olive St. Rd.
Home TE1-5853 Business WY4-0522

Housman, Ronald G. (Lois) 1952 Tr. 127
5769 Rouge Ct., Dearborn Hgts., Mich.
Ford Motor Company
Home 271-3889 Business 322-4668

Howard, R.E. (Marie) 1933 Effingham, Ill.
2015 St. Clair Ave., St. Louis 63144
Monsanto Co.
Home W02-6687 Business WY3-1000

Huber, David M. 1943 Tr. 90
7823 Balson Ave., University City 63130
Tax Accountant, 1045 S. Brentwood Blvd.
Home PA7-9728 Business PA5-1514

Hulse, John W. (Rosalind) 1953 Tr. 301
1146 Albany Court., St. Louis 63119
Hunter Packing Co., 1214 N. 2nd St.,
East St. Louis, Ill.
Home W01-5319 Business MA1-7377

Hulse, John William, III (Mary Ellen)
1955 Tr. 301
433 South Chestnut, Monroe City, Mo.
Teacher, Monroe City High School
Home RE5-2972 Business PA6-5800

Hupert, Edward
7222 Amherst Ave., St. Louis 63130
Home PA7-1690

Hutcheson, Robert J. (Marie) 1936 Tr. 133
6606 O'Dell Ave., St. Louis 63139
Supervisor of Telephone Records
Washington University
Home MI5-3357 Business V03-0100
Sta. 4422

Iler, Frank, Jr. (Pamela) 1956 Tr. 12
8507 B. Titchfield Ct., St. Louis 63123
Western Textile, Treecourt Industrial
Home VI3-7842 Business Y04-9400

Ingham, James M. (Joan) 1931 Tr. 198
9 Mayfair Road, St. Louis 63124
Ingham, White & Scherle, C.P.A.,
6548 Clayton Road
Home WY4-0437 Business ST1-5338

Jackson, Merle M. (Rose) 1951 Tr. 303
8500 Joseph Ave., St. Louis 63144
Magnus Metal National Lead Co.,
4153 Clayton Avenue
Home W02-8217 Business FR1-4030

James, Edward C. 1963 Tr. 668
5205 Wabada, St. Louis 63113
Sverdrup & Parcel & Assoc., 915 Olive
Home F07-3725 Business MA1-5771
(Ext 222)

Johnson, Roy W., Jr. (Barbara) 1946
611 Pamela Lane, St. Louis 63122
The Trane Co., 6510 Lansdowne Ave.
Home TA2-1487 Business W08-0850

Johnson, William H. (Norma) 1935 Ship 8
1941 Karlin Drive, St. Louis 63131
Johnson Industrial Supply Co.,
1941 Karlin Drive
Home TA2-0727 Business Y06-2420

Johnston, Jay K. (Georgia) 1946 Tr. 151
476 Ridge Ave., St. Louis 63119
Manhattan Coffee Co., 301 8th St.
Home W01-9022 Business CH1-8660

Jones, James R. (Gloria) 1945 Tr. 41
13052 Musket Ct., St. Louis
Wagner Elec. Corp., 6400 Plymouth
Home HE4-4466 Business PA1-5000

Jones, John L. (Susan) 1950 Tr. 41
7370 Carleton Ave., St. Louis 63130
Industrial Arts Instructor,
Maplewood Jr. High School
Home PA6-3290 Business MI7-0975

Jones, William E. (Frances) 1940 Tr. 329
1018 Curran Ave., Kirkwood 63122
Hornback & Hardie, 1465 S. Vandeventer
Home TA1-6754

K

Kaemmerlen, Bruce T. (Rosemarie) 1946 Tr. 315
27 Waverton Drive, St. Louis 63124
Kaemmerlen Electric, 2728 Locust
Home WY3-6968 JE5-2222

Kalbfleish, Edwin, Jr. (MaryAnn) 1933 Tr. 98
1713 North Ballas Rd., Des Peres 63131
U.S. Army Aviation Mat. Comd, Information
Officer, 12th & Spruce Sts., P.O. Box 209
Home Y05-0342 Business MA2-2256
(Ext 3086)

Kaminski, John Paul (Myrtle) 1933 Ship 4
6712 St. Louis Ave., St. Louis 63121
Erker Bros. Optical Co., 518 N. Grand
Home EV1-9719 Business JE3-5292

Keeler, Henry G. Jr. (Claire) 1933 Tr. 98
5 Fordyce Lane, St. Louis 63124
Keeler-Morris Prtg. Co., 2166 Hampton Ave.
Home WY3-5908 Business MI7-2600

Kern, Paul E., Jr. (Barbara) 1945 Tr. 61
2535 Eaton Rd., University Hgts., Ohio
DuPont Co., Wilmington, Delaware
Home 371-3007 Business 371-3007

Kirberg, Karl F. (Lorraine) 1931 Tr. 178
1011 Briarton Dr., Crestwood 63126
Hamiltonian Federal Savings & Loan
Assn., 3150 S. Grand Blvd.
Home W02-4477 Business PR6-4220

Kirberg, Leonard C. 1960 Tr. 683
1011 Briarton Dr., Crestwood 63126
McDonnell Co., Lambert St., Box 516
Home W02-4477 Business PE1-1212
(Ext 4851)

Kirk, Thomas W. (Vivian) 1930 Ship 8
16 Schultz Road, St. Louis 63122
Architecture Engineer, 16 Schultz Rd.
Home Y05-4292 Business Y05-4292

Kiselewski, Donald L. (Arline) 1950 Tr. 151
3105 St. Catherine, Florissant, Mo.
The Binkley Co., Warrenton, Mo.
Home TE8-4327 Business 456-3465

Kletzker, Thomas P. (Betsey) 1935 Tr. 41
3 Berkshire, St. Louis 63117
Central Engraving Co., 1307 Washington
Home WY1-1665 Business GA1-4436

Knickmeyer, Theodore E. (Mary) 1935
Tr. 197
2809 Darwin Ct., St. Louis 63121
St. Louis Board of Education,
Beaumont High, 3836 Natural Bridge
Home HA7-7778 Business FRI-1684

Knight, Newell S., Jr. (Janet) 1941 Tr. 13
7261 Kingsbury Blvd., St. Louis 63130
Warner Jenkinson Mfg. Co.
Home PA7-5446 Business JE1-1500

Knobbe, Len (Helen) 1943 Tr. 168
5811 S. Kingshighway, St. Louis 63109
Insurance Broker, 3338 Olive St.
Home FL2-5022 Business JE3-4610

Kohn, Nathan, Jr. (Catherine) 1928
Rt. 2, West Drive, Chesterfield, Mo.
Nathan Kohn, Jr. & Assoc., 9827 Clayton
Home KE2-3132 Business WY3-9696

Kohn, Robert E. (Martha) 1941 Tr. 90
52 Broadview, St. Louis 63105
Student
Home V03-3051

Kohn, Samuel I. (Marie) 1944 Tr. 95
23 Crabapple Ct., St. Louis 63132
Attorney, Kramer, Chused and
Kramer, 722 Chestnut Street
Home WY3-4716 Business CH1-8250

Kouri, John W. (Elizabeth) 1925 Tr. 77
1280 Brownell, St. Louis 63122
St. Louis Union Trust Co., 510 Locust
Home W01-3817 Business CE1-9300

Kraft, Ronald W. (Barbara) 1951 Tr. 34
2918 Chevron, St. Louis 63125
Monsanto Chemical Co., Monsanto, Ill.
Home TW2-6629 Business BR1-5805
(Ext 508)

Kurth, Guenther H. (Diana) 1932 Tr. 6
3 Highland Pl., St. Louis 63122
Union Electric Co., 321 N. 12th St.
Home TA1-7874 Business MA1-3222

L

LaBoyteaux, Richard (Susan) 1953 Tr. 457
953 Glenbrook Ave., St. Louis 63122
LaBoyteaux Ins. Agency, 9641 Manchester
Home TA1-6770 Business W01-1000

Lander, Aaron (Lorraine) 1935 Tr. 30
1124 Ridgelynn Dr., St. Louis 63124
Lander Bookbinding Co., 1630 Macklind
Home WY1-1501 Business PR3-0210

Lander, Jerrold (Harriet) 1955 Tr. 113
7723 Arthur Ave., St. Louis 63117
Student, Washington University
Home MI7-6698

Lang, Donald E. (Shirley) 1944 Tr. 430
10330 Badgley Dr., St. Louis 63126
Graybar Elec. Co., 600 S. Taylor Ave.
Home VI3-9040 Business JE1-4700

Langenberg, Fred G. (Catherine) 1927 Tr. 2
6608 Pershing Ave., St. Louis 63130
Air Brace Co., 620 Buder Bldg.
Home PA1-7685 Business CH1-6369

Langston, Perry C. (Eugenia) 1929 Tr. 44
7284 Maryland Ave., St. Louis 63130
Bank Bldg. Corp., 1130 Hampton Ave.
Home PA7-5208 Business MI7-3800

Lee, Charles A., Jr. (Betty) 1933 Tr. 1
225 Edwin Ave., St. Louis 63122
Attorney, 110 S. Central Avenue
Home Y06-4633 Business PA5-8700

Leutwiller, Lester G. (Louise) 1922 Tr. 6
16 Overbrook Drive, St. Louis 63124
Pet Incorporated
Home W01-8295 Business MA1-5400

Leutwiller, Robert L. (Lelie) 1957 Tr. 489
16 Overbrook Drive, St. Louis 63124
Ensign, USN, San Diego, California
Home W01-8295

Levinson, Richard W. (Horty) 1945 Tr. 90
832 Charlesgate Dr., Olivette, Mo.
Shane Investigative Agency Inc.
Home WY4-7260 Business PA1-6900

Levinson, William S. (Ellen) 1941 Tr. 90
6 Speode Woods, St. Louis 63141
Shane Detective Agency, 8230 Forsyth
Home HE2-5718 Business PA1-6900

Lewis, Leonard W. (Jane) 1927 Tr. 301
1085 Liggett Blvd., St. Louis 63126
Accounting Service, 1085 Liggett
Home W01-0243 Business W01-0243

Littmann, Ellis C. (Roslyn) 1925 Tr. 152
7 Country Estates, Frontenac 63131
Nixdorff-Krein Mfg. Co., 916 Howard
Home LI2-1410 Business GA1-2676

Livingston, William M. (Janet) 1933 Tr. 90
74 Arundel Place, St. Louis 63105
St. Louis Paper & Box Co., 3843 Garfield
Home PA5-0417 Business JE1-7900

Loewenstein, Hal B. 1952 Tr. 87
8600 Delmar, St. Louis 63124
Loewenstein Business Forms, 8600 Delmar
Home PA1-3545 Business WY4-3545

Loewenstein, Mel J. (Joan) 1949 Tr. 87
8511 Crixdale, University City 63130
St. Louis Area Council, BSA, 505 Arcade Bldg.
Home WY4-1186 Business CH1-7856

Lohse, Arthur J. (Myrtle) 1939 Tr. 174
3402 Macklind Ave., St. Louis 63139
Main U.S. Post Office, 1720 Market St.
Home FL2-2511 Business CE1-7920
(Ext 325)

Londe, Alan M. Capt. (Dorothy) 1949 Tr. 90
3061B Concord, Hill A.F.B., Ogden, Utah
2791st Hospital, Hill A.F.B., Utah 88401
Home 825-0003 Business 777-3033

Lynch, Raymond E. 1955 Tr. 555
6933 Leedale Dr., St. Louis 63121
McDonnell Aircraft Corp.,
Dept. 276, Box 516, St. Louis
Home EV5-4263 Business PE1-2121
(Ext 2597)

M

- Mabry, D.B. (Elise) 1948 Tr.49
420 Edgewood Dr., St. Louis 63105
Moss-American, Inc., 500 Security Bldg.
Home VO3-4515 Business GA1-4880
- Mackey, Clifford J. (Anna Marie) 1942 Tr.33
4745 Milentz Ave., St. Louis 63116
Retired -U.S.C.S.
Home FL3-5764
- Mahoney, John H. (Lynne) 1953 Tr.12
620 Pearl, St. Louis 63122
Sales Rep. U.S. Steel, 515 Olive St.
Home YO6-3918 Business GA1-6464
- Mange, Frankin E. (Barbara) 1942 Tr.90
18 Granada Way, St. Louis 63124
Petrolite Corp., 369 Marshall Ave.
Home WY1-5543 Business W01-3500
- Manheimer, Ben P. (Margot) 1947 Tr.90
751 LePere (Apt. C), St. Louis 63132
Ben Manheimer, 2319 Hampton Ave.
Home WY4-7665 Business MI5-5007
- Martin, Leonard C. (Alice) 1947 Tr.314
22 Joy Avenue, St. Louis 63119
Webster Groves Trust Co.,
75 W. Lockwood Avenue
Home W02-1425 Business W01-2400
- Martin, Raymond A. (Frances) 1941
138 West Cedar Ave., St. Louis 63119
Missouri Pacific RR Co., 210 N. 13th
Home W01-1804
- McCoy, John P. (Sharon) 1950 Tr.246
1280 Kiowa Drive, St. Louis 63132
Southwestern Bell Telephone Co.,
135 No. Lindbergh
Home WY4-1440 Business WY4-9244
- McDade, William F. (June) 1934 Tr.31
7 Chafford Woods, St. Louis 63144
Judd-McDade Advertising Agcy. 317 N. 11th
Home W01-1730 Business CH1-5888
- McDermott, John J. (Jane) 1941 Tr. 236
1600 Andrew Dr., St. Louis 63122
Siteman Organization, 111 S. Bemiston
Home YO5-1136 Business PA5-6200
- McNamee, Bernard J. (Katherine) 1960
Tr.29
6823 Knoll, Berkeley, Mo. 63034
Fisher-Body, Union & Natural Bridge
Home JA4-2812
- Mees, Donald W. (Pat) 1947 Tr.174
3425 Brunswick Dr., St. Louis 63031
Berkeley Jr. High School, 6033 Caroline
Home TE8-6683 Business JA1-5573
- Meier, Arthur C. II 1954 Tr.83
12th & Spruce St., St. Louis 63103
HQ XI, U.S. Army, Captain
Home Business MA2-3398
- Merritt, Allen (Carolyn) 1931
954 Tuxedo Blvd., St. Louis 63119
Globe Democrat, City Desk
Home W02-3097 Business GA1-1212
- Meyers, Robert F. (Jane) 1932 Tr.90
924 Alanson Dr., St. Louis 63132
Dynacraft Inc., 5000 Connecticut
Home WY4-9099 Business PR2-9818
- Michenfelder, Albert (Jill) 1941 Tr.315
221 Hawthorne Ave., St. Louis 63119
Attorney, Suite 606 Clayton Tower
Home W02-7550 Business PA7-5822
- Miller, James B. (Helen) 1950 Tr.90
1059 Barry Court, Kirkwood 63122
St. Louis Area Council B.S.A.,
505 Arcade Building
Home TA2-4031 Business CH1-7856
- Mizes, Herb (Thelma) 1945 Tr.90
6545 Alder Ave., Berkeley 63134
Anheuser-Busch, Inc.
Home JA1-7701 Business PR3-3100
(Ext 2796)
- Molden, Charles A. (Beverlee) 1938 Tr.38
36 Bellerive Acres, St. Louis 63121
Physician, 7520 Natural Bridge
Home CO1-9454 Business EV5-4555
- Moller, Robert L. (Audrey) 1935 Tr.308
717 McLain Lane, St. Louis 63122
Suburban Cleaners, 24 N. Gore Ave.
Home TA1-1065 Business W01-1330
- Moller, Glenn L. (Anne) 1931 Tr.308
298 Elm Avenue, St. Louis 63122
Attorney-Moller, Telent and
Kueltham, 2067 Railway Exch. Bldg.
Home YO6-4167 Business CH1-3176
- Montague, Joseph M. (Audrey) 1943 Tr.90
7333 Amherst, St. Louis 63130
Maritz Inc., 4200 Forest Park Blvd.
Home PA7-4954 Business JE5-1800

Morris, Herbert A. (Patricia) 1954 Tr. 352
45 Austin Place, St. Louis 63122
Flo-Products Co., Box 506, Hazelwood
Home Y05-6816 Business PE1-1010

Muennig, Phillip C. (Joan) 1943
c/o Child Evangelism Fellowship,
International Inc., P.O. Box 1156,
Grand Rapids, Michigan 49501
Foreign Missionary

Murray, Daniel J. (Mary) 1952 Tr. 363
314 Altus Place, St. Louis 63122
IBM, 515 Olive Street
Home TA2-2434 Business OL2-3400

N

Neuwirth, Alois, Jr. (Grace) 1940 Tr. 143
14897 Parlier Dr., Bridgeton 63044
McDonnell Aircraft Corp.
Home TH5-3542 Business PE1-2121
(Ext 2929)

Nicholson, Terry (Georgia) 1929 Tr. 5
100 N. Hanley Rd., St. Louis 63105
Real Estate Broker
Home PA5-1787 Business PA5-1787

Nussbaum, Stanley (Margaret) 1931 Tr. 6
9360 Old Bonhomme Rd., St. Louis 63124
Berland Shoe Co., 4241 Folsom
Home WY3-2022 Business T05-1911

O

Orchard, Edgar L. (Donna) 1940 Tr. 304
#1 Robindale Dr., St. Louis 63124
Ajax Corrugated Paper Co., 2700 Wagner
Home WY4-3111 Business PE9-5800

Orr, William F. (Marie) 1934 Tr. 13
157 Henning Dr., R.R. 4, Chesterfield
63017
Monsanto Chemical Co., 800 N. Lindbergh
Home HE4-4996 Business WY3-1000

P

Pariera, Morton D. (Dora) Tr. 90
511 West Polo Dr., St. Louis 63105
Physician, Jewish Hospital,
216 S. Kingshighway Blvd.
Home PA1-8882 Business F07-8080

Peschke, Adolph E. (Grace) 1935 Tr. 209
1112 Drayton Court, St. Louis 63119
U.S. Army, Aviation & Surface
Material Comm., 12th & Spruce Sts.
Home W01-3024 Business MA2-2972

Peterson, Leroy W. (Edith) 1928 Tr. 7
22 Portland Drive, St. Louis 63131
Physician, Queeny Tower Bldg.
Home HE2-2520 Business F07-3233

Pfabe, Kort K. (Henriette) 1940 Tr. 62
9270 Vauk Lane, St. Louis 63126
Carter Carburetor Corp.,
2840 N. Spring Avenue
Home VI2-2509 Business JE1-2950

Pfeffer, Philip Maurine (Pamela) 1958
Tr. 262
2412 Pierce Ave., Apt. 702, East
Lewis House, Nashville, Tenn.
Student
Vanderbilt University Grad. School

Phemister, Robert I. (Nora) 1925 Tr. 14
458 Parkwoods Ave., St. Louis 63122
Monsanto Chem. Co., 800 N. Lindbergh
Home Y05-6831 Business OX4-1000

Pierson, J. L. 1944 Tr. 362
7551 Byron Place, St. Louis 63105
Attorney-Lewis, Rice, Tucker, Allen
and Chubb, 638 Piere Laclède Bldg.
Home V03-4321 Business PA6-1511

Pohl, William J. (Auroa) 1941 Tr. 189
10649 Charrette Drive, Affton 63123
Union Elec. Corp., 315 N. 12th St.
Home VI3-1382 Business MA1-3222
(Ext 2320)

R

Rader, Irving L. (Lena) 1942 Tr. 90
92 Burning Trees Drive, St. Louis 63017
Rader Studio, 1000 Washington Ave.
Home H09-3323 Business MA1-0366

Rahmberg, Charles A. (Erline) 1935 Tr. 33
515 W. Northgate Rd., Peoria, Illinois
Mass. Mutual Life Ins. Co.,
Security Savings Bldg., Peoria, Ill.
Home 691-1191 Business 673-8131

Rasmussen, W.D., Jr. 1938 Tr. 243
2218 Tower Grove Ave., St. Louis 63110
Sefton Can & Plastics Div., Container
Corp. of Am., 3275 Big Bend Blvd.
Home PR6-7189 Business MI7-0400

Reckenberg, Charles J. (May) 1933 Tr. 281
6980 Hancock Ave., St. Louis 63139
Reck & Mays Mkt., 6980 Hancock Ave.
Home ST1-8050 Business MI7-1179

S

Recktenwald, Paul F. (Jessie) 1939 Tr.9
132 Edgeworth Ave., St. Louis 63042
McDonnell Company
Home PE9-9621 Business PE1-2121

Reiman, Alan (Dorothy) 1942 Tr.90
8318 Cornell, University City 63132
General Installation Co., 950 Kingsland
Home WY4-7079 Business PA5-6880

Remmert, Robert C. (Nancy) 1951 Tr.277
312 St. Louis Ave., St. Louis 63135
Walter Goerss, Jewelers, 721 Olive St.
Home JA2-3718 Business CH1-8636

Reniker, Everett T. Col. (Gene) 1936
9308 Maybrook Place, Alexandria, Va.
22309

Repp, Walter W., Jr. (Rita) 1935 Tr.249
9116 Desmond Dr., St. Louis 63126
Ulmer Equip. Co., 214 S. Kirkwood Rd.
Home VI3-8344 Business Y05-4653

Rethemeyer, Arthur E. (Susan) 1939 Tr.150
7907 Elton, St. Louis 63123
Rethemeyer Coffee Co., 1711 N. Broadway
Home PL2-4864 Business CE1-0596

Roman, Melvin F. (Adele) 1929 Tr.87
7411 Byron Place, St. Louis 63105
Roman Adv. Co., 3615 Olive St.
Home PA5-3512 Business OL2-6300

Rosen, Harry 1961 Tr.87
6043 Pershing, St. Louis 63112
Student, Washington University
Home PA1-6454

Rosen, Jack B. (Renee) 1949 Tr.90
8111 University Dr., Clayton 63105
Dentist, 7247 Delmar Blvd.
Home PA7-0440 Business PA7-1711

Ross, Donald K. (Peggy) 1939 Tr.119
9 Crosswinds, St. Louis 63132
Ross & Baruzzini, Inc., 7912 Bonhomme
Home WY3-9472 Business PA5-2242

Ross, George Benham (Shirley) 1931 Tr.31
3 Villa Lane East, St. Louis 63132
Nat'l. Federation of Independent
Business, Washington, D.C. 20006
Home WY3-5134

Rush, George F. (Jean) 1934 Tr.8
8692 General Grant Ln., St. Louis 63123
MidCity Plmb. & Engr. Co., 708 Hanley
Industrial Court
Home VI3-5936 Business MI4-1616

Sachs, Leroy (Sylvia) 1934 Tr.30
2011 Urban Drive, St. Louis 63144
Teacher, Clayton High School
Home W02-6677 Business PA6-2550

Sachs, Richard M. 1961 Post 339
2011 Urban Dr., St. Louis 63144
Student, Northwestern Univ.
Home W02-6677

Samisch, G. Myron (Jean) 1934 Tr.69
3 Creekside Lane, Creve Coeur 63141
Manufacturer's Representative (Furn.)
Home HE2-8013 Business HE2-8013

Schaefer, Kenneth M. (Miriam) 1935 Tr.308
1775 Dougherty Ferry Rd.,
St. Louis 63122
Sverdrup & Parcel & Assoc., 915 Olive St.
Home Y06-8741 Business MA1-5771

Schick, Roy J. (Dannie) 1934
449 Elm St., Glendale 63122
St. Louis Union Trust Co., 510 Locust
Home Y06-4991 Business CE1-9300
Sta. 571

Schiffman, John A., Jr. (Althea) 1933 Tr.308
9746 Big Bend Blvd. St. Louis 63122
Jon-Al Enterprises, Inc.,
9746 Big Bend Blvd.
Home Y06-3336 Business Y06-3336

Schiffman, Julius S. (Marge) 1933 Tr.308
22 Elm Ave., St. Louis 63122
Nooter Corp., 1400 S. 3rd St.
Home TA1-1954 Business MA1-6000

Schuchardt, Arthur C., Jr. (Mary Lou)
1943 Tr.91
10609 Ayleford Dr., St. Louis 63136
Chevrolet Div. General Motors Corp.,
3809 N. Union Blvd.
Home UN7-7256 Business EV3-2250

Schuchardt, Robert 1945 Tr.200
5046 S. 38th St., St. Louis 63116
Carl Bajohr Co., 5052 S. 38th St.
Home IV7-2799 Business HU1-2710

Schumacher, F. Carl (Althea) 1924 Tr.17
9 Southmoor Dr., St. Louis 63105
Hickey-Mitchell Co., 4242 Lindell
Home PA1-5456 Business OL2-1414

Schwartz, Richard E. (JoAnn) 1955 Tr.320
Public Service Commissioner,
Jefferson City, Missouri
Attorney, Jefferson City, Missouri
Home 635-3904 Business 636-3111

Schwartz, Robert S. 1939 Tr.102
725 Skinker Blvd., St. Louis 63105
Salesman
Home PA1-2948

Schwarz, Paul C. (Martha) 1933 Tr. 308
12611 West Watson Rd., St. Louis 63127
Schwarz Studio, 1809 Lafayette Ave.
Home Y04-9975 Business PR1-1900

Schweizer, Bert II (Elizabeth) 1940
Tr.90
8315 Delmar, University City 63124
Helen Wolff Shops, 8131 Maryland Ave.
Home WY3-6714 Business PA1-8300

Seal, Carl J., Jr. (Alice) 1940 Tr.35
155 St. Daniel Lane, Florissant 63031
Emerson Elec. Corp., 8100 W. Florissant
Home WA1-2778 Business CO1-1800
Ext. 2346

Sebright, Russ D. 1942 Tr.97
5740 Ramsey, St. Louis 63136
Sebright & Co., 7120 W. Florissant
Business CO1-0055

Seckel, Arthur O. (Patricia) 1952 Tr.89
3950 Belcroft, Florissant 63031
Rapid Heating & Appliance Co.
Home TE7-0864 Business TE7-0864

Seelig, Sigmond (Estelle) 1936 Tr.90
16 Beverly Drive, St. Louis 63132
Stifel, Nicolaus & Co., 8001 Maryland
Home WY3-6297 Business VO3-0330

Seger, Charles F., III 1957 Tr.178
9601 Castanet Ct., St. Louis 63126
U. of Mo. at Rolla, Box 667, Rolla, Mo.
Home VI2-0499 Business EM4-4841

Senniger, Stuart N. (Molly Jean) 1934
Tr.74
469 Algonquin Place, St. Louis 63119
Attorney, Koenig, Senniger, Powers
and Leavitt, 818 Olive St.
Home WO2-2707 Business CE1-0109

Sibley, Alden K., Major General
HQ XI U.S. Army Corps, 405 S. 12th St.
Business MA2-3398

Silk, Martin 1940 Tr. 90
137 Pebble Acres Ct., St. Louis 63141
Silk Realty Co., 5872 Delmar Blvd.
Home HE4-5555 Business PA5-6611

Silver, Arthur (Barbara) 1941 Tr.90
7 Morwood Lane, St. Louis 63141
Mfg. Representative, United Furniture
Corp.
Home HE2-2640

Simpkins, Ronald William (Joan) 1955 Tr.121
4802 Orange Blossom Ln.,
Hazelwood, Missouri 63042
Catholic Knights of America Ins. Co.
6203 Gravois Avenue
Home PE9-1728 Business FL1-1029

Skelly, Frank H. (Helen) 1922 Tr.38
310 Russell Blvd., Columbia, Mo. 65201
Colonel, U.S. Army, Retired
Home 314-445-4756

Smith, Charles D. (Eugenia) 1931 Tr.232
662 Fairview Ave., St. Louis 63119
Heitz Machine & Mfg. Co.,
12200 Dorsett Road
Home WO2-6956 Business HE2-6100

Smith, Eric W., Jr. (Micki) 1930 Tr.7
380 N. Sappington Rd., St. Louis 63122
Smith & Entzeroth, Inc. 7701 Forsyth
Home YO5-8416 Business VO3-3767

Solomon, Donald A. (Ruth) 1945 Tr.90
7748 Burr Oak Ln., St. Louis 63130
Small Fry Fashions, St. Charles, Mo.
Home PA5-5663 Business RA4-5474

Sophir, Jack J. (Dorothy) 1929 Tr.102
9120 Meyer Lane, Crestwood 63126
Gateway Paint Co., 826 S. 18th St.
St. Louis, Missouri
Home VI3-2908 Business CE1-5708

Spector, Jerome J. (Marion) 1929 Tr.87
4 Clayprice Court, St. Louis 63124
Binkley Corp., Warrenton, Mo.
Home WY4-0732 Business GL6-3455

Spinks, Edward C. (Mary) 1936 Tr.318
9835 Hudson Ave., St. Louis 63119
Union Elec. Co., 315 N. 12th St.
Home WO2-4669 Business MA1-3222
Sta.2676

Spratt, John S., Jr. (Beverly) 1945 Tr.9
105 S. Glenwood, Columbia, Mo. 65201
Surgeon, Ellis Fischel State Cancer
Hospital, Columbia, Mo.
Home 443-3883 Business 443-3103

Spurr, Raymond H. (June) 1934 Tr.147
4319 Nelson Drive, St. Louis 63120
Orchard Paper Co., 3914 Union Blvd.
Home EV2-8264 Business EV5-8400
Sta.306

Squires, Zane O., Sr. (Susie) 1951 Post 209
3536 Giles Ave., St. Louis 63116
Comprehensive Designers, Inc.,
7034 W. Florissant
Home PR1-4056 Business EV5-4222

Stalzer, Theodore R. (Gerry) 1936 Tr. 324
589 Brookhaven Court, St. Louis 63122
McDonnell Company
Home TA1-7789 Business PE1-2121
Sta. 4657

Stauffer, Dickson S., Jr. (Mette) 1930 Tr. 5
700 West Jewell Ave., St. Louis 63122
International Shoe Co., 1509 Washington
Home Y04-8490 Business CH1-4000
Sta. 215

Steckhan, Donald (Rose) 1961 Post 212
1940 Berra Court, St. Louis 63110
Teacher, Hancock Place School Dist.,
229 W. Ripa
Home ST1-5628

Steele, Donald (Nancy) 1945 Tr. 90
11 The Knolls, St. Louis 63141
Kohlmeyer & Co., 7745 Carondelet, 63105
Home HE2-5193 Business VO3-9400

Steinbeck, James Melton 1961
4500 Holman Lane, St. Louis 63134
McDonnell Aircraft
Home HA7-6386 Business JA1-2121
Sta. 2598

Steinbeck, John Allan 1958 Tr. 531
4500 Holman, St. Louis 63134
Lieutenant, U.S. Army
Home HA7-6386

Steiner, Chester A. (Claire) 1938 Tr. 90
6 Pricemont Dr., St. Louis 63132
St. Louis Union Trust Co., 501 Locust
Home WY4-9447 Business CE1-9300
Ext. 544

Steiner, Harry, Jr. (Henrietta) 1937 Tr. 90
7391 Norwood Ave., St. Louis 63130
Stix, Baer & Fuller (Westroads)
Home PA1-0392 Business PA5-7600

Steiner, Jerome M., Sr. (Marjorie) 1922
Tr. 54
900 S. Hanley Road, St. Louis 63105
Attorney, Steiner & Fenlon,
8003 Forsyth Boulevard
Home PA1-3344 Business PA1-4378

Steiner, Jerome M., Jr. 1954 Tr. 21
5677 Waterman Ave., St. Louis 63112
Student, Washington Univ. Law School
Home PA1-3344

Steiner, Leroy M. (Rose Mary) 1944 Tr. 77
3520 St. Louis Ave. St. Louis 63106
30 Glen Cove Dr., Chesterfield, Mo.
Attorney, 3520 St. Louis Avenue

Stewart, Robert P. 1953 Tr. 49
3810 Audley, Houston, Texas 77006
Home Business

Still, Palmer (Lois) 1931 Tr. 71
9415 Old Bonhomme Rd, St. Louis 63132
Manufacturer's Agent
Home WY3-2077 Business WY3-2077

Suffian, Milton (Harriet) 1942 Tr. 119
709 Timber Run, St. Louis 63141
Attorney, 722 Chestnut St.
Home HE4-3768 Business CE1-2020

T

Taft, Timothy N. 1956 Tr. 324
2000 Rieth Terr., St. Louis 63122
Medical Student
Home TA1-5454

Thein, Ken (Dorothy) 1939 Tr. 106
#2 Wrenwood Ct., St. Louis 63119
Ken Thein Signs, 535 Flora Ave.
Home W02-5527 Business W01-2610

Thomas, Robert F. 1956 Tr. 11
St. John's Mercy Hospital
St. Louis University Medical Student
Home HE2-6500

Trefts, William H. (Janet) 1935 Tr. 180
410 Country Hills Dr., St. Louis 63119
Sodemann Heat & Power Co.,
1737 Macklind Ave.
Home W01-8699 Business PR6-0600

Tremayne, Bertram W., Jr. (Clara) 1931 Tr. 8
58 Frederick Lane, St. Louis 63122
Attorney, Tremayne, Joaquin, Lay & Carr
Shell Bldg., 212 S. Central
Home W01-5138 Business VO3-4151

Treu, Melvin E. (Nancy) 1945 Tr. 33
1235 Roxton Drive, St. Louis 63137
Unidynamics, 472 Paul Ave.
Home UN7-3309 Business JA2-1620
Ext. 643

U

Uthoff, August F. (Sue) 1938 Tr.14
122 St. Georges Pl., St. Louis 63119
Board of Education,
6301 Knox Ind. Dr.
Home W01-1281 Business MI4-1525

Uthoff, Stephen Alan 1960 Tr.304
122 St. Georges Pl., Webster Groves 63119
Hackmann Construction Co.
Home W01-1281

V

Vance, James M. (Sara) 1941
220 Orchard Ave., St. Louis 63119
Accounting Equip.Mfgr.,
122 A. W. Lockwood Ave.
Home W02-8465 Business W02-9277

Vollmar, Lewis C. (Olive) 1940 Tr. 153
6995 Washington Ave., St. Louis 63130
Vollmar Bros. Const. Co.
711 N. Grand
Home V02-1757 Business OL2-1776

W

Wagner, Bernard C. (Christine) 1939 Tr.41
20 Black Oak Dr., St. Louis 63127
B. C. Wagner, General Contractor,
425 DeBaliviere Ave.
Home VI3-1051 Business V03-1418

Walz, H. Frederick (Jo) 1935 Tr.68
229 McDonald Pl., St. Louis 63119
Alpha Tank Co., 5001 S. 38th St.
Home W01-4858 Business HU1-6790

Washauer, Louis H. (Jan) 1943 Tr.90
8008 Walinca Dr., St. Louis 63105
Dow Chemical Co., Madison, Illinois
Home PA1-0326 Business GL2-5190

Watson, John F. (Jean) 1947 Tr.70
836 S. Sappington, St. Louis 63126
Union Elect. Co., 721 S. 18th St.
Home W02-9970 Business MA1-3222
Ext. 2586

Weil, Henry A. (Clarice) 1922
806 Audubon Dr., St. Louis 63105
State Mutual Life, 407 Pine St.
Home PA5-3351 Business MA1-5540

Weiss, Albert L. (Mary) 1923 Tr.5
207 Dobbin Rd., St. Louis 63119
Attorney, Thomas, Busse, Weiss, Cullen
& Godfrey, 418 Olive St.
Home W01-6227 Business CH1-4515

Wells, C. Robert (Peggy) 1932 Tr.8
708 West Jewell Ave., Kirkwood 63122
St. Louis Country Day School,
425 N. Warson Road 63124
Home TA1-5109 Business WY3-5100

Werner, Charles A. (Mary Louise) 1943
Tr.90
7614 Teasdale, St. Louis 63130
Lawyer, Schuchat, Cook & Werner,
705 Olive St.
Home V03-3350 Business MA1-2626

Werner, Morton T. (Marilyn) 1942 Tr.90
11 Ridgemoor Dr., St. Louis 63105
Lawton, Byrne, Bruner Ins. Agency,
401 Pine St.
Home PA1-5787 Business MA1-5543

Weseloh, Winston H. (Daisy) 1928 Tr.125
5723 Holly Hills Ave, St. Louis 63109
St. Louis Police Dept., 1200 Clark St.
Home VE2-0277

Westall, George B. (Betty) 1941 Tr.44
8832 Wood Park Dr., Sunset Hills 63127
Sears-Westall, 4053 Lindell Blvd.
Home VI3-9317 Business W08-1260

Wetzel, Charles E., Jr. (Nancy) 1946 Tr.362
420 St. Edward Lane, Florissant 63033
Boatmen's National Bank, 300 N. Broadway
Home TE7-0312 Business GA1-5200
Sta.210

Whitener, Robert W. (Sally) 1945 Tr.77
660 Marston, Glen Ellyn, Ill. 60137
Coronet Industries, 13174 Mdse. Mart
Chicago, Ill.
Home 312-469-9556 Business 312-467-4750

Wiedershine, Leonard J. (Evelyn) 1935
Tr.189
10239 Thornwood Dr., Ladue 63124
Physician & Psychiatrist,
4511 Forest Park Blvd.
Home WY3-6669 Business FO1-0037

Wightman, Jerry (Barbara) 1947 Tr.28
732 Timber Trail, St. Louis 63131
The Wightman Agency, 7710 Carondelet
Home Y06-8558 Business PA6-2340

Wilkening, Orlie H. (Helena) 1928 Tr.88
46 Wildwood Dr., R.R.#1 Pacific, Mo.
63069
Mo. Consumer Finance Assoc.,
225 S. Meramec Ave.
Home CLearwater 7-3808 Business
V03-5141

Windhorst, William F. (Myrtle) 1924 Tr.52
12808 Bellerive Estates Dr.,
St. Louis 63141
C.P.A., 721 Olive Street
Home HE4-2494 Business CE1-7694

Winney, W. Oliver (Dorothy) 1931 Tr.178
5540 Keller Rd., St. Louis 63128
Mehlville School Dist., 3120 Lemay Ferry
Home VI3-4614 Business TW2-5000

Wischmeyer, Kenneth E. (Janice Laura)
1924 Tr.23
11345 Mosley Lane, St. Louis 63141
Architect, 317 N. 11th, St. Louis
Home HE2-6861 Business CE1-4704

Witte, Donald M. (Rosemary) 1944 Tr.158
534 Beaucaire Dr., St. Louis 63122
Attorney, 2330 S. Brentwood Blvd.
Home Y06-3604 Business W01-9825

Wolff, Ray W. 1958 Tr.233
4925 Parker Road, Florissant, Mo.
Bendy Eng. Co., 1530 Page Ind. Blvd.
Home TUrner 6-0701 Business HA9-7911

Wuertenbacher, Harry, Jr. (Bernadine)
1942 Tr.153
13 Upper Ladue, St. Louis 63124
Union Electric Co.
Home WY3-3618 Business MA1-3222
Ext.2076

Y

Yaloures, Paul P. (Marie) 1961 Tr.166
1555a Tamm Ave., St. Louis 63139
Scullin Steel Co., 6691 Manchester
Home MI7-4181 Business MI5-0400

Z

Zekind, Harry (Thelma) 1922
815 Fernview, St. Louis 63141
Northwestern Mutual Life Ins. Co.,
418 Olive Street
Home TR8-7079 Business CE1-3931

Zell, Clifford F., Jr. (Jinger) 1939
Tr.343
1111 S. Warson Road, St. Louis 63124
Vahalla Chapel of Memories,
7600 St. Charles Rock Road
Home WY3-5409 Business PA1-4900

Zucker, Harvey (Ruth) 1958 Tr.87
6330 Northwood Ave., St. Louis 63105
Harvey Zucker Neckerchief Co.
P. O. Box 11373, 20 N. Bemiston,
Clayton, Missouri 63105
Home PA5-9769

Zucker, Steven 1959 Tr.87
6330 Northwood Ave., St. Louis 63105
Student
Home PA5-9739

ROSTER ADDENDUM

Anders, Vernie G.Jr.(Annie)1965 Tr 611
6306 Witsell, St. Louis 63134
Finance/Mortgage Analyst, Land
Clearance Authority, 20th & Olive
Home JA2-1460 Business V03-8833

Ashen-Brenner, Sidney, Jr.(MaryJane) 1939
Tr 2
949 East Essex, Glendale 63122
Photographer, Ashen-Brenner Studios
114 River Roads Shopping Center
Home Y05-3888 Business UN7-0700

Babcock, Joseph R.(Barbara Ann)1939 Tr 68
5501 Holly Hills, St. Louis 63109
Plumber, Archway Plumbing, 1015 Locust
Home FL3-8963

Bailey, Drennan (Joan) 1939 Tr 49
46 Countryside Lane, St. Louis 63131
Surgeon, 6356 Clayton Road 63117
Home Y05-6692 Business MI7-3834

Brereton, Jack (Peggy) 1935 C 3
719 Sherwood Dr., Webster Groves 63119
Consolidated Chemical Co., 1470
Vandeventer 63110
Home W01-6648 Business JEl-7282

Brodtrick, William R.(Jane)1963 Tr 245
6908 Marquette, St. Louis
U. S. Post Office
Home ST1-7791

Frazier, Carey L. Jr., (Merrill) 1946
Langdale, Alabama
252 Pine Tree Lane, Ballwin, 63011
Salesman, U.S. Steel, 515 Olive
Home CA7-1120 Business GA1-6464

Friedrich, E. William 1956 Tr 56
4305 S. 38th St., St. Louis 63116
Medical Student, Washington University
Home FL3-6542 Business F07-6400

Garvey, Robert (Mary) 1940 Tr 35
9752 Margo Ann Lane, St. Louis 63134
McDonnell Corporation, St. Louis
Home HA9-2040 Business PE1-2121
(Ext 3603)

Glass, Ely (Doris) 1937 Tr 11
700 Engelton Dr., Olivette
Curley Enterprises, 700 Engelton Drive
Home WY4-0054 Business VI3-0515

Gram, Herman E. (Suzanne) 1930 Tr 54
26 Broadview Dr., Clayton 63105
Merchant, Standard Home Furnishers,
500 E. Broadway, Alton, Illinois
Home PA7-5223 Business 465-4205

Greditzer, Harry G. Jr. (Beatrice) 1930
Tr 90
30 Huntleigh Downs, Frontenac
Production Manager, Alton Boxboard Co.
Pacific, Missouri
Home HE2-5766 Business CA7-1100

Hammer, Ludwig F. (Corinne) Tr 52
9216 Saddlebrook, St. Louis County
Industrial Engineer, Procter & Gamble,
169 East Grand, St. Louis
Home VI3-5395 Business MA1-8292

Hayden, Melvin Jr.(Carolyn)1956 Post 114
1550 Harkee Drive, Florissant
U. S. Post Office, 18th & Market
Home TE1-2819 Business CE1-7920

Hayden, Sterling 1957 Post 114
8747 N. Braodway, St. Louis
Teacher, Roosevelt High, 3230 Hartford
Home UN7-0498 Business PR1-6020

Hely, Robert Edward (Charlotte)1935 Tr98
1507 Bellevue Ave., Richmond Heights
Te-Co., Inc., 400 Russell Boulevard
Home ST1-0590 Business PR1-0700

Holmes, Dennis (Jinx) 1952 Tr 317
9473 Arban Drive, Crestwood 63126
Account Executive, Gardner Advertising
915 Olive, St. Louis
Home VI2-2921 Business CE1-3200
Ext 372

Huey, Don (Ruth) 1937 Tr 106
2520 Furlong Dr., Florissant 63033
Electrical Contractor, Fremder Elec.
Company, 4522 Delmar
Home TE1-8877 Business F01-6800

Jacobsen, Eric K.(Dorothy) 1951 Tr 97
17 Stoney View Lane, Creve Coeur, 63141
Facilities Engineer, Monsanto Co.
800 N. Lindbergh Boulevard
Home TR2-7867 Business OX4-6980

Kaminsky, Harold (Edna) 1923 Tr 86
959 Abbeville, University City 63130
Attorney, 6635 Delmar, Univ. City
Home V03-6335 Residence V03-7111

Keeler, Henry G. Jr.(Claire)1933 Tr 98
5 Fordyce Lane, St. Louis 63124
President, Keeler-Morris Printing Co.,
2166 Hampton Avenue 63139
Home WY3-5908 Business MI7-2600

Mueller, Werner A. 1945 Tr 84
Insurance Agent, Mueller & Milford
7 North 7th, St. Louis
Business GA1-4251

Nash, Wesley K. (Maxine) 1923 Tr 5
476 W. Lockwood, St. Louis 63119
Advertising, Wesley K. Nash Co.
3638 Olive Street
Home W01-7518 Business OL2-7747

Neukum, William Jr. (Mary Louise) 1937 Tr 166
1012 Kuhs Place, St. Louis 63117
Works Acct. Union Corp., 8300 Valcour
Home MI5-0326 Business VE2-1201

Polito, Robert E. (Virginia) 1933 Tr 122
7269 Arlington Dr., Richmond Heights 63117
Supervisor, Kaemmerlën Electric Co.,
2728 Locust Street, 63103
Home MI5-7571 Business JE5-2222

Presley, Judd B. (Margaret) 1929 Texas
25 Log Cabin Drive, St. Louis 63124
Regional Sales Manager, The Prophet Co.
Home WY3-9482 Business WY3-9482

Qualy, Robert B. (Betty) 1939 Wisconsin
General Agent, Northwestern Mutual
Life Ins., 418 Olive Street
Home WY4-0637 Residence CE1-3931

Radican, Joe L. 1953 Malden, Mo.
1020 Teson Rd., Apt A, Hazelwood 63042
Computer Programmer, McDonnell
Automation Center
Home TE1-6239

Reiman, Alan (Dorothy) 1942 Tr 90
8318 Cornell, University City 63132
Engineer, General Installation Co.,
950 Kingsland, University City
Home WY4-7079 Business PA5-6880

Schilling, Bert L. (Wilma) 1937 Rover 4
1665 Calais Ct., Warson Woods
Aerospace Engineer, McDonnell Co.,
Box 66, St. Louis
Home TA1-1781 Business PE1-2121
(Ext 6946)

Schorsch, Jerome (Adrienne) 1944 Tr 90
808 Kingsland, University City
Pharmacist, The Pfeiffer Co.,
3965 Laclede
Home PA6-0850 Business FR1-3000

Shucart, James W. (Becky) 1958 Tr 45
1641 E. Swan Circle, Brentwood
Teacher, Richmond Heights School
District, 7539 Manchester Road
Home W01-0974

Theurer, Herman (Geraldine)
3927 Trotwood Pl., St. Louis
Plumber, Consolidated Engineers
Home TW2-8954 Residence EVI-5100

Vollmar, Joseph E. Jr. (Helen) 1935
Tr 153
106 Fair Oaks Dr., St. Louis 63124
Vollmar Brothers Construction Co.,
711 North Grand, St. Louis
Home WY3-6717 Business OL2-1776

Wenzel, Herman (Helen) 1926 Tr 77
948 Gravois Road, Fenton, Mo.
Chairman of Board, H. Wenzel Tent
& Duck Co., 1280 Research Blvd.
Home DI3-2073 Business WY3-4000

Wieser, Homer C. (Dorothy) 1928 Tr 236
10610 Bellefontaine Road, St. Louis 63137
Dentist, 6150 W. Florissant 63136
Home UN7-3339 Business EV1-7143

Willert, A.W. Jr. (Billie) 1925 Tr 86
1717 Warson Estates, St. Louis 63124
Manufacturer, Irwin-Willert Co.,
4044 Park Avenue
Home Y04-4696 Business PR2-2822

Willerton, James E. Jr. (Betsy) 1940 Tr 35
12225 Space Drive, Florissant 63033
Ford Motor Co., 111 S. Bemiston, 63105
Home TU6-4454 Business PA1-6670

Wilson, Robert G. (Emmy) 1944 Kokomo,
Indiana
1102 Cameo Ct., Des Peres, Missouri
Sales Engineer, Union Carbide Corp.,
1020 W. Park, Kokomo, Indiana
Home Y06-8881 Business Y06-8881

Wiltse, James L. (Dorothy) 1945
Kansas City, Mo.
3355 Hambletonian Dr., Florissant
Claim Superintendent, Allstate Ins.
Company, 9817 W. Florissant
Home WA1-0514 Business JA1-9700

Wischmeyer, Kenneth E. (Janice Laura)
1924 Tr 23
11345 Mosley Lane, St. Louis 63141
Architect, Kenneth E. Wischmeyer &
Partners, 317 N. 11th Street
Home HE2-6861 Business CE1-4704

