



"Every Scout an Eagle" Scouting's Highest Rank

OFFICIAL HANDBOOK and ROSTER

THE EAGLE SCOUT ASSOCIATION

THE EAGLE SCOUT ASSOCIATION IS
A GROUP OF EAGLE SCOUT ALUMNI
ORGANIZED TO "GIVE BACK TO
SCOUTING SOMETHING THAT WE GOT
OUT OF IT." IT'S GOAL IS TO
HELP EVERY SCOUT BECOME AN
EAGLE -- SCOUTING'S HIGHEST AWARD.

THE EAGLE SCOUT ASSOCIATION EXTENDS
ITS APPRECIATION TO LAVERNE ROTH AND
ROBERT SIEGEL OF THE ST. LOUIS AREA COUNCIL,
BOY SCOUTS OF AMERICA,
WHO GAVE GENEROUSLY OF THEIR TIME IN
PUBLISHING THIS BOOK.

Edited by
Ron Smillie
Membership Secretary

PURPOSE OF THIS BOOK

The official handbook and roster's prime purpose is a reference for membership personal data and procedural instructions for ESA officers and committees. But its broader purpose is to inform those interested in Scouting of the operations of this unique organization -- the first such association in Scouting.

May this book also serve as an invitation to all Eagle Scouts in the greater St. Louis area who are over 21 to join the ESA. Those who received their Eagle in the local area as well as those from other cities are both welcome.

TABLE OF CONTENTS

	<u>Page</u>
The Eagle Award	1
In All Walks of Life	2
The Eagle Scout Association	3
The Scope of St. Louis Scouting	4
ESA helps Scouts Advance	5
ESA Special Projects	8
ESA Fellowship	10 & 11
Articles of Agreement	13 & 14
By-Laws of the Eagle Scout Association of St. Louis	14 thru 17
Handbook for Directors, Officers and Committeemen	18 thru 25
Eagle Scout Association Board of Directors -- 1959	26
ESA Past Presidents	27
St. Louis Area Council Officers	27
Executive Board Members-at-Large	27
Advisory Board	27
District Chairmen and District Executives	27 & 28
ESA Roster	29 thru 42
Roster of new members added since list completed	42

1914

1. The first part of the report deals with the general situation of the country and the progress of the work during the year. It is divided into two main sections, the first of which deals with the general situation and the second with the progress of the work.

2. The second part of the report deals with the details of the work done during the year. It is divided into three main sections, the first of which deals with the work done in the field, the second with the work done in the laboratory, and the third with the work done in the office.

1915

1. The first part of the report deals with the general situation of the country and the progress of the work during the year. It is divided into two main sections, the first of which deals with the general situation and the second with the progress of the work.

2. The second part of the report deals with the details of the work done during the year. It is divided into three main sections, the first of which deals with the work done in the field, the second with the work done in the laboratory, and the third with the work done in the office.

3. The third part of the report deals with the results of the work done during the year. It is divided into three main sections, the first of which deals with the results of the work done in the field, the second with the results of the work done in the laboratory, and the third with the results of the work done in the office.

4. The fourth part of the report deals with the conclusions drawn from the work done during the year. It is divided into three main sections, the first of which deals with the conclusions drawn from the work done in the field, the second with the conclusions drawn from the work done in the laboratory, and the third with the conclusions drawn from the work done in the office.

5. The fifth part of the report deals with the recommendations made during the year. It is divided into three main sections, the first of which deals with the recommendations made in the field, the second with the recommendations made in the laboratory, and the third with the recommendations made in the office.

6. The sixth part of the report deals with the summary of the work done during the year. It is divided into three main sections, the first of which deals with the summary of the work done in the field, the second with the summary of the work done in the laboratory, and the third with the summary of the work done in the office.

7. The seventh part of the report deals with the closing remarks. It is divided into three main sections, the first of which deals with the closing remarks made in the field, the second with the closing remarks made in the laboratory, and the third with the closing remarks made in the office.

THE EAGLE AWARD

Scouting's Highest Honor

Although it is the goal of every Tenderfoot, fewer than two of each hundred boys who enter Scouting attain Eagle rank.

Winning the Eagle badge takes years of intensive effort - acquiring many new skills, broader knowledge, actually living the precepts for which Scouting stands.

The Eagle award is not had for the asking.

The requirements are high. As with all awards, the badge itself is just a symbol. Behind the badge are the priceless lessons learned on the way up. It's wearer, by his achievement, has uncovered the real meaning of Scouting. It follows him the rest of his life. HE IS A LEADER.

Each candidate for Eagle rank must successfully have advanced through the lower ranks of Scouting - first as a Tenderfoot, then Second Class, First Class, Star and Life Scout.

Each step up the ladder carries its own requirements which grow more difficult and advanced as the boy's knowledge of Scouting develops.

To attain Scouting's three top ranks, a Scout must qualify for certain Merit Badges, symbols of proficiency in specialized fields. Selected counselors, specialists in each subject, examine each candidate for Merit Badges. These examinations aim beyond mere technical compliance with the requirements, to test the Scout's knowledge of each subject, gained from his own application and study. Practical knowledge, not just book learning, is stressed. Special care is exercised to guard against too rapid advancement by the Scout, insuring thoroughness in his work.

An applicant for the rank of Eagle Scout must appear in person before a Board of Review and satisfy this Board that he has successfully met these requirements:

1. He has put into practice in his daily life the spirit of the Scout Oath and Law, the Motto "Be Prepared", and the Daily Good Turn.
2. He has demonstrated leadership in Scouting as a Life Scout during a period of at least six months; served his home, school, church and community; taken care of things that belonged to him and respected the property of others.
3. He has qualified for a total of at least twenty-one Merit Badges to include six Badges selected from required groups plus Camping, Cooking, Swimming, Life Saving, Nature, Personal Fitness, Public Health, Safety, Firemanship, First Aid Merit Badges, and five other Badges of his own selection.

Difficult as the Eagle goal may seem to the beginner, it is a challenge well worth a boy's best efforts.

Receiving the Eagle Award is one of boyhood's greatest thrills.

IN ALL WALKS OF LIFE ...

men who once wore the Scout uniform are today giving proof of their leadership -- in the professions, in industry, and in public service.

The consistent way in which these men have risen to positions of responsibility in many different fields is a tribute to their Scouting training.

Among the Scouts of the United States are famous Americans listed below. There are many, many more, though lack of space foregoes our listing them here.

Major General John H. Collier, U.S.A.	Ozzie Nelson, actor
Lt. General Curtis Le May, U.S.A.F.	Jimmy Stewart, actor
Marquis A. Childs, author	Hon. Ezra Taft Benson, Sec. Agriculture
Alvin Dark, baseball	Dr. Ralph J. Bunche, U.N. official
Ralph Kiner, baseball	Hon. Tom Clark, Associate Justice
Allie Reynolds, baseball	Hon. William O. Douglas, Asso. Justice
Phil Rizzuto, baseball	Hon. James C. Hagerty, Press Secretary
Harold L. Curtis, Vice-Pres., Shell Oil	Hon. Richard McArdle, Chief, Forest Serv.
Robert C. Donlop, President, Sun Oil Co.	Former Gov. Thomas E. Dewey of New York
Arthur B. Homer, Pres., Bethlehem Steel	Former Gov. Alfred E. Driscoll, N. J.
Fred Maytag II, Maytag Corporation	Gov. Walter J. Kohler, Jr., Wisconsin
Juan T. Trippe, President, Pan Am Airways	Gov. J. Bracken Lee of Utah
Thomas J. Watson, Jr., President, IBM	Former Gov. Sid McMath of Arkansas
Andre' Baruch, announcer	Gov. Allan Shivers of Texas
Hal Boyle, Associated Press Correspondent	Brooks Hays, representative of Arkansas
Milton Caniff, cartoonist	Tom Curtis, representative of Missouri
Walter Cronkite, news analyst	James W. Fulbright, Senator of Arkansas
Bob Trout, news analyst	Hubert H. Humphrey, Senator of Minnesota
Dr. Horace L. Hildreth, Pres., Bucknell University	John J. Sparkman, Senator of Alabama
Dr. Barnaby C. Keeney, Pres., Brown University	Rabbi Bernard Bamberger, Pres., S.C. of A.
Dr. Nathan M. Pusey, Pres., Harvard University	Dr. Gilbert Close, Jr., Pres. Director
Henry Fonda, actor	Rev. Carl Reinhert, Pres., Creighton Univ.
Bob Hope, actor	Dr. Mont. A. Cazier, Am. Museum of Nat. History
Arthur Godfrey, announcer	Earl Cocke, Jr., past Ntl. Cmdr. American Legion

THE EAGLE SCOUT ASSOCIATION

ESA is an alumni group, but not in the usual sense of college, fraternity or veteran types. It is also a community activity, but not the usual kind devoted to raising funds for a cause. ESAers are "grown up Eagles" that still maintain a lively interest in Scouting and who have pleasantly discovered each other to be usually interesting and worthwhile social friends -- a unique cross section.

Perhaps because ESAers shared a common moving boyhood experience they have a feeling of duty which they demonstrate in their voluntary participation in Council activities. Each of the top six Council committees are chaired by or contain an ESA member. And the inspection of the ESA roster indicates the impressive amount of leadership and participation ESAers provide local Scouting at all levels.

But direct activity in Scouting is not a purpose of the ESA. New members are not "called upon" to serve. ESA adult Scouting activity is on a voluntary individual basis just as the achievement of the Eagle rank was a voluntary and individual thing. To the ESAer adult Scouting is an "affair of the heart" and not a professionally organized and planned group activity. Possibly because of this individual appeal the ESAer finds it a pleasure to work toward the ESA purpose.

ESAers are predominantly middle aged (hence the title "Bald Eagles") who are active and busy men. Mostly family men, their vocations run the gamut from advertising men, architects, artists, and attorneys, through carpenters, electricians, policemen, professors, professional Scouters and professional men, to researchers and writers...including almost every type of gainful activity in the area.

PURPOSE

The common purpose that welds these diverse men together is two fold: (1) social and (2) Scouting advancement (both individual advancement and advancement of the movement). The serious purpose is to strive toward achievement of ESA's goal, "Every Scout an Eagle", through advancement and Eagle recognition programs as well as assistance to the Council on special projects. The social activity of various types (stag, with wives, with families, and even programs for teen age sons and daughters of "Bald Eagles") brings the group together, rekindles enthusiasm and acts as the "synergist" that keeps the members united and active.

HISTORY

ESA was founded in 1947, largely through the efforts of Col. Joseph E. Vollmar, then president of the St. Louis Area Council. After a working list of names was uncovered from the Council's files, some seventy St. Louisians, all former Eagle Scouts, were invited to a dinner meeting at which the preliminary plans for the ESA were laid.

Since that day--subsequent meetings, election of officers, adoption of a Constitution and By-Laws, projects and programs to be undertaken--the entire ESA program has been the spontaneous product of the members of the members of the association with Carl H. Laemmler, Assistant Scout Executive of the St. Louis Area Council, serving as liaison.

During the initial organization drive the records revealed that since 1920 approximately 2,300 young men had received the Eagle award in St. Louis. As a result of time and war's dislocation only about 750 of these men were located residing in the Council area. From the initial 70, the association has grown to about 250 active members. But its membership has not been exclusively St. Louis Scouters. Many of the present members received their Eagles in other councils, but now reside in the St. Louis area. And interestingly not all the members got their Eagles when they were young men. Several members have re-entered Scouting as adults to work for their Eagle with the prime purpose of being eligible to join the ESA.

THE SCOPE OF ST. LOUIS SCOUTING

Scouting in St. Louis is big, but few, even those in Scouting, truly realize its scope. The St. Louis Area Council now serves over 43,000 Scouts--38% of the entire eligible boy population! No major metropolitan Council can match this.

A staff of about 30 professional Scout Leaders supervise this tremendous Scouting operation. They manage over \$1,000,000 worth of camping properties in addition to helping raise and administer an annual Council operating budget of over \$600,000.

Over 14,000 busy adults unselfishly devote their personal time and energy to serve St. Louis Area Scouting as volunteer leaders. Included are over 1,000 unit leaders...Cubmasters, Scoutmasters, and Explorer Advisors. There are over 3,500 Den Mothers alone, plus thousands of Unit Committeemen, Commissioners, Merit Badge Counselors, Members-at-Large and others. Among the Members-at-Large are the former Eagle Scouts joined together into the Eagle Scout Association of St. Louis.

By Jubilee year, 1960, the Council expects an increase to 50,000 Scouts. A rapid growth condition brought about by the attractiveness of St. Louis Area Scouting to the boys coupled with the fact that 16,000 St. Louis area boys come of Cub age each year. The ESA, therefore, has a rapidly expanding opportunity for service to Scouting and to the St. Louis Committee.

ESA HELPS SCOUTS ADVANCE

In the first decade of ESA, activities have evolved suited to the members' experience, but not beyond their capacity of time or training. Working through established Scouting channels ESA has served both as a unit and as individuals on special ESA projects or regular adult Scout activity. The major ESA efforts are made toward encouraging boys to become Scouts and then to attain its highest rank. This work includes such things as a unique Eagle Recognition program, a continuous swimming advancement program, and merit badge and Eagle examinations. In addition, ESA, as a unit, takes special participation in Council functions such as the Scout Circus and Scout Exposition.

EAGLE RECOGNITION



Invocation being given by new Eagle Scout at 1959 Eagles' Recognition Day. (l. to r.) E. M. Clark, President of the St. Louis Area Council; James Blair, Governor of Missouri; Tom Spurr, son of ESA member Ray Spurr; and Gene A. Cole, President of Eagle Scout Association.



Eagles standing to be presented ESA Recognition Plaques at 1959 Eagles' Recognition Day. Attendance: 585 new Eagles, parents, Council officers, ESA members and guests.

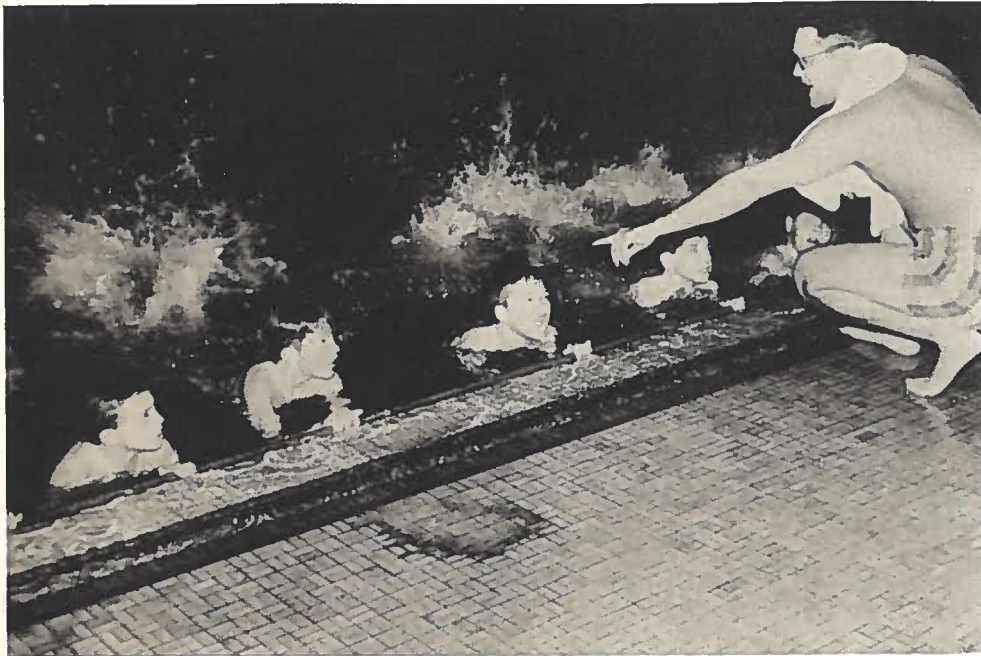
Eagles' Recognition Day was originated by ESA and is sponsored annually to honor the Eagle Scouts of the St. Louis Area Council who have received Scouting's highest award during the previous twelve months. Usually the meeting takes place in June at the Beaumont Reservation. Parents and friends of the new Eagles are invited to attend along with the ESAers and Council officials.



MERIT BADGE AND EAGLE EXAMINERS

Each Scout in order to earn merit badges and his Eagle rank must pass required tests to the satisfaction of a competent examiner. ESAers are especially suited for examiners due to their great variety of Scouting and vocational experience. Over 40 ESA members are active in this work.

SWIMMING ADVANCEMENT

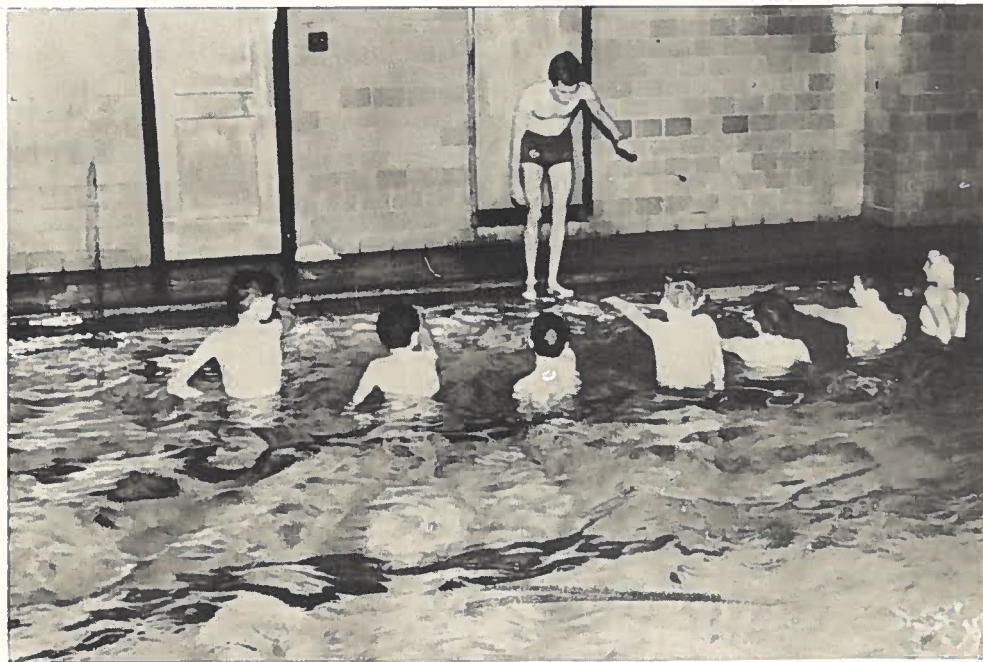


A First Class Scout must know swimming safety requirements and must (1) have jumped into water over his head, (2) swam fifty yards during which he must (3) stop, (4) make a sharp turn, (5) level off, and (6) resume swimming.

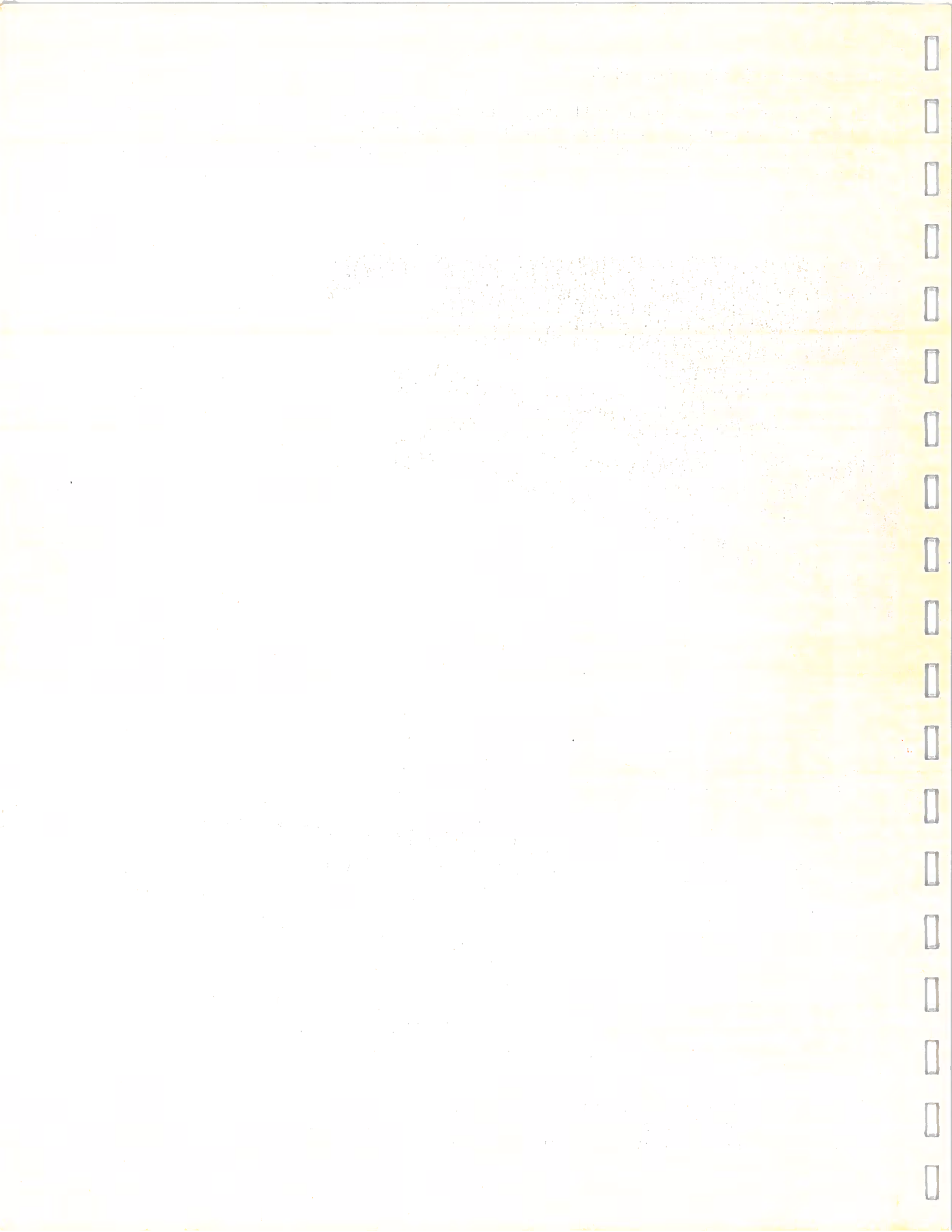
Since the start of this program over 1200 have been helped to pass their First Class requirements.

The Swimming and Life Saving Merit Badges require advanced proficiency in these valuable skills.

The ESA Swimming Advancement program began shortly after the association was formed.



ESA, in conjunction with the Meramec River Patrol, helps young Scouts meet their swimming requirements for First Class, Swimming and Life Saving Merit Badges. The program is a weekly affair in the Armory Building during the winter months.

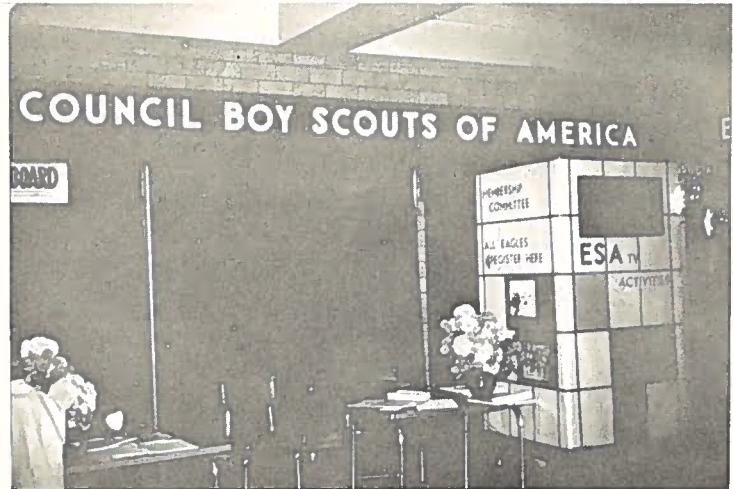


BOY SCOUT CIRCUS VARIETY SHOW

ESA produces for each Scout Circus a behind-the-scenes variety show for the participants waiting to appear on the Circus program. Professional acts such as magicians, wrestlers, dancers, hill-billy bands and singers are hired for this backstage entertainment never seen by the public.

BOY SCOUT EXPOSITION

ESA sponsors a booth at the biennial Boy Scout Exposition.



The booth presents ESA activities and also acts as a public information booth.

Many new ESA members have been attracted through the booth display at the Exposition.



... ..
... ..
... ..

... ..
... ..

... ..
... ..

... ..
... ..

... ..
... ..

ESA SPECIAL PROJECTS

There are annual and occasional special projects that the entire ESA unites in supporting with both time and contributions. These include the "Friends of Scouting" Drive as well as exclusively ESA projects such as the building of the Beaumont Tower and equipping a Ranger Chuck Wagon for the Council. The 1959 project is the rebuilding of the tower at Camp Irondale.



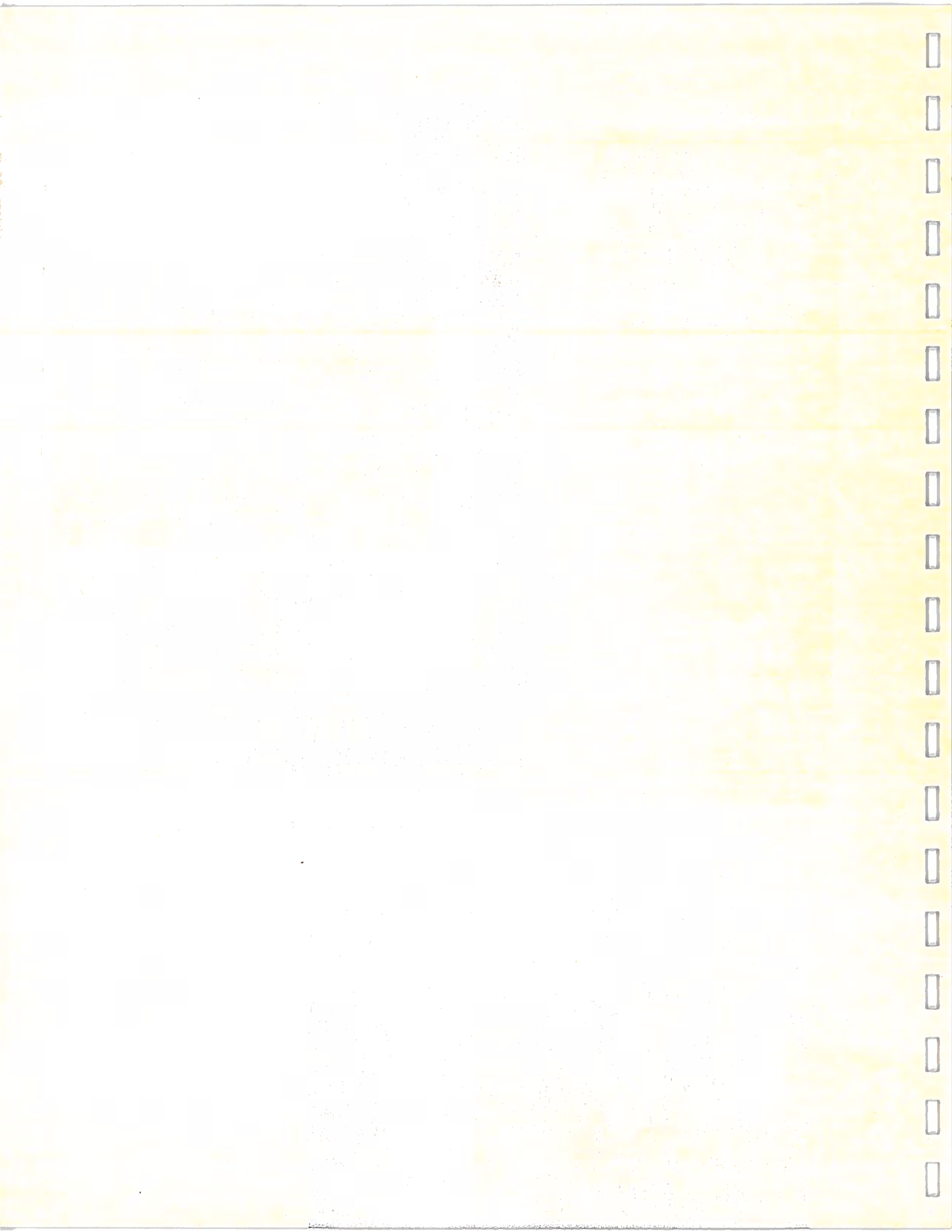
BEAUMONT "EAGLE'S NEST"

In 1953 the ESA conceived of, raised funds for and built a 60-foot fire tower on the Beaumont Reservation as a protection for its 2,400 wooded acres.

Iron construction workers erect tower in 1953.

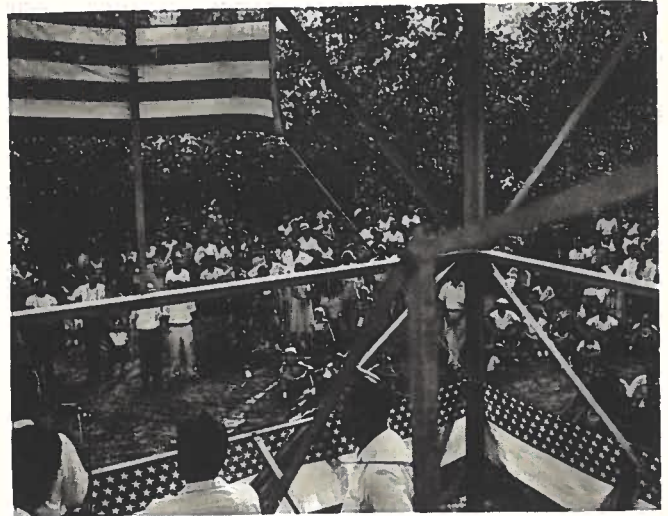


ESA "straw bosses" on hand to guard the chow.





Tower completed in 1953.

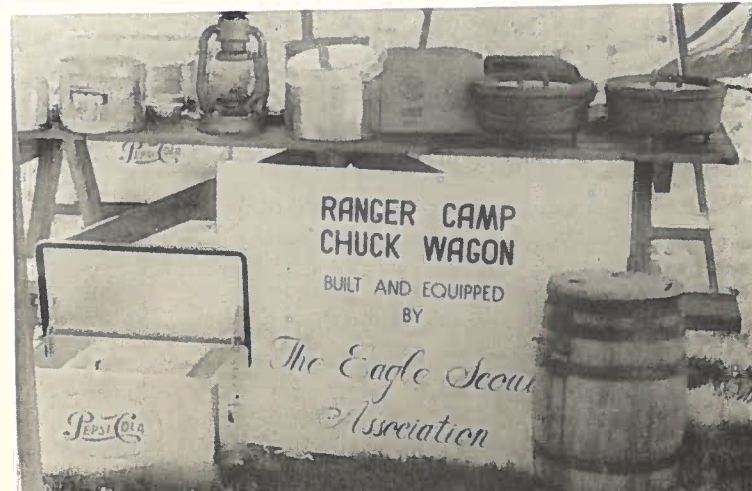


Dedication ceremony on August 14, 1954.

Originally used by the Conservation Commission as a fire tower, it has in recent years been enjoyed by Scouts as an observation and signal tower.

RANGER CAMP CHUCK WAGON

In 1957 it became apparent that the Ranger Scouts needed a chuck wagon to carry rations and excess baggage during trail rides. The ESA took over the supplying of this need as a project, designing, building and equipping a horse-drawn Ranger Camp Chuck Wagon.







ESA FELLOWSHIP

In addition to the serious ESA activities there is an abundance of Eagle fellowship provided through many social gatherings during the year. The major ESA function involves the ESAer's entire family with special programs for the teen-ager and younger set. There's also grown folks affairs, too, such as dinner and square dances as well as bowling and roller skating parties. And for the unreconstructed stags looking for male fellowship, there are two stag affairs...the Ranger ride steak fry and the Sea Scout sail.







IRONDALE WEEKEND

Highlight of the ESA year takes place at Camp Irondale during the three-day Labor Day weekend when the entire camp facilities are turned over to the ESAers and their families to enjoy. "No work" is the rule for the wives at Irondale where the "Bald Eagles" take over the job of table waiting to serve the summer camp cook staff prepared meals. Except for the annual ESA business meeting the weekend is devoted to organized and casual fun activities including swimming, baseball, campfire programs, square dancing, hiking, midnight swims and snacks, just plain resting and sleeping in the sun. Special additional programs are provided for both the ESA teen-age group and the younger pre-teen juvenile set. The bounty of good time at a reasonable cost (just sufficient to cover expenses) has attracted capacity crowds of 250 weekenders.





ESA FELLOWSHIP

The ESAer and his wife (or girl friend) are sociable. The winter season is highlighted by many social functions such as dinner dances, bowling parties, square dances, roller skating and such. Many of the dinner dances have been held at the Naval Air Base Officers Club such as the event pictured below. The finances for the social affairs are on a separate and optional basis from the regular ESA dues and solicitations for special events or projects.





ARTICLES OF AGREEMENT
OF
EAGLE SCOUT ASSOCIATION
OF ST. LOUIS AREA COUNCIL,
BOY SCOUTS OF AMERICA

KNOW ALL MEN BY THESE PRESENTS: That we, the undersigned, desirous of forming a corporation under the Laws of Missouri, and more particularly, under the provisions of Chapter 352 of the Revised Statutes of Missouri, 1949, and the amendments thereto, relating to an governing benevolent, religious, scientific, fraternal, fraternal-beneficial, educational and miscellaneous associations, have entered into the following agreement:

FIRST: The name of this organization shall be

EAGLE SCOUT ASSOCIATION OF ST. LOUIS AREA COUNCIL,
BOY SCOUTS OF AMERICA

SECOND: This organization shall be located in the County and City of St. Louis and shall be active within the geographical limits of the St. Louis Area Council of the Boy Scouts of America.

THIRD: This organization shall continue and exist for a perpetual term.

FOURTH: This association is formed and organized for the following purposes, to-wit:

(a) To operate as a non-profit association, civic in its nature and interest; to assist the Boy Scouts of America in the promotion of better and more widespread Scouting in this area subject to the rules of the St. Louis Area Council and to promote the welfare of the community.

(b) To buy, purchase, or otherwise acquire, hold, own, possess, sell, lease, rent, exchange, assign, convey and/or transfer real or personal property of every kind and character, incidental, essential or necessary to or for the purposes herein set forth without profit or gain to the members of the association, and as may be sanctioned by law.

(c) To invest and/or loan money, execute, make, endorse, accept, assign, transfer, sign and deliver notes, drafts, bills of exchange, securities, obligations and evidence of indebtedness of every kind and character incidental or necessary to or for the purposes herein set forth, without gain or profit to the members of the association, and as may be sanctioned by law.

FIFTH: This organization shall have the power to raise money by dues from its members in the manner to be fixed and determined by its By-Laws and the property and funds of this corporation shall be used only for the purpose of the corporation as herein expressed and not for the benefit of its members, nor shall any fund or money of the corporation be paid to any member or members thereof, except in payment for property received and services rendered; and if at any time this corporation should dissolve for any reason, all funds and property then belonging to this corporation shall be distributed to the St. Louis Area Council of the Boy Scouts of America for the betterment of Scouting.

SIXTH: The officers of this corporation shall be in accordance with the By-Laws of the Eagle Scout Association of the St. Louis Area Council, Boy Scouts of America and they shall hold office during their term as set forth in the By-Laws. The members may adopt and amend its By-Laws for the regulation of its own affairs and not inconsistent with the Constitution of the United States and the State of Missouri.

SEVENTH: Your petitioners expressly declare that this corporation is not organized for manufacturing, agricultural or business purposes of any kind, and for the pecuniary gain or profit of its members and that the corporation has no capital stock or shares thereof.

IN TESTIMONY WHEREOF, we have hereunto set our hands this 10th day of October, 1953.

Albert W. Gruer, Jr.
President

Wm. M. Livingston
Vice-President

Ray Brigham
Vice-President

Charles Bland
Treasurer

Jack Grossman
Vice-President

Jerome W. Steiner
Secretary

BY-LAWS OF THE EAGLE SCOUT ASSOCIATION OF ST. LOUIS

I. MEMBERSHIP

The membership shall be open to all Eagle Scouts who are at least 21 years of age. The Association will register all members as Scouters in the Boy Scouts of America. Maintenance of the membership shall be dependent upon payment of the annual dues.

II. MEETINGS

The Association shall hold a meeting annually for the consideration of reports, for the installation of new officers, and the transaction of such other business as may come before the meeting. Two additional general membership meetings shall be held during the year. Special meetings may be held at such times as the Board of Directors of the Association may prescribe. Upon petitions signed by 10% of the members of the Association or by 50 members or more thereof, the President or the Recording Secretary shall call a special meeting of the Association to act upon subject matter specified in such petition. Fifteen members shall constitute a forum at the annual or at any special meeting of the Association. Notice of any meeting of the Association shall be by mail at least 10 days prior to the date of the meeting.

III. BOARD OF DIRECTORS

Section 1. The government of the Association as vested in the Board of Directors who shall have full and complete control and direction of the affairs of the Association subject to these By-Laws and the action of the Association in annual, regular or special meetings.

Section 2. The Board of Directors shall consist of 24 members of the Association. Six of these members are the previous six presidents. Of the remaining 18 members, six are elected each year and serve for a three year term. A Board member can only serve two consecutive terms. After an interval of at least one year a member is eligible for re-election. When a vacancy occurs in the Board, such vacancy shall be filled by appointment of the President until the next annual election at which time the unexpired term shall be filled by election.

Section 3. A Nominating Committee for new Board members, consisting of no less than three or more than five members, shall be appointed by the President to prepare a list of nominees for the election to the Board. The President and the Recording Secretary shall serve as ex-officio members of this committee. The Committee shall submit the names of its nominees to the Recording Secretary of the ESA at least thirty days prior to the date of the annual election. Should it be necessary to select a nominee to fulfill an unexpired term, the Nominating Committee will designate which nominee is to fill the vacancy. The Recording Secretary, at least thirty days prior to the annual election, shall solicit direct nominations for new members of the Board from the membership. Prior to closing the nominations, the Committee shall consult each nominee personally and obtain his agreement to serve as either, or both, an officer of the Association at any time during his term as a Board member, if so elected; or as chairman, or co-chairman of any standing committee or special committee, is so appointed by the President. Ballots listing all qualified nominees shall be mailed to the members of the Association at least fourteen days prior to the date of the annual election.

Section 4. The closing date for nominations and the date of the annual election shall be announced by the Recording Secretary thirty days in advance of the annual election which shall occur within ten days prior to the annual meeting.

Section 5. Members may vote for as many new candidates for the Board as there are vacancies to be filled by election. Ballots shall be received by the Recording Secretary on or before the date of the election.

Section 6. The Board shall meet within ten days after the annual election for the purpose of organization. At this meeting the Board shall elect from its members the President, three Vice-Presidents, Recording Secretary, Membership Secretary, and Treasurer of the Association.

Section 7. The Board shall organize itself, adopt rules, appoint committees, schedule meetings, etc., in whatsoever manner it chooses in order to carry out its responsibilities under these By-Laws.

Section 8. The President, or in the case of his resignation, death, or inability or disability, a Vice-President, may call meetings of the Board of Directors at any time. The Board of Directors will meet at least once every two months for the purpose of hearing committee reports and conducting business.

Section 9. A quorum of the Board of Directors shall be nine members.

IV. DUTIES OF OFFICERS

Section 1. The President shall be the executive head of the Association, presiding at meetings of the Board and of the Association and performing such other duties as may be assigned by the Board.

Section 2. The Vice-President shall direct and coordinate the activities of the standing and special committees as assigned by the President and shall perform such other duties as may be assigned by the President or by the Board of Directors. In the absence or disability of the President, the Vice-President shall have all the powers and duties of the President.

Section 3. The Recording Secretary shall record and preserve the minutes of all meetings of the Association and of the Board of Directors, and shall do and perform such other duties as may be required of him by the Board of Directors or as may ordinarily and usually pertain to his office.

Section 4. The Membership Secretary shall issue annual membership cards to each member in good standing, maintain the membership list, publish the annual roster, assemble and mail all general membership mailings, and shall perform such other duties as may be required of him by the Board of Directors or may ordinarily and usually pertain to his office.

Section 5. The Treasurer shall receive and disburse the funds of the Association, shall keep proper books of account, shall make an annual report to the Association, and shall register every ESA member with the St. Louis Area Council.

Section 6. A Nominating Committee for officers shall be appointed by the President from past presidents of the Association. The committee shall consist of no less than three nor more than five members. The President shall serve as an ex-officio member of this committee without vote. The Committee shall submit its nominations to the first meeting of the Board following the annual election of Board members. Before closing its nominations, the Committee shall consult each nominee personally and obtain his agreement to serve in the particular office for which he is being nominated.

Section 7. Election of the officers by the Board of Directors shall take place at the first meeting of the Board following the annual election of Board members. Nominations, in addition to those made by the Committee, may be made from the floor during the election meeting, and it shall be the duty of the presiding officer to call for such nominations.

V. COMMITTEES

Standing and special committees shall be appointed by the President from among the Association membership and shall be responsible to him in his capacity as executive.

VI. DUES

Per capita dues of the Association shall be \$3.00 per year. The approval of two-thirds of the total membership shall be required in order to change the dues or to establish an assessment. This provision shall not apply to the establishment of prices for social events.

VII. PARLIMENTARY AUTHORITY

The rules contained in Roberts Rules of Order, revised, shall govern the Association in all cases where they are applicable and in which they are not inconsistent with these By-Laws or with any rules which the Association may adopt.

VIII. AMENDMENTS

Section 1. The members, by affirmative vote of two-thirds of the members attending, may, at any regular or at any special meeting called upon ten days prior notice for that purpose, alter or amend these By-Laws.

Section 2. The By-Laws may also be amended by a two-thirds majority vote of the Board of Directors.

Section 3. If any member desires to offer an amendment to the By-Laws, he shall file such an amendment with the President, and such an amendment shall not be voted on unless written notice be sent to all members of the Board of Directors giving notice of the proposed amendment at least 10 days before the meeting of the Board of Directors, provided, however, that the By-Laws may be amended at any meeting of the Board of Directors by unanimous consent of those present, but where at least a quorum must be in attendance.

HANDBOOK FOR DIRECTORS, OFFICERS, AND COMMITTEEMEN

INTRODUCTION

This handbook is intended to be of use in the direction and administration of ESA activities.

The information contained herein is not intended to change or supersede the By-Laws. In case of conflict, the By-Laws take precedence. Amendments to the information contained herein shall be made by the policy committee and submitted to the Board of Directors for approval. The Policy Committee may originate changes or act on changes requested by the Board of Directors.

BOARD OF DIRECTORS:

The Board of Directors meet regularly (every two months) for the purpose of hearing committee reports and to conduct business.

The first meeting of the Board is for the purpose of organization and takes place during the Irondale weekend. Election of officers for the coming year takes place at this meeting.

PRESIDENT:

The President is the executive head of the ESA. By virtue of his office, he is a member of the Executive Board of the St. Louis Area Council and represents the ESA in Council activities.

The President calls the Board of Directors and general membership meetings.

The President extends personal invitations to the Council executives for ESA social and Scouting activities.

The President, upon receipt of notice from the Membership Committee, shall write a letter of welcome to each new member.

The President, with the advice and counsel of the Vice-Presidents, selects and appoints all committee chairmen.

The President assigns to each Vice-President the responsibility of certain committees. A typical division of the various committees among the three Vice-Presidents is as follows:

Irondale Weekend	Social	Membership
Irondale Reservations	Publicity	Eagle's Day
Irondale Teen Age	Swimming	Towers
Exposition	Historian	Policy
Projects		

VICE-PRESIDENTS:

The Vice-Presidents shall direct and coordinate the activities of these committees assigned by the President.

This work shall include the following:

- a. Assist the President in selection of committee chairmen and co-chairmen.

- b. Plan, with each committee, the coming year's program and report on this program to the Board of Directors.
- c. Coordinate the efforts of each of the committees assigned to him and through the appropriate Vice-President the work of these committees with other committees.
- d. Obtain from each committee chairmen at the end of the year a detailed review of the committee's activity. This will be filed with the Recording Secretary and will serve as an aid to the succeeding chairman.

TREASURER:

The President shall appoint an Auditing Committee to examine the books before they are transferred from the old Treasurer to the new Treasurer.

The Treasurer shall present to the Board of Directors a budget for the fiscal year at the second Board meeting. The budget shall contain a breakdown for each committee. He shall report on the financial status at each Board of Directors meeting and general membership meeting. This report shall include a comparison of actual expenditures and income and budgetary expenditures and income.

The Treasurer shall prepare a statement of dues to be sent to all members in September. Along with the statement of dues, the Treasurer shall send a roster questionnaire soliciting all the necessary information for the annual ESA roster. This questionnaire is compiled jointly with the Membership Secretary.

The Treasurer shall follow up monthly on delinquent members until June at which time a final notice stating the members name will be dropped from the next year's roster unless dues are paid.

In January, the Treasurer shall register every ESA member in a "Scouting at Large" capacity with the St. Louis Area Council, unless the member on his annual registration form shall request registration with some other Scouting unit.

RECORDING SECRETARY:

The Recording Secretary when notified by the President shall issue notices for Board and general membership meetings. An agenda shall be included in the notice of the meetings. Notices shall be followed by a telephone call to achieve good attendance.

The Recording Secretary shall record minutes of all Board and general membership meetings. Minutes of Board meeting shall be distributed to all Board members. Minutes of general membership meeting shall be read at the following meeting.

The Recording Secretary, in cooperation with the Nominating Committee for new Board members, shall conduct the annual election procedure for Board members as outlined in the By-Laws under III, Board of Directors, Section 3. The Secretary shall receive and tabulate the ballots. He shall also announce results of the election and annual general membership meeting.

The Recording Secretary shall maintain the correct signature card at the bank.

The Recording Secretary shall keep on hand the final detailed reports of each committee. These reports will be made available to correct committee chairman.

MEMBERSHIP SECRETARY:

The Membership Secretary shall maintain an accurate, up-to-date list of all members, including telephone, address, wife's name and other pertinent data.

He shall notify the Council office of changes in roster so that the addressograph plates will reflect the latest roster. A secondary listing of all former members shall also be kept. A third listing of prospective or eligible members shall be maintained.

The Membership Secretary shall work with the Scout headquarters in maintaining an accurate set of addressograph plates of the mail addresses of the members of the ESA.

The Membership Secretary shall be an ex-officio member of the Membership Committee and shall issue a membership card to each member who has paid his dues.

The Membership Secretary shall issue annually a new roster and handbook to the general membership. The roster section shall list the member's name, home telephone, address, wife's name, business position, business telephone, the Troop and year the Eagle badge was awarded, and any current Scouting affiliation. The roster and handbook shall also contain general information about ESA such as officers, Board members, committee chairmen, By-Laws and handbook for Directors, Officers, and committeemen. The roster handbook form shall be maintained at the Scout headquarters by the Membership Secretary and he shall assemble, print and distribute the roster handbook prior to January 1st each year.

The Membership Secretary will receive up-dated information for the roster from the Treasurer's statement of dues which is sent out after every annual meeting. The roster shall contain, and be distributed to, only those members who have paid their dues for the previous year.

COMMITTEES-GENERAL INFORMATION:

All committees shall endeavor to enlist the services of as many ESA members as possible. Particularly emphasis shall be made to make new members active.

Committees shall meet as often as necessary to carry out their specific duties. The appropriate Vice-President shall be considered an ex-officio member of the committee. Where it is desirable to insure continuity of program from year to year, and to provide experience leadership, committee may be headed by a chairman and a co-chairman, with the co-chairman succeeding to the chairmanship the following year upon appointment by the President.

Each committee or co-chairman shall be prepared to report on their programs at each Board and general membership meeting. Whenever possible each committee shall make its plans early in the year and report on their plans at the first opportunity.

Where committee plans activities to which outsiders may be invited as guests or participants, the committee shall establish its own rules on such participation.

Each committee chairman shall appoint a member of his committee to act in liaison with the Publicity Committee, keeping the latter constantly informed.

Any officer or committee chairman may forward material for mailing to the Scout Headquarters to be included in the next general or special membership mailing. Such material shall be marked to the attention of Carl Laemmler as well as being plainly marked for ESA mailing.

MEMBERSHIP COMMITTEE:

The Membership Committee shall contact all prospective members. The prospective members names can be obtained from present members, Membership Secretary's files, and Scout events such as the Exposition.

The Membership Secretary is an ex-officio member of the Committee and should be called to all committee meetings by the chairman.

On receipt of a name of a prospective member, the Committee shall send a letter requesting him to fill out an application blank and enclosing the following:

- a. Official Handbook and Roster
- b. Application for ESA membership
- c. Application for National Council Registration
- d. Return envelope addressed to Membership Chairman

A copy of this letter can be sent to the person who recommended the prospect.

Upon receipt of membership application, check, etc., the Committee shall write a letter to the President of the ESA with copies to:

- a. Treasurer, enclosing check and National Council Registration.
- b. Membership Secretary, enclosing ESA application so that Secretary can add names to the roster and mailing list and send the membership card to member.
- c. Publicity Chairman who will include name in news bulletin.

SOCIAL COMMITTEE:

The Social Committee plans and carries out the social program for the ESA. This program, in addition to Irondale Weekend, shall include at least two social events. The number and type of social events shall be limited to the number and kind of activities that a reasonable group of the membership would attend. Two stag affairs are recommended as regular events. One at the Ranger Camp in the fall, and the other at the Sea Scout Base in the spring.

The Social Committee is responsible for refreshments at all general membership meetings.

Name tags shall be used at all social events. Every possible effort shall be made to greet and welcome new members and introduce them to others.

The Social Committee shall give detailed information to the Publicity Committee in sufficient time to allow printing and distribution of notices.

The Social Committee shall organize a woman's telephone committee to call members' wife prior to each mixed social affair.

Fees charged for social events shall be sufficient to make the event self-supporting.

The presence and use of alcoholic beverages are strictly forbidden in Scouting Reservations. Therefore, any social event held on Scout Reservations must comply with this regulation.

PUBLICITY COMMITTEE:

The Publicity Committee periodically issues the news bulletin and such additional notices and publications as may be required to announce social and other activities.

The news bulletin should contain as much news as possible about ESA members and activities. The names of new members shall be given as they join. The Committee compiles the news bulletin in typewritten form and forwards it to the Scout headquarters for printing and distribution.

This Committee arranges for press coverage of ESA activities whenever possible.

All announcements of events being held at the Scout Reservations shall clearly state that alcoholic beverages are not permitted.

HISTORIAN COMMITTEE:

The Historian Committee serves as custodian of all historical material pertaining to ESA such as photographs, news articles, letters, and other pertinent documents that have a historical value. A scrap book containing such materials shall be maintained by the Committee and be put on display at all social events as well as at the Scout Exposition.

IRONDALE WEEKEND COMMITTEE:

The Irondale Committee and its two sub-committees (Irondale Reservation and Irondale Teen-Age) plans and supervises the two (or three) day outing for ESA members and their families at Camp Irondale. The program must take into account the needs of all members and their families with special consideration being given to both children and teen-agers. Plans must include such matters as advance publicity, financing, menu planning, meal preparation, cabin and tent assignments, entertainment, swimming and athletic programs, and church services.

Budgeting and financing must take into account all anticipated costs, including meals, square dance caller, gift to the Council, etc.

Assistance in planning and/or administrating the program can be obtained by calling on other committees, such as publicity, swimming, and social.

A schedule of events and meal time shall be given to each person in attendance.

Members should be cautioned, in advance publicity, to leave dogs and alcoholic beverages at home.

EAGLES RECOGNITION DAY COMMITTEE:

Each year the Eagle Scout Association sponsors a convocation of ESA members and new Eagle Scouts in the St. Louis Area Council, together with their families, for the purpose of honoring the new arrivals to Scouting's highest award.

Personal invitations are sent to each Scout who received his Eagle award during the preceeding year, inviting him and his family or friends to attend. Invitations are also sent to the principal Scout Executives in the Council and such other outstanding figures in Scouting as the Committee may wish to invite. Automatically, invitations go to all ESA members.

There have been two types of programs used: (1) A Sunday evening supper and an award ceremony at Beaumont Reservation and (2) A luncheon gathering during the week at the Hotel Statler Ballroom. At the Beaumont gathering, each Scout paid for his own meal. Sponsors from the Eagle Scout Association, prominent business men, and members of the Executive Board underwrote the cost of the Hotel Statler Luncheon.

Special care should be taken in planning the meal so as to feed the group as efficiently as possible. Fees charged for the meal should cover expenses.

The ceremony should be inspirational and impressive. Talks are given by a principal speaker and the President of the ESA, culminating with the presentation of Honorary Certificates to the new Eagles.

SCOUT EXPOSITION COMMITTEE:

Every even-numbered year the St. Louis Area Council holds a Boy Scout Exposition. The Scout Exposition Committee arranges for, builds and mans the ESA sponsored booth at these Expositions.

The purpose of this booth is threefold:

1. To serve as a rallying point for ESA members and Scout Executives as a home base from which we conduct various VIP's about the Exposition.
2. To inform the public of the existence and activities of the ESA.
3. To attract new members to the ESA.

This Committee carries out the above functions by:

- A. Arranging with the Scout Council for the booth and letting them know we will be available for such services the Council may request.
- B. Designing and constructing a booth that will fulfill purposes 2 and 3 above. Volunteer labor and design talent are essential!
- C. Arranging with our Membership Committee to help man the booth and to have brochures, application blanks, etc. available.
- D. Removing exhibit and returning any borrowed equipment.

CIRCUS COMMITTEE:

The Circus Committee is established to assist the Council in putting on the Circus by producing a variety show for entertaining Circus participants. This show is staged in a large assembly area. Acts for the show may be selected from participating groups in the Circus such as the Scout Band and Indian Dances. Additional professional acts that have proven successful are: boxing, wrestling, magician, fencing, hill-billy band, etc.

The Committee should arrange in advance for a budget from the Scout Council for procuring these acts.

The Committee also provides a master of ceremonies for each night's variety show and provides sufficient ushers (four to eight) to maintain order around the stage.

TOWER ACTIVITIES COMMITTEE:

The Committee shall determine the maintenance and repair need for the ESA towers and surrounding grounds, reporting same to the ESA Board of Directors with recommendations for their care or use.

Committee shall determine need for liability insurance during tower work projects, submitting recommendations for same to ESA Board of Directors for approval.

THE POLICY COMMITTEE:

The Policy Committee shall act as an advisor to the President and Board of Directors in steering the ESA toward the accomplishment of its basic objectives.

It will maintain the Handbook for Directors, Officers and Committeemen containing up-to-date procedural and organizational information, including job descriptions, for the guidance of the organization.

Upon the request of the President or Board of Directors, the Policy Committee will undertake to study and offer solutions for problems occurring in the policy field.

It will also, on its own initiative, study any facet of the ESA's activities where it feels it may offer helpful guidance.

NOMINATING COMMITTEE--Board of Directors

A Nominating Committee for Board members consisting of no less than three (3) or more than five (5) members shall be appointed by the President. The President shall serve as an ex-officio member to counsel on the qualifications of individual nominees.

In arriving at its nominations, the Committee shall follow the procedure specified in the By-Laws of the Eagle Scout Association of St. Louis under Sections 2 and 3, Item III. BOARD OF DIRECTORS.

The Committee shall submit the names of its nominees to the Recording Secretary of the ESA at least thirty (30) days prior to the date of the annual election.

Before closing its nominations, the Committee shall consult each nominee personally and obtain his agreement to serve in either, or both, of the following capacities:

- a. as an officer of the Association at any time during his term as a Board member, if so elected:
- b. as chairman, or co-chairman, of any standing committee or special committee, if so appointed by the President.

In arriving at its nominations, the Committee shall give preference to members who, regardless of the time they have belonged to the ESA:

- a. Have been most active in ESA affairs in the immediate past:
- b. Have been most active in ESA affairs over the total number of years they have belonged to the Association:
- c. Have indicated a strong, sincere desire in becoming more active in the ESA in the immediate future.

The above are to be construed as being in order of importance.

NOMINATING COMMITTEE-Officers

A Nominating Committee for Association officers consisting of no less than three (3) or more than five (5) past presidents of the Association shall be appointed by the President. The President shall serve as an ex-officio member of this Committee, to counsel on the qualifications of the nominees, but without a vote.

The election of officers by the Board of Directors shall take place at the first meeting of the Board following the annual election of Board members. The Committee shall submit its nominations to the Board at this meeting.

Nominations, in addition to those made by the Committee, may be made from the floor during the election meeting, and it shall be the duty of the presiding officer to call for such nominations.

Before closing its nominations, the Committee shall consult each nominee personally and obtain his agreement to serve in the particular office for which he is being nominated.

In arriving at its nominations, the Committee shall give preference to members who have been:

- a. most active in ESA affairs in the immediate past, preferably as officers and/or committee chairmen;
- b. most active in ESA affairs over the total of years they have been members of the Association especially in Committee work.

PROJECTS COMMITTEE:

The purpose of this Committee is to study and recommend to the ESA Board of Directors various possible Scouting projects for the ESA to undertake as annual projects.

The Committee is composed of the immediate six past presidents of the ESA and the President shall appoint its chairman from this group.

An annual recommendation report to the ESA Board of Directors shall be made by the Committee at least 60 days prior to the annual meeting of the ESA in order to give the Board sufficient time to discuss, consider, approve and prepare for presentation of the selected project to the membership at the next annual meeting.

The Committee shall be guided in its recommendations to such projects that are within the scope of the ESA to undertake and that will carry out the purpose of the ESA "to give back to Scouting something that we got out of it."

EAGLE SCOUT ASSOCIATION BOARD OF DIRECTORS - 1959

<u>Term Expires 1959</u>	<u>Term Expires 1960</u>	<u>Term Expires 1961</u>	<u>Ex-Officio</u>
Bill Coffman	Ed Bilhorn	Don Adams	Bill Guthrie
Gene A. Cole	Glen Moller	Sid Ashen-Brenner	Al Gruer
Jack Hoech	Bill Riemann	Tom Kirk	Jack Grossman
Mel Roman	LeRoy Sachs	Ron Smillie	Charlie Bland
Nelson Schneeberger	Bert Tremayne	Ed Spinks	Jerry Steiner
Eric Smith	Mel Treu	Orlie Wilkening	G. Ben Ross

Officers

President - Gene Cole (WO 1-3561)
Vice Pres - Eric Smith (YO 5-8416)
Vice Pres - Ed Spinks (WO 2-4669)
Vice Pres - Orlie Wilkening (WO 2-8298)
Treasurer - Bert Tremayne (TA 2-0565)
Recording
Secretary - Nelson Schneeberger (PA 7-6187)
Membership
Secretary - Ron Smillie (WO 2-9988)
Staff
Advisor - Carl H. Laemmler (CH 1-7856)

Committee Chairmen & Co-Chairmen

Eric Smith - Vice-President

Irondale Weekend - Chairman - Doug Day (WO 2-2911)
Co-Chairman - Jack Harwood (WO 1-4019)
Irondale Reservations - Chairman - Al Gruer (TA 2-1295)
Irondale Teen-Age - Chairman - Glenn Moller (TA 1-8011)
1958 Exposition - Chairman - Ed Bilhorn (WO 2-5531)
Projects Chairman - G. Ben Ross (WY 3-5134)

Orlie Wilkening - Vice-President

Social - Chairman - LeRoy Sachs (WO 2-6677)
Co-Chairman - Mel Hertzman (PA 7-9636)
Publicity - Chairman - Tom Connelly (JE3-1723)
Swimming - Chairman - Lou Heyman (WY 3-5548)
Co-Chairman - John Kaminski (EV 1-9719)
Historian - Chairman - Jack Grossman (WY 1-0948)

Ed Spinks - Vice-President

Membership - Chairman - Charlie Bland (WO 2-5161)
Co-Chairman - Frank Finklang (HA 7-5433)
Co-Chairman - Hal Bamburg (PA 5-4516)
Eagle's Day - Chairman - Harvey Zucker (PA 5-7708)
Co-Chairman - John Schiffman (TA 1-1954)
Advisor - Bill Guthrie (TA 1-4936)
Fire Tower - Chairman - Adolph Peschke (WO 1-3024)
Co-Chairman - John Bland (WO 2-8293)
Policy - G. Ben Ross - Jack Grossman - Al Gruer

ESA PAST PRESIDENTS

Albert Cunliff	1947-48	Al Gruer	1953-54
Art Werder *	1948-49	Jack Grossman	1954-55
Tom Connelly	1949-50	Charles Bland	1955-56
Stuart Senniger	1950-51	Jerry Steiner	1956-57
Bob Phemister	1951-52	G. Ben Ross	1957-58
Bill Guthrie	1952-53		

* Deceased

ST. LOUIS AREA COUNCIL OFFICERS

E. M. Clark.....President

Richard Baldwin.....Vice-President	Morton D. May.....Vice-President
Willard R. Cox.....Vice-President	W. B. McMillan.....Vice-President
Russell L. Dearmont.....Vice-President	Arthur Atkinson.....Treasurer
Louis B. Eckelkamp..... Vice-President	Roy W. Jordan..... Commissioner
Clark Hungerford Vice-President	

EXECUTIVE BOARD MEMBERS-AT-LARGE

Richard H. Amberg	Marion L. J. Lambert	Ethan A. H. Shepley, Jr.
Arthur B. Baer	Albert W. Lantz	E. Ray Siler
Gene A. Cole	D. B. Mabry	Edwin J. Spiegel
Wilbur H. Cramblet	Harry B. Mathews, Jr.	Robert E. Stevenson
Alfred Fleishman	Wm. A. McDonnell	John P. Stupp
Russell E. Gardner, Jr.	John J. Nangle	L. J. Sverdrup
Harry F. Harrington	Chapin S. Newhard	James C. Taylor
Philip J. Hickey	Gregory J. Nooney	Whitelaw T. Terry
Roscoe C. Hobbs	Robert W. Otto	Raymond R. Tucker
James Lee Johnson	Frederic M. Peirce	Clarence M. Turley
Gale F. Johnston	W. R. Persons	Jos. E. Vollmar
Elmer A. Jones	Norfleet Rand	Adalbert von Gontard
Wm. T. Jones, Jr.	Stanley M. Richman	Roy Wenzlick
Aloys P. Kaufmann	Russel L. Savage	Eugene F. Williams, Jr.
Eugene R. Kropp	Harry L. Schaeffer	Howard I. Young

ADVISORY BOARD

August A. Busch, Jr.	Thomas W. Pettus	J. W. Skelly
Carl H. Holekamp	Henry B. Pflager	Erwin P. Stupp
Jacob M. Lashly	J. J. Schlafly	John S. Swift
Sidney Maestre	S. Cupples Scudder	Charles Allen Thomas
J. W. McAfee	Frank M. See	John L. Wilson
E. E. Pershall		David P. Wohl

DISTRICT CHAIRMEN & DISTRICT EXECUTIVES

DISTRICT

Council Grove
Daniel Boone
North Star
Northwest
Frontier
Pioneer

DISTRICT CHAIRMAN

E. G. Werremeyer
J. C. Storment
George A. Speer
R. W. Iverson
David B. Pace
John Torrey Berger

DISTRICT EXECUTIVE

Louis J. Klusak
Charles A. Pearson
Mel Loewenstein
Donald A. Davison
Quinten Adderley
William Duncan

DISTRICT CHAIRMEN & DISTRICT EXECUTIVES (Cont'd)

<u>DISTRICT</u>	<u>DISTRICT CHAIRMAN</u>	<u>DISTRICT EXECUTIVE</u>
Bourbeuse	William J. Kelley	John G. Hudson
Keystone	P. C. Robinson	Martin Graham
Midland	Gaylord C. Burke	Irl Chandler
Old Trails	Fletcher Wells	Ernie Endsworth
West	Sol W. Gross	David Church
Suburban	A. L. Hooper	Donald R. Smith
Arrowhead	William J. Katt	David Carlstrom
Grant	Fred J. Oertli	Charles Pool
Ozark Trails	R. K. Ragland	L. Leonard Pewthers
South	Russell E. McKelvey	Ollie Price
Taum Sauk	Lyman G. Riley	Roy F. Sutherlin
Southwest	Aubrey R. Hamilton	James L. Glover

Russell J. Hart - Scout Executive
Reinhold G. Miller - Deputy Scout Executive & Director of Field Service
Carl H. Laemmler - Ass't Scout Executive & Director, Activities and Relationships

LeRoy Lane - Assistant Scout Executive & Finance Director
Merle D. Shippey - Ass't Scout Executive & Camping Director
Milton S. Weaver - Ass't Scout Executive & Ass't Camping Director
Robert E. Nichols - Director of Exploring

Al Rogers, C. Kenneth Swink, and Arnold Dreyer - Field Directors

ESA ROSTER

ADAMS, DONALD W. (Bette) 1938 Troop 308
12 Matthews Lane, Sunset Hills 23, Mo.
New Departure Div. G.M., 6611 Clayton Rd.
Home - VI 3-4380 Bus. - PA 6-0108
Chairman Troop 40

ADAMS, E. J. "SPARKY" (Joan) 1938 Troop 308
8750 Gayle, Rt. #12, Kirkwood 22, Mo.
International Paper Co., 7901 Michigan
Home - TA 2-0499 Bus. - FL 3-3322

ALDEN, JOHN T. (Betty) 1930 Troop W.G. 2
447 Hampshire, Webster Groves 19, Mo.
Stephens-Davis Co., 600 E. Jackson,
Chicago, Illinois
Home - WO 1-9394

ALPORT, ELIOT M. (Marylyn) 1949 Troop 90
10309 Lawrence Dr., St. Louis 24, Mo.
Alport Construction Co. (Engineer)
706 Chestnut, St. Louis 1, Missouri
Home - HE 2-8037 Bus. - MA 1-1877

APPEL, LOUIS J. (Florence) 1932 Troop 247
Rt. 6, Box 2225, Sappington 23, Mo.
National Lead Co., Titanium Division
Mississippi River & River Des Peres
Home - VI 3-3513 Bus. - FL 3-3980
Troop Committeeman

ARONSON, SY (Judith) 1931 Troop 6,
Mt. Vernon, N.Y.
100 Arundel, Clayton 5, Missouri
Vice-Pres. - Arel Inc., 4916 Shaw Avenue
Home - PA 7-4465 Bus. - PR 3-0600

ASHEN-BRENNER, SIDNEY, JR. (Mary Jane)
1940, Troop 2
949 East Essex, Glendale 22, Mo.
Photographer, Industrial Portrait,
4054 Lindell, (8)
Home - TA 2-2329 Bus. - JE 1-0700
Pack Committeeman, Pack 360

AUSTIN, FRANCIS S. (Bertha) 1957 Troop 324
436 E. Essex, Kirkwood 22, Missouri
Missouri Inspection Bureau, 1400 Pierce
Building
Home - TA 1-7163 Bus. - MA 1-0380
Troop Committeeman, Troop 324

AUSTIN, MARTIN G. (Beverly) 1938 Troop 30
Sunnyside, Washington
1028 Bompert, Webster Groves 19, Mo.
M.D., 607 N. Grand, Suite 937
Home - WO 1-2466 Bus. - JE 1-1750

BAER, SIDNEY R., JR. 1933 Troop 186
21 Fordyce Lane, Ladue 24, Missouri
Stix, Baer & Fuller Company
Bus. - CE 1-6500, Ext. 448

BAMBURG, HAROLD B. (Judy) 1939 Troop ?
Kirksville, Mo.
7028 Waterman Avenue, St. Louis 5, Mo.
Lawyer, Nouss, Bamburg and Gaebe
7330 Carondelet, Clayton 5, Mo.
Home - PA 5-4516 Bus. - PA 6-5300

BARRETT, LESTER E. 1922 Troop 46
8052 Venetian Drive, Clayton 5, Mo.
Barrett Electric Supply Co., 2936 Locust
Home - PA 1-1237 Bus. - JE 3-8800

BAUMAN, CARL S. (Claranne) 1924 Troop 90
7244 Stanford Avenue, University City 5
Hamilton-Schmidt Surgical Co.,
3456 Lindell Blvd.
Home - PA 7-1617 Bus. - JE 1-3222
Neighborhood Commissioner

BECKETT, FOREST B. (Letha) 1951 Troop 522
Wichita, Kansas
4462 Wilcox Avenue, St. Louis 16, Mo.
Interstate Commerce Commission
Home - PL 2-0340 Bus. - MA 1-8100, 509

BERGER, JOSEPH II (Elaine) 1941 Troop 90
51 Briarcliff, Ladue 24, Missouri
United Lumber Co., 1401 So. Hanley Rd.
Home - WY 3-2086 Bus. - ST 1-0430

BERTSCH, HUGH 1939 Troop 7, Cambridge,
Mass.
5560 Pershing Avenue, St. Louis 12
Mallinckrodt Chemicals, Research Chemist
3600 N. Second Street, St. Louis 7
Home - VO 3-6847 Bus. - GA 1-9353
Assistant Scoutmaster, Troop 98

BIERMAN, LAWRENCE (Jeanne) 1945 Troop 90
615 Forest Court, Clayton, Missouri
Bee Hat Company, 1021 Washington
Home - PA 1-3361 Bus. - CE 1-6631

BILHORN, EDWARD W. (Beth) 1933 Troop 1
Elkhorn, Wis.
28 Southridge Drive, Glendale 22, Mo.
Ozark Forest Products, Inc., 9827 Clayton
Home - WO 2-5531 Bus. - PA 7-7777
Committeeman, Pack and Troop 360

BIRCKHEAD, ROY (Lavern) 1932 Troop 92
3704 Manola, Pine Lawn 20, Missouri
Bradley Specialized Service, 4023 Easton
Home - EV 2-6942 Bus. - JE 5-4900

BLAES, RENE J. (Nell) 1941 Troop 315
412 Newport, Webster Groves 19, Mo.
Internal Revenue Service, Federal Bldg.
Home - WO 2-1087 Bus. - MA 1-8100, 742

BLAND, CHARLES H. (Betty) 1936 Troop 41
217 Spencer Rd., Webster Groves 19, Mo.
Bland & Company Insurance, 319 N. 4th St.
Home - WO 2-5161 Bus. - CE 1-3550
St. Louis Area Council Camping Committee

BLAND, JOHN W. (Ruth) Troop 334
#4 Windsor Lane, Kirkwood 22, Missouri
Consulting Engineer, 319 No. 4th St. (1)
Home - YO 5-8676 Bus. - CE 1-6429
Cubmaster, Pack 325

BLANKE, WILLIAM H. (June) Troop 23
4200 Bates Street, St. Louis 16, Mo.
General Refrigeration Co., 4025 Forest Park
Home - HU 1-8595 Bus. - FR 1-7056

BOETHELT, ROY W. (Dorothea) 1935 Troop 209
2818a Meramec Street, St. Louis 18, Mo.
Waddell & Reed, Inc., 5427 Gravois
Home - FL 3-1445 Bus. - HU 1-0700
Merit Badge Counselor

BORGWALD, KENNETH J. (Marie) 1925 Troop 86
303 North Van Buren, Kirkwood 22, Mo.
Dentist, 3102 So. Grand
Home - TA 1-7141 Bus. - PR 3-7077

BOYD, EDWARD J. (Virginia) 1947 Ex.Post 5
3420 Oakdale, Pine Lawn 20, Mo.
Newspaper Pressman, 1133 Franklin Avenue
Home - EV 2-3401 Bus. - GA 1-1212
Committeeman, Troop 5 & Merit Badge Con'slr

BRENNECKE, ROBERT A. (Emerine) 1924 Troop 27
3459 Alberta, St. Louis 18, Mo.
Brennecke Shoes, 9426 Gravois
Home - PR 1-0044 Bus. - FL 3-4345

BRERETON, JOHN A. (Margaret) 1935 Troop 3
719 Sherwood Drive, Webster Groves 19, Mo.
Consolidated Chem. Lab., 1470 Vandeventer
Home - WO 1-6648 Bus. - JE 1-7282
Vice Chairman - Camping Committee

BRIGHAM, RAYMOND H. (Bee) 1926 Troop 52
17 Pen Haven Drive, Pensacola, Florida
Gator (Beer) Distributor, "

BROCKMAN, ELLIS 1947 Troop 362
7037 Dale, St. Louis 17, Mo.
Washington University, St. Louis 5, Mo.
Home - MI 7-2735

BUCHRUCKER, ROBERT (Georgia) 1929 Troop 39
5861 Hampton Avenue, St. Louis 9, Mo.
U.S. Post Office, 1720 Market
Home - FL 3-8566
Neighborhood Commissioner

BULLOCK, ROBERT (Kathleen) 1933 Troop 46
4149 Cleveland, St. Louis 10, Mo.
Acme Visible Records, Inc., 1708 Olive
Home - PR 3-1020 Bus. - CE 1-7411
Neighborhood Commissioner, Committee-
man, Pack & Troop 77

BURROWS, JOHN (Mary Dell) 1943 Troop 229
2346 Berwyn Drive, St. Louis 21, Mo.
McDonnell Aircraft
Home - UN 7-8883 Bus. - PE 1-2121, 3598

BABB, ROY C. (Margaret) 1936 Troop 11,
Blue Ridge, Greenville, S.C.
623 Norfolk Drive, Kirkwood 22, Mo.
Regional Manager, Zonolite Company,
1705 Sulphur Avenue, St. Louis 10, Mo.
Home - TA 1-1337 Bus. - MI 5-8786

BUSCH, EDGAR T. (Laverda) 1935 Troop 209
9440 Arban Drive, Crestwood 26, Mo.
Greenleaf Mfg. Co., 111 S. Bemiston
Home - VI 3-2668 Bus. - VO 1-6258

CAPPS, GEORGE H. (Helen) 1931 Troop 102
17 Frontenac, St. Louis 24, Mo.
Pres., Capitol Coal & Coke Company,
8251 Maryland
Home - HE 2-8362 Bus. - PA 5-8207
Merit Badge Counselor

CARTER, WILLIAM R. (Erin) 1927 Troop 7
Memphis, Tennessee
928 Lebon Drive, St. Louis County 37
Fisher Body Division, 3809 N. Union
Home - UN 7-0489 Bus. - EV 5-6500
Committeeman, Troop 374

CASEY, JAMES H. 1954 Troop 98
6245 Waterman, St. Louis 5, Missouri
Home - PA 7-2224
Scoutmaster, Troop 98

CASSILLY, EDWARD J., JR. (Frances) 1932
Troop 308
1231 So. Geyer Road, St. Louis 22, Mo.
Builder-Real Estate, 534 S. Elm Ave. (19)
Bus. - WO 1-6715

CASSILLY, WILLIAM S. (Anita Louise) 1935
Troop 308
445 North Berry, Glendale, Missouri
Real Estate, 534 S. Elm, (19)
Home - WO 2-5582 Bus. - WO 1-6715
Assistant Cubmaster

CHASE, HAROLD J.L. (Dorothy) 1923 Troop 4
Peoria, Illinois
3620 St. Sebastian Lane, St. Ann, Mo.
Aeronautical Chart & Information Center,
Second & Arsenal
Home - HA 8-0055

CHURCH, DAVID L. (Ruby) 1946 Troop 297
8504 Oak, St. Louis 21, Mo.
Boy Scouts of America, 505 Arcade Bldg.
Home - JA 2-3245 Bus. - CH 1-7856
District Scout Executive, West District

COFFMAN, WILLIAM (Natalie) 1933 Troop 14
529 Lilac, Webster Groves 19, Missouri
Golden Dipt Mfg. Co., Milstadt, Illinois
Home - WO 2-0544 Bus. - JE 5-3940
Troop Committeeman, Troop 304

COLE, GENE A. (June) 1941 Troop 261
418 Spring Avenue, Webster Groves 19, Mo.
Continental Assurance, 320 N. Broadway
Home - WO 1-3561 Bus. - CH 1-8228
Troop Committee Chairman, Troop 31

CONNELLY, TOM J. (Margaret) 1932 Troop 177
Rivermont Ranch, House Springs, Missouri
Krupnick & Associates, Inc., 508 N. Grand
Home - Essex 5-3278 Bus. - JE 3-1723
Vice-Chairman, Camping Committee - Eagle
Board of Review

COOK, JAS. F., JR. (Ruth) 1924 Troop W.G. 1
45 Mason Avenue, Webster Groves 19, Mo.
President, Isaac Cook Co., 1818 Arcade Bldg.
Home - WO 2-1466 Bus. - MA 1-4570

CUNLIFF, ALBERT E. (Elizabeth) 1920 Troop 60
215 Oakwood, Webster Groves 19, Mo.
Attorney at Law, Luke, Cunliff, & Wilson,
706 Chestnut Street (1)
Home - WO 1-3384 Bus. - CE 1-7130
Advancement Committee

CURTIS, GLION, JR. (Mary Ellen) 1928
Troop W. G. 14
c/o American Embassy, Managua,
Nicaragua
Foreign Service Officer,
Dept. of State, Washington, D.C.

CURTIS, THOMAS B. (Susan) 1926 Troop 304
462 Florence Ave., Webster Groves 19
Lawyer & Congressman, Washington 25, D.C.
St. Louis Phone - PA 5-8788

DALE, JOHN T. (Naomi) 1937 Troop 308
1032 Etherton Drive, Webster Groves 19
Engr., McDonnell Aircraft
Home - WO 2-4997 Bus. - PE 1-2121, 2117

DAVIS, HARRY E. (Kathleen) 1936 Troop 2
430 Algonquin Place, Webster Groves 19
Consultant
Home - WO 2-7715
Troop Committeeman, Troop 301

DAVISON, DON (Dottie) 1939 Troop 212
Crete, Nebraska
324 Atalanta, Webster Groves 19, Mo.
Boy Scouts of America, 505 Arcade Bldg.
Home - WO 2-2383 Bus. - CH 1-7856
District Scout Executive, Northwest Dist.

DAY, H. DOUGLAS (Kay) 1932 Troop 19
Cincinnati, Ohio
270 Blackmer Place, Webster Groves 19
Nat'l. Adv. Mgr., St. Louis Post-Dispatch
Home - WO 2-2911 Bus. - MA 1-1111

DEGROOTE, STANLEY (Lynn) 1940 Troop 90
7415 Wellington Way, Clayton 5, Mo.
Ass't. to Vice-President, G.H. Packwood
Mfg. Co., 1545 Tower Grove
Home - VO 3-2163 Bus. - PR 3-2626

DILLING, KENNETH (Frances) 1953 Troop 64
Route 3, Box 287, Florissant, Missouri
Home Improvement Center, 7120 Florissant
Home - UN 4-7836 Bus. - EV 1-0162

DOERBAUM, LLOYD A. 1953 Troop 362
10228 Thornwood Drive, Ladue 24, Mo.
United States Marine Corps

DOLAND, ROBERT (Frances) 1935 Troop 1
1418 Pine Valley Rd., Little Rock, Ark.
Olin Mathieson Chem. Corp., P.O.Box 991,
Little Rock, Arkansas
Bus. - FR 6-2471

HEITERT, GILBERT L. (Virginia) 1932 Troop W.G. 14
 403 Springcreek Drive, Webster Groves 19
 Lumber Engineering & Sales Company,
 403 Springcreek Drive, Webster Groves
 Home - WO 1-6109 Bus. - WO 1-6109

HELLWEGE, J. PHILIP (Shirley) 1949 Troop 34
 5733 Delor Street, St. Louis 9, Mo.
 Straub Foods, Office Manager, 8282 Forsyth
 Home - HU 1-0264 Bus. - PA 2-2121
 Assistant Post Advisor, Post 34

HELMREICH, L. WALTER (Margaret) 1931 Troop 5, Jefferson City
 630 W. Main Street, New Haven, Indiana
 I.T.T. Federal, Fort Wayne, Indiana

HERTZMAN, MELVIN (Zelda) 1927 Troop 30
 5903 DeGiverville, St. Louis 12, Mo.
 Lawyer, 506 Olive, Room 1002
 Home - PA 7-9636 Bus. - CH 1-7321
 Troop Committeeman

HEYMAN, LOUIS (Maxine) 1943 Troop 21
 16 Crosswinds, St. Louis 24, Mo.
 Bertha Hat Company, 410 N. Jefferson
 Home - WY 3-5548 Bus. - CE 1-7072
 Assistant District Commissioner

HOECH, JOHN (Elizabeth) 1939 Troop 348
 3587 San Jose Lane, St. Ann, Missouri
 McDonnell Aircraft
 Home - HA 7-1274 Bus. - PE 1-2121

HOLMES, JAMES (Mary) 1952 Troop 317
 7231a Anna Avenue, Maplewood 17, Mo.
 Southwestern Bell Telephone Company,
 6214 Delmar Blvd.
 Home - MI 7-1253 Bus. - PA 1-9846
 Committeeman, Troop 334

HOPPER, EDWARD (Sylvia) 1927 Troop 30
 7536 Byron, Clayton 5, Missouri
 Hopper Furs, Inc., 1213 Washington
 Home - PA 7-5393 Bus. - CE 1-1631
 Troop Committee Chairman

HOROWITZ, TED (Joan) 1935 Troop 30
 9742 Mansfield Ct., Olivette 24, Mo.
 Secretary-Treasurer, Atlas Realty Co.
 1611 Hodiament Avenue, St. Louis 12, Mo.
 Home - WY 3-5051 Bus. - EV 3-3819
 Committee Chairman, Sea Scout Ship 90

HOUSMAN, RONALD G. 1952 Troop 127
 7000 Corbit, University City 14, Mo.
 Air Force
 Home - PA 1-7395

HOWARD, R. E. (Marie) 1933 Troop 1
 Effingham, Illinois
 9110 White Avenue, St. Louis 17, Mo.
 Ass't. Director Research, Monsanto
 Chemical, St. Louis 4, Missouri
 Home - WO 2-6687 Bus. - MA 1-4000
 Committeeman, Troop & Post 339

HUBBELL, M. FRED (Marjorie) 1958 Troop 300
 216 Selma, Webster Groves 19, Mo.
 Engineer
 Home - WO 1-2661

HULSE, JOHN W. (Rose) 1952 Troop 301
 230 Innisfail Drive, Webster Groves 19
 Hunter Packing Co., 1214 No. Second,
 East St. Louis, Illinois
 Home - WO 1-5319 Bus. - MA 1-7377
 Vice-Chairman, Suburban District

HUTCHESON, ROBERT J. (Marie) 1936 Troop 133
 6606 Odell Avenue, St. Louis 9, Mo.
 The Motor Market, Inc., 1702 Lucas Hunt
 Home - MI 5-3357 Bus. - EV 5-1702
 Merit Badge Counselor

INGHAM, JAMES (Joan) 1931 Troop 198
 310 S. Elm, Webster Groves 19, Mo.
 C.P.A., 7 No. Brentwood, Clayton 5
 Home - WO 1-7521 Bus. - PA 1-2082

JACKSON, MERLE M. 1952 Troop 303
 4153 Clayton Avenue, St. Louis 10
 Magnus Metal Div., National Lead Co.,
 4153 Clayton Avenue, St. Louis 10
 Bus. - FR 1-4030

JACOBS, STEPHEN L. 1951 Post 78
 Indianapolis, Ind.
 5636 Washington Blvd., Indianapolis
 Success Printing & Litho Company,
 Indianapolis, Indiana, 215 N. Senate
 Home - CH 5-8417 Bus. - ME 4-8371

JONES, AUGUSTIN, M.D. (Lucille) 1923 Troop 60
 9707 Conway Road, St. Louis 24, Mo.
 Physician, 634 No. Grand Avenue
 Home - WY 3-1485 Bus. - JE 3-1676

JONES, DOUGLAS H.G. (Mary) 1928 Troop 2
 528 Olive Court, Webster Groves 19
 Judge, Circuit Court
 Home - WO 2-7017 Bus. - VO 2-6260

JONES, JAMES (Gloria) 1945 Troop 41
 7025 Arcadia, St. Louis 14, Mo.
 Wagner Electric Corp., 6400 Plymouth
 Home - PA 5-8775 Bus. - PA 1-5000, 712
 Merit Badge Counselor

JONES, JOHN L. 1950 Troop 41
6740 Crest, University City 14, Mo.
Industrial Arts Inst., 2400 Sutton
Home - PA 7-8391 Bus. - MI 5-8939

JONES, WILLIAM E. (Francis) 1940 Troop 329
1018 Curran, Kirkwood 22, Missouri
Wireman, Gamp Electric
Home - TA 1-6754
Neighborhood Commissioner

JONES, WM. T., JR. (Virginia) 1925 Troop 60
48 Aberdeen Place, Clayton 5, Mo.
Markham & Company, 506 Olive Street
Home - PA 5-3399 Bus. - CE 1-0100
Member, Executive Board

KALBFLEISH, EDWIN, JR. (Mary Ann) 1934
Troop 98
1713 No. Ballas Road, St. Louis 22, Mo.
Prentice-Hall, Inc.
Home - YO 5-0342

KAMINSKI, JOHN P. (Myrtle) 1933 Troop 147
6712 St. Louis Avenue, St. Louis 20, Mo.
Optician, Erker Optical Company,
518 No. Grand Blvd.
Home - EV 1-9719 Bus. - JE 3-5292
Cubmaster, Merit Badge Counselor

KEEFER, IRWIN C. (Lucy) 1928 Troop 101
2269 S. Warson, St. Louis 17, Mo.
Chromcraft Corp., 4321 Semple
Home - WY 3-3033 Bus. - EV 2-5590

KINSLEY, RICHARD N., JR. 1946 Troop 84
Philadelphia, Pa.
3527 Shel mire, Philadelphia, Pa.
Department of Biological Science,
Purdue University, Lafayette, Indiana
Troop Committeeman, Philadelphia, Pa.

KIRK, THOMAS W. (Vivian) 1930 Ship #8
#1 Kirthom Lane, Webster Groves 19, Mo.
Kirk Construction Co., #1 Kirthom Lane
Home - WO 2-6646 Bus. - WO 1-2060
Troop Committeeman

KLETZKER, TOM P. (Betsy) 1935 Troop 41
#3 Berkshire, Richmond Heights 17, Mo.
Central Engraving Co., 114 No. 7th St.
Home - WY 2-0600 Bus. - GA 1-4436

KNIGHT, HAL, JR. (Nan) 1936 Troop 301
215 Park Road, Webster Groves 19, Mo.
W. B. Knight Machinery Co., 3920 W. Pine
Home - WO 2-0078 Bus. - FR 1-0840

KNOESEL, ERWIN (Celeste) 1927 Troop 180
23 Devon Road, Glendale 22, Mo.
Architect, 111 W. Lockwood Ave. (19)
Home - WO 1-3231 Bus. - WO 1-8008
Health and Safety Committee

KOHN, NATHAN, JR. (Catherine)
1934 So. Signal Hill Drive, Kirkwood 22
Nathan Kohn, Jr. & Associates,
101 So. Meramec
Home - YO 5-1613 Bus. - PA 7-7777

KURTH, GUENTHER (Diana) 1934 Troop 6
327 Central Place, Kirkwood 22, Mo.
Method Analyst, Union Electric Co.,
12th and Olive, St. Louis 1, Mo.
Home - TA 1-5341 Bus. - MA 1-3222, 2507

LaMERTHA, ERNEST E. (Marguerite) 1941
Ship 11
R.F.D. #1, Box 703, Ballwin, Missouri
LaMertha's Dairy Mart, Ballwin, Mo.
Home - LA 7-3372
Assistant District Commissioner

LANDER, AARON (Lorraine) 1935 Troop 30
1050 Groby Road, University City 24
Lander Bookbinding Corp, 21 So. 9th St.
Home - PA 1-5112 Bus. - MA 1-3140

LANG, DONALD E. (Shirley) 1944 Troop 430
Maxville, Mo.
4446 Mohegan Drive, Lemay 23, Mo.
Graybar Electric, 600 S. Taylor
Home - PL 2-5461 Bus. - JE 1-4700
Skipper, Ship 352

LANGENBERG, F. G. (Catherine) 1927
Troop 2
6608 Pershing, St. Louis 5, Mo.
Derf Products, Owner
707 Market, St. Louis 1, Missouri
Home - PA 1-7685 Bus. - CH 1-6369
Troop Committeeman, Troop 49

LEE, CHARLES A., JR. (Betty) 1933
Troop 1, Jefferson City
225 Edwin Avenue, Glendale 22, Mo.
Attorney, 915 Olive Street (1)
Home - YO 6-4633 Bus. - CH 1-5128

LEUTWILLER, LESTER (Louise) 1922
Troop 6, Urbana, Illinois
16 Overbrook Drive, Ladue 17, Mo.
Pet Milk Company
Home - WO 1-8295 Bus. - MA 1-5400

SACHS, LEROY (Sylvia) 1934 Troop 30
2011 Urban Drive, Brentwood 17, Mo.
Teacher, Cahokia High School
Home - WO 2-6677 Bus. - BRidge 1-0743
Scoutmaster, Merit Badge Counselor

SIMPKINS, RONALD (Joan) 1955 Troop 121
1827a Marconi, St. Louis 10, Mo.
A.C.I.C., 2nd and Arsenal
Home - PR 3-4722

SKELLY, COL. FRANK (Helen) 1921 Troop 38
310 Russell Blvd., Columbia, Missouri
U.S. Army, Retired
Home - GI 2-5630

SKELLY, JAMES G. 1949 Troop 66
Fort Leavenworth, Kan.
310 Russell Blvd., Columbia, Missouri
Student, University of Missouri
Home - GI 2-5630

SMILLIE, RONALD (Jeanne) 1940 Troop 90
Indianapolis, Indiana
431 California Street, Webster Groves 19
Krupnick and Assoc., Account Executive,
508 No. Grand Avenue (3)
Home - WO 2-9988 Bus. - JE 3-1723

SMITH, CHARLES (Eugenia) 1931 Troop 232
662 Fairview Avenue, Webster Groves 19
Partner, Heitz Machine & Mfg. Co.,
1926 S. 18th Street
Home - WO 2-6956 Bus. - PR 3-3515

SMITH, ERIC, JR. (Mickey) 1930 Troop W.G. 7
380 No. Sappington, Glendale 22, Mo.
Architect, Washington University
Home - YO 5-8416 Bus. - VO 3-3767
Chairman, Troop Committee, Eagle Board
of Review

SOPHIR, JACK (Dorothy) 1945 Troop 102
9120 Meyer Lane, Crestwood 23, Mo.
Home - VI 3-2908
District Committee, Midland District

SPECTOR, JEROME (Marion) 1929 Troop 87
RR #3 Spoede Road, Creve Coeur, Mo.
Universal Match Corp, Box 191, Ferguson 21
Home - HE 2-8413 Bus. - JA 2-1620

SPINKS, EDWARD (Mary) 1936 Troop 318
9835 Hudson, Rock Hill 19, Missouri
Union Electric, 18th and Gratiot
Home - WO 2-4669 Bus. - MA 1-3222, 2676
Pack Committeeman

SPRATT, JOHN, JR. (Beverly) 1945
Troop 9, Dallas, Texas
41 Faculty Lane, Clayton 5, Mo.
Physician, Barnes Hospital
Home - VO 3-8307 Bus. - FO 7-6400, 285

SPURR, RAY (June) 1939 Troop 147
4319 Nelson Drive, Northwoods 20, Mo.
Mallinkredt Chemical, Box 472,
St. Charles, Missouri
Home - EV 5-9663 Bus. - WY 3-9400
Committeeman

STEELE, DONALD (Nancy) 1945 Troop 90
925 Floradale, Olivette 24, Mo.
Stockbroker, Semple Jacobs, Co., Inc.
711 St. Charles Avenue
Home - WY 3-3514 Bus. - MA 1-0634

STEINER, CHESTER (Claire) 1938 Troop 90
6220 Rosebury, St. Louis 5, Mo.
Emmer Realty Co., 705 Chestnut St.
Home - PA 5-9444 Bus. - MA 1-8444
Chairman, Troop Committee, Merit Badge
Counselor

STEINER, HARRY, JR. (Henrietta) 1937
Troop 90
7391 Norwood, University City 5, Mo.
Stix, Baer & Fuller, 601 Washington
Home - PA 1-0392 Bus. - CE 1-6500
Ass't Cubmaster, Troop Committeeman

STEINER, JEROME (Marjorie) 1922 Troop 54
35 Hillvale Drive, Clayton 5, Mo.
Attorney, 8003 Forsyth, Clayton, Mo.
Home - PA 1-3344 Bus. - PA 1-1542
Merit Badge Counselor

STEPHENS, W.J., JR. (Nancy) 1935 Troop 168
3850 Lake Avenue, Wilmette, Illinois

STILES, ERVIN (Carolyn) 1957 Troop 317
2437 Pocahontas, Rock Hill 17, Mo.
Cupples Products Corp., 2650 S. Hanley
Home - WO 2-4697 Bus. - ST 1-6729

STILL, PALMER (Lois) 1931 Troop 71
9415 Old Bonhomme Road, Clayton 24, Mo.
Manufacturer's Agent, 9415 Old Bonhomme
Home - WY 3-2077 Bus. - WY 3-2077
Troop Committeeman, Troop 663

SUFFIAN, MILTON (Harriett) 1941 Troop 119
1851 Engelholm, Pagedale 21, Mo.
Attorney at Law, Suite 601, 722 Chestnut
Home - VO 3-3774 Bus. - CE 1-2020

THEIN, KEN 1935 Troop 106
2 Wrenwood Court, Webster Groves 19, Mo.
Ken Thein Signs, 535 Flora
Home - WO 2-5527 Bus. - WO 1-2610

TODD, JOSEPHUS, JR. (Dorothy) 1935
Troop W.G. 7
#8 Cedar Crest, Ladue 24, Mo.
President, Warner & Todd, Inc.,
8029 Clayton Rd.
Home - WY 3-5873 Bus. - PA 5-8892
Troop Committeeman

TREFTS, WILLIAM (Janet) 1935 Troop 180
410 County Hills Drive, Rock Hill 19
Sodemann Heat & Power Co., 1737 Macklind
Home - WO 1-8699 Bus. - PR 6-3535

TREMAYNE, BERTRAM, JR. (Frances) 1931
Troop W.G. 8
224 Parkland, Glendale 22, Mo.
Attorney, Tremayne, Joaquin & Lay Attys.
Shell Building, 212 S. Central
Home - TA 2-0565 Bus. - VO 3-5737
Troop Committeeman, Merit Badge Counselor

TREU, MELVIN (Nancy) 1945 Troop 33
1235 Roxton Drive, St. Louis County 37
McDonnell Aircraft Corporation
Home - UN 7-2500 Bus. - PE 1-2121, 3613

UTHOFF, AUGUST F. (Sue) 1938 Troop W.G. 14
122 St. George's Place, Webster Groves 19
Coordinator & Instructor, 5101 Northrup
Home - WO 1-1281 Bus. - PR 6-2215
Scoutmaster

VOLLMAR, JOSEPH, JR. (Helen) 1935 Troop 153
10 Fair Oakes, Ladue 17, Missouri
Vollmar Bros. Const. Co., Foot of Victor
Street
Home - WY 1-6717 Bus. - TO 5-0400

VOLLMAR, LEWIS C. (Olive) 1940 Troop 153
6995 Washington Ave., University City 5
Vollmar Bros. Const. Co., Foot of Victor
Street
Home - PA 1-3569 Bus. - TO 5-0400

WAGNER, BERNARD (Christine) 1939 Troop 41
20 Black Oak Drive, Box 2439A, Route #6,
Sappington 23, Missouri
Civil Engr., General Contractor,
425 DeBaliviere, St. Louis 12, Mo.
Home - VI 3-1051 Bus. - VO 3-1418

WALZ, H. FREDERICK (Eleanor) 1938
Troop 68
229 McDonald Place, Webster Groves 19
Alpha Tank & Sheet Metal Mfg. Co.,
5001 So. 38th Street
Home - WO 1-4858 Bus. - HU 1-6790

WARD, LEWIS M. 1932 Troop 2
St. Joseph, Mo.
83 Fortune Lane, Kirkwood 22, Mo.
S.W. Bell Telephone, 1010 Pine St.
Home - YO 5-0313 Bus. - CH 1-9800, 2278

WASHAUER, LOUIS H. (Jan) 1943 Troop 90
800 Kingsland Ave., U. City 5, Mo.
Dow Chemical, Madison, Illinois
Home - PA 1-0326 Bus. - GL 2-5190

WEIL, HENRY (Clarice) 1922 Troop King
Scout, Toronto, Canada
806 Audubon Drive, Clayton 5, Mo.
Insurance Broker, 418 Olive Street
Home - PA 5-3351 Bus. - MA 1-0091

WERNER, MORTON T. 1940 Troop 90
7553 Parkdale, Clayton 5, Missouri
Ass't. to Sales Director, Sayman
Products, 2101 Locust
Home - PA 1-4779 Bus. - CE 1-3650
Assistant Cubmaster

WHEATCROFT, DAN (Virginia) 1947
Denver, Colorado
Boy Scouts of America, 314 14th St.
Denver, Colorado
Assistant Scout Executive

WHITE, VERNE (Ruth) 1932 Troop 1
203 Chestnut, Webster Groves 19, Mo.
Ass't. Director Sup. Training,
Frisco Railroad, 906 Olive Street (1)
Home - WO 2-2691 Bus. - CH 1-7800, 316

WIEDERSHINE, L.J. (Evelyn) 1935 Troop 189
10239 Thornwood, St. Louis 24, Mo.
Physician, 634 N. Grand Blvd. (3)
Home - WY 3-6669 Bus. - JE 1-5468

WIESLER, PAUL (Carol) 1943 Troop 6
Agency Supervisor, Aetna Life,
Peoria, Illinois

WILKENING, ORLIE 1928 Troop 88
231 Kerruish Place, Webster Groves 19
Director, Alumni Fund, Washington U.
Home - WO 2-8298 Bus. - PA 7-4700, 533
Institutional Representative, Tr. 308

WILLERTON, JAMES (Elizabeth) 1940 Troop 35
371 Cameron Road, St. Louis 15, Mo.
Truck Merchandising Mgr., St. Louis Ford
Sales District, Ford Motor Co.,
Robertson, Missouri
Home - UN 7-5533 Bus. - PE 1-1300

WINDHORST, WILLIAM (Myrtle) 1924 Troop 52
8831 Northcrest Lane, St. Louis 21, Mo.
Certified Public Accountant, 721 Olive St.
Home - EV 5-9518 Bus. - CE 1-9534
Eagle Board of Review & Presentor

WINNEY, W. OLIVER (Dorothy) 1931 Troop 178
1810 Keller Road, Rt. #8, Mehlville 23
Pevely Dairy Company, 1001 S. Grand Blvd.
Home - VI 3-4614 Bus. - PR 1-4400

WOLF, ROBERT V. 1944 Troop 18
807a N. Rolla Street, Rolla, Missouri
Assoc. Prof. Metallurgy Dept., Missouri
School of Mines, Rolla, Missouri
Home - EMerson 4-2771 Bus. - EM 4-2454

WOODNEY, NILES N. 1955 Troop 77
256 S. Brentwood, St. Louis 5, Mo.
Kennard Corporation, 1270 N. Price
Home - PA 1-3483 Bus. - WY 3-5880

WRIGHT, JAMES A. (Eleanor) 1951 Troop 300
550 Lee Avenue, Webster Groves 19, Mo.
White Rogers Co., 1209 Cass, St. Louis 6
Home - WO 2-7527 Bus. - CE 6-2200

WYNER, EUGENE H. (Toni) 1949 Troop 90
800 LePere Avenue, St. Louis 24, Mo.
Eli Lilly & Co., Sales Rep., 3615 Olive
Home - WY 1-0228 Bus. - PL 2-0311
Neighborhood Commissioner

ZELL, CLIFFORD, JR. (Ginger) 1939 Tr. 343
1111 So. Warson Road, St. Louis 24, Mo.
Sales, Valhalla Chapel, 7600 St. Charles
Rock Road, St. Louis 14, Missouri
Home - WY 3-5409 Bus. - PA 1-4900
Cubmaster, Pack 489

ZEKIND, HARRY (Thelma) 1918 Troop 1
St. Joseph, Michigan
1424 Trelane, Crestwood 19, Mo.
J. Harry Veatch & Assoc., 418 Olive St.
Home - WO 1-7795 Bus. - CE 1-3931

ZUCKER, HARVEY (Ruth) 1958 Troop 87
6330 Northwood, St. Louis 5, Mo.
Hurst-Zucker Neckwear Co., 1307 Washington
Home - PA 5-7708 Bus. - GA 1-3579
Scoutmaster

ADDED SINCE LIST WAS COMPLETED

GLAZIER, SAMUEL (Betty) 1959 Troop 87
5719 DeGiverville Ave., St. Louis 12
Sales, Crown Machinery Co.,
2323 No. 9th Street, St. Louis 6, Mo.
Home - VO 3-4431 Bus. - CE 1-1313
Troop 87, Assistant Scoutmaster
Post 87, Assistant Advisor

HENRY, CHARLES (Helen) 1938
Berks County, Pa.
7114 Kingsbury, University City 30
City Manager, University City, Mo.
Home - PA 1-4713

HOFFMANN, PAUL (Mary) 1956 Troop 457
415 Claybrook, Kirkwood 22, Mo.
President of Manufacturing Firm (?)
1450 S. Vandeventer, St. Louis 10
Home - YO 6-4980 Bus. - OL 2-4511
Troop 457, Assistant Scoutmaster

LaBOYTEAUX, RICHARD L. 1953 Troop 457
1012 No. Taylor, Kirkwood 22, Mo.
Vice-Pres., Insurance Agency,
9641 Manchester, Rock Hill 19, Mo.
Home - TA 1-6770 Bus. - WO 1-1000
Troop 457, Scoutmaster

McCLURE, C.F., JR. (Peggy) 1946 Troop 41
20 Enfield Road, St. Louis County 20
Business Manager, Mendenhall Motors
2231 Washington, St. Louis 3, Mo.
Home - WY 3-5661 Bus. - CE 1-8200

SCHAUMBERGER, RICHARD, SR. (Rose)
1959 Troop 244
1830 S. Florissant Rd., Florissant, Mo.
Tool and Die Maker, Ehrhardt Tool,
914 Monroe, St. Louis, Missouri
Home - JA 2-1608
Neighborhood Commissioner